



**CAMBRIDGESHIRE  
& PETERBOROUGH**  
COMBINED AUTHORITY

**JAMES PALMER**  
CAMBRIDGESHIRE &  
PETERBOROUGH MAYOR

Appendix 4

# **A10 Strategic Outline Business Case (SOBC) Junctions and Dualling**

**Business Board Meeting**

**26<sup>th</sup> May 2020**

**Robert Jones, CPCA Transport Programme  
Manager**



- Scope of Project
- Opportunities
- Scheme Objectives

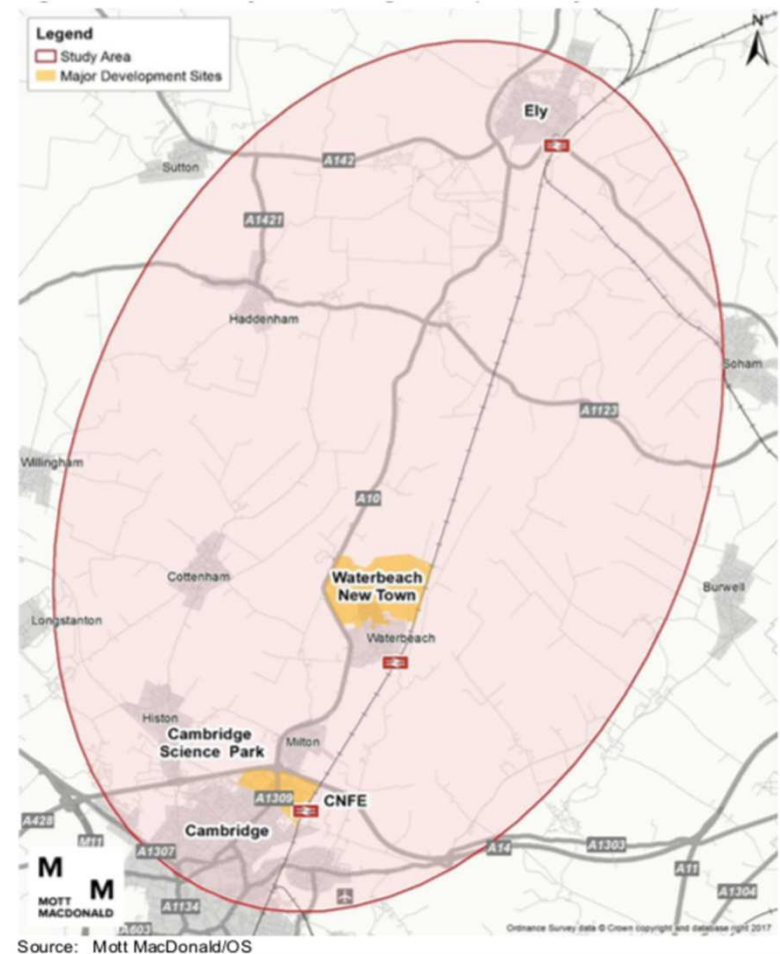


**CAMBRIDGESHIRE  
& PETERBOROUGH**  
COMBINED AUTHORITY

**JAMES PALMER**  
CAMBRIDGESHIRE &  
PETERBOROUGH MAYOR

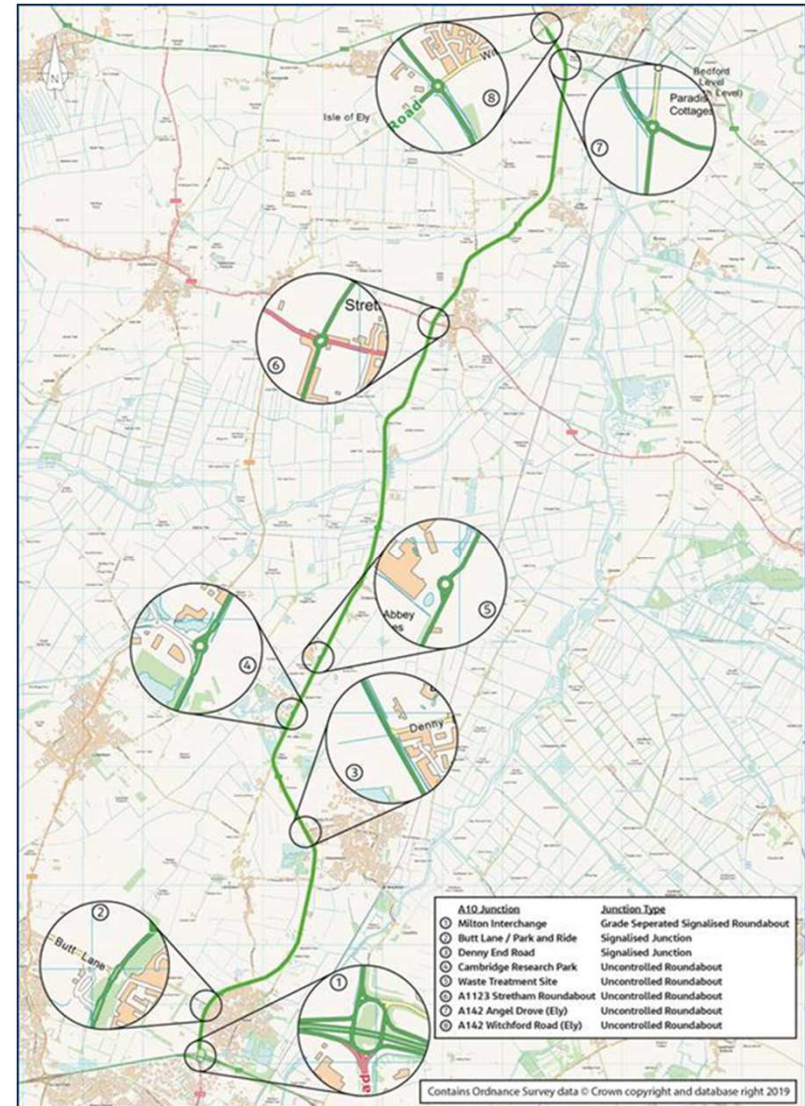
# Scope of Project

- Previous study involved looking at the A10 Corridor between Cambridge to Ely (highlighted in red). It concluded that there was a good case for dualling and junction improvements along the A10.
- This project will develop options for dualling the A10.
- Also to review and develop the design of 8 junctions along the A10 that were included within the previous study.



# Junctions in Scope

1. Milton Interchange A10 / A14  
*(review & modelling purposes only. This junction is the responsibility of Highways England)*
2. Butt Lane / Park and Ride
3. Denny End Road
4. Cambridge Research Park
5. Waste Treatment Site
6. A1123 Stretham Roundabout
7. A142 Angel Drove (Ely)
8. A142 Witchford Road (Ely)



# What has been said about the A10?

Quotes from Mayor James Palmer:

“We know that for the A10 Dualling has been long on the local wish list, with journey times and congestion already causing frustrating delays and holding back our economy. With future predicted housing and business growth in the Cambridge to Ely corridor, the need for this upgrade couldn’t be clearer”.

“All those who use the A10 to commute should be rest assured that the Combined Authority is determined to fully play its part in finding a solution“

“My job as Mayor is to ensure that the new ministers at the Department for Transport are quite clear as to the importance of these schemes to the people and economy of Cambridgeshire and Peterborough”

# Issues

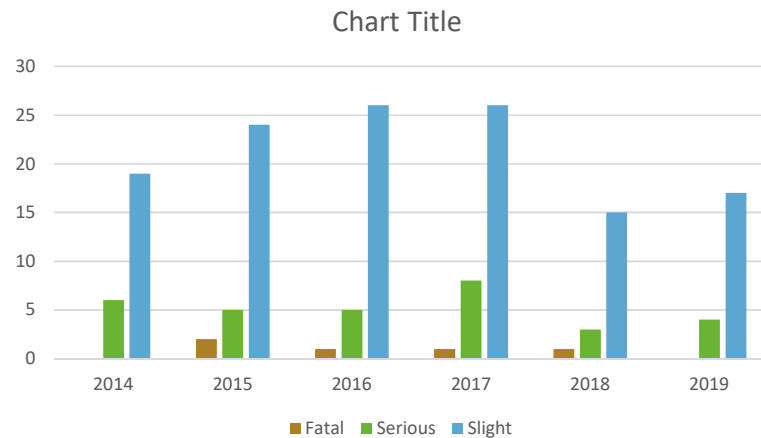
## Transport

- Congestion, resulting in slow journey times.
- Unreliable journey times at all times of the day both for private vehicles and public transport.
- Traffic routes running to the parallel B1049, B1050 and the network of unclassified roads that connect these with the A10.
- Community and environmental impacts with additional vehicle volume within villages.
- No coherent cycling route between Cambridge and Ely. Crossing the A10 at Waterbeach for cyclists proves difficult.

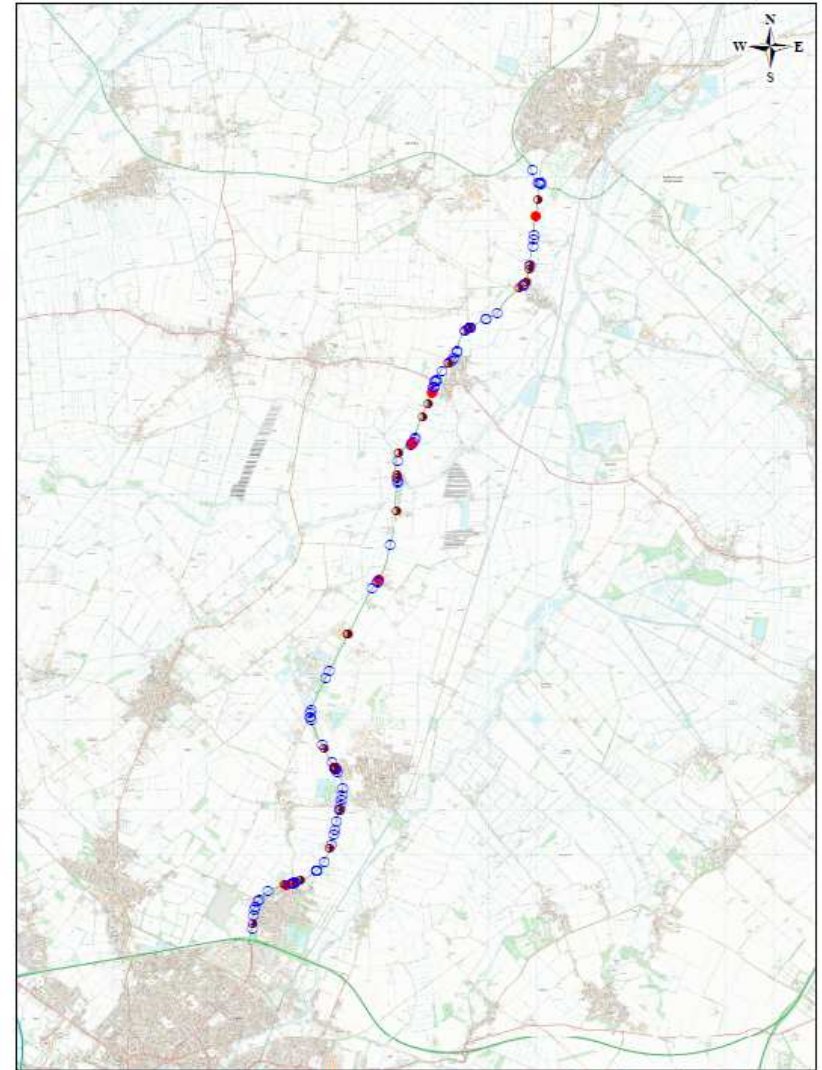
# Issues

Safety on the A10, between 2014 to 2019, there have been:

- 5 fatalities
- 31 serious accidents (required to be in hospital over 24 hours)
- 97 slight accidents (didn't require or spent under 24 hours at hospital)



Cambridgeshire County Council



# Issues

## **Housing and development**

Lack of affordable housing within the corridor for residents who work within the region.

Planners argue that the A10 corridor is “maxed out” and for the North East Cambridge development applications may be required to produce net zero extra vehicle trips.



# Opportunities

## **Transport**

- Reduce congestion for businesses operations including private and public transport services.
- Increase reliability for journey times.
- Improve safety and accident reduction.
- Improved conditions for people walking, cycling or horse riding.
- Reduced traffic in the local area including rural villages along parallel routes.
- Contribute to meeting Local Transport Plan objective of providing residents accessibility to a place of good employment opportunities within 30 minutes travel time.
- Potential interface with the Cambridgeshire Autonomous Metro (to be determined).

## **Housing and Development**

- Improved productivity for existing firms and local businesses along the A10 corridor.
- Allowing new sustainable housing opportunities including Waterbeach Newtown, North East Cambridge and Ely developments.
- Helping create up to 14,000 new jobs at Cambridge Science Park and neighbouring innovation centres.
- Spreading prosperity north along the corridor to Ely and beyond.

# Scheme Objectives

## **Theme 1 - Productivity**

- Increase productivity through improved connectivity to labour, suppliers and markets by reducing congestion and improving journey time reliability along the A10.

## **Theme 2 – Transport Performance**

- Reduce the risk of collisions along the A10 and on parallel 'B' / unclassified roads in local communities relative to 2018 levels.

## **Theme 3 – Quality of Life and Environment**

- Improve the quality of life for residents in local communities by reducing the community severance and environmental impacts of traffic on the built environment. By exceeding good practice standards for air quality and doubling nature ambition.

## **Theme 4 – Employment.**

- Opportunity for 14,000 new jobs in Greater Cambridgeshire by enabling the development of employment sites at North East Cambridge, Cambridge Science Park and Cambridge Research Park.

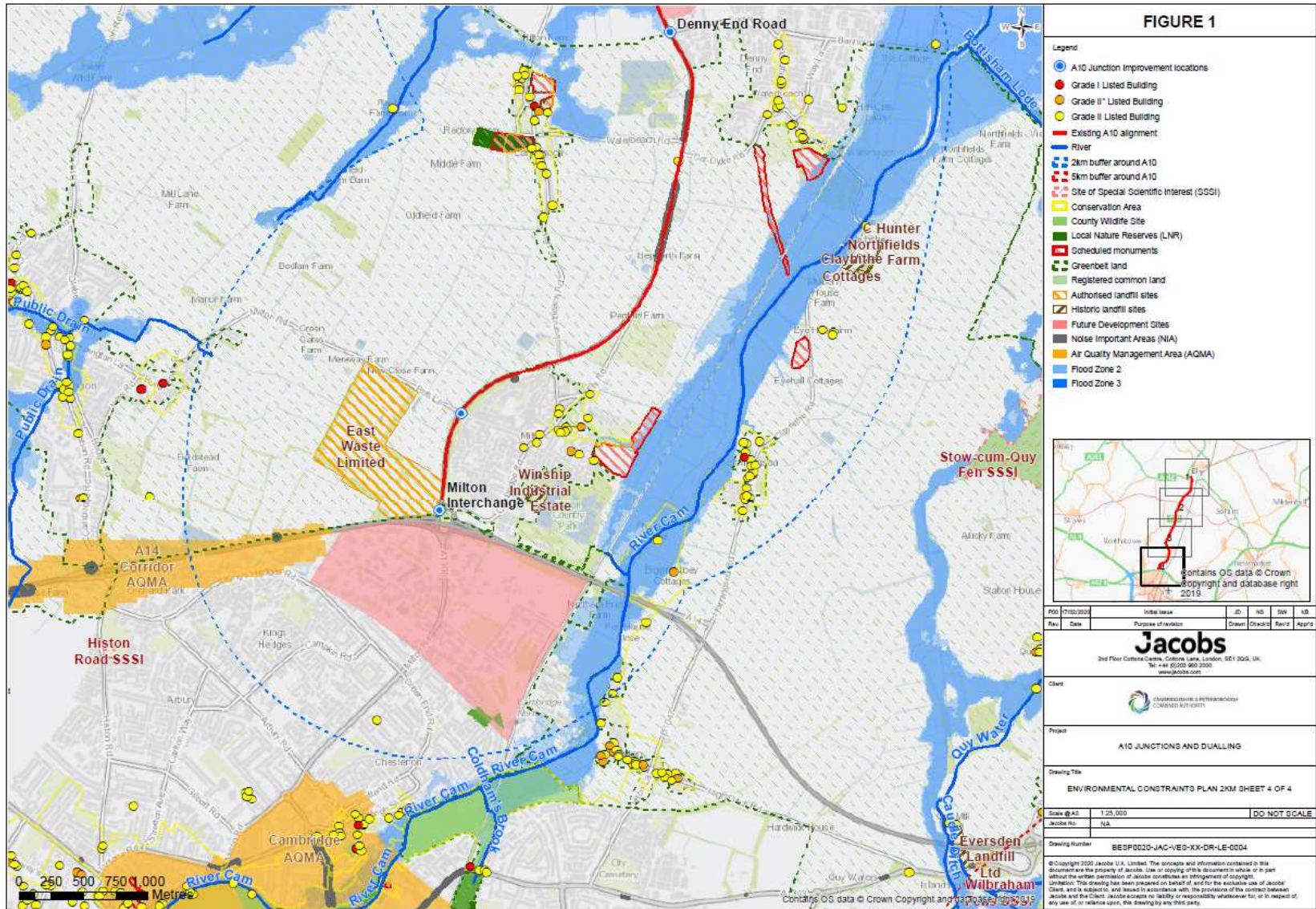
## **Theme 5 – Sustainable and Active Travel**

- Encourage sustainable travel by improving the comfort, reliability, capacity and / or speed of alternative transport services (including CAM, buses, walking, cycling and horse riding) along the A10 corridor.

## **Theme 6 – Housing**

- Support new housing and development to accommodate a growing population and workforce – Waterbeach Newtown, North East Cambridge and Ely developments.

# Constraints Mapping 1



# Thank-you

# Any Questions?

Any queries please contact CPCA Communications team



**CAMBRIDGESHIRE  
& PETERBOROUGH**  
COMBINED AUTHORITY

**JAMES PALMER**  
CAMBRIDGESHIRE &  
PETERBOROUGH MAYOR