

North East Cambridge Programme

Fiona Bryant

Strategic Director

Cambridge City Council



North East Cambridge



North East Cambridge

- North East Cambridge includes 182 hectares of brownfield land, just a 15-minute cycle ride from the city centre, close to the guided busway and 55 minutes to London via Cambridge North Station
- Includes world class science, innovation and business parks, and Cambridge Regional College
- It will help to unlock investment in infrastructure, innovation and economic growth in the Greater Cambridge area as well as the Oxford-Cambridge Tech corridor.
- Development will make a significant contribution to meeting the NPPF priorities and the housing needs of the Greater Cambridge area and the wider Oxford-Cambridge growth corridor, in an area where average house prices are more than 13 times, average salaries.
- It will create an integrated economy that meets the needs of people living and working to create a self-sustaining place, fit for a post pandemic future.
- **Vision - North East Cambridge to be an inclusive, walkable, low-carbon new city district with a lively mix of homes, workplaces, services and social spaces, fully integrated with surrounding neighbourhoods.**

North East Cambridge now...

182 hectares
of brownfield
land

15,000
jobs on the site

3 
Homes

4,400 
unused car parking spaces on
the Cambridge Science Park

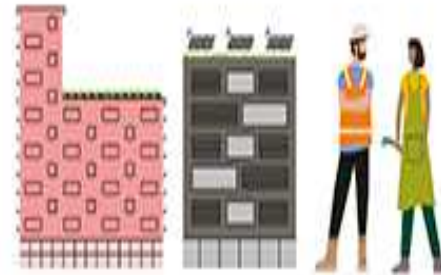
15 minutes from Cambridge city centre by cycle



and in the future...

8,000

homes for **18,000** residents,
40% of new homes will be
genuinely affordable

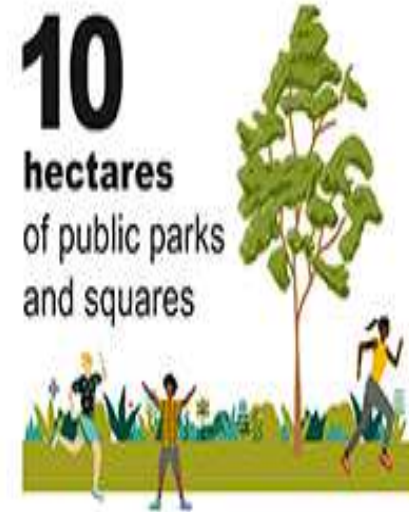


20,000

new jobs created across
many different sectors

10

hectares
of public parks
and squares



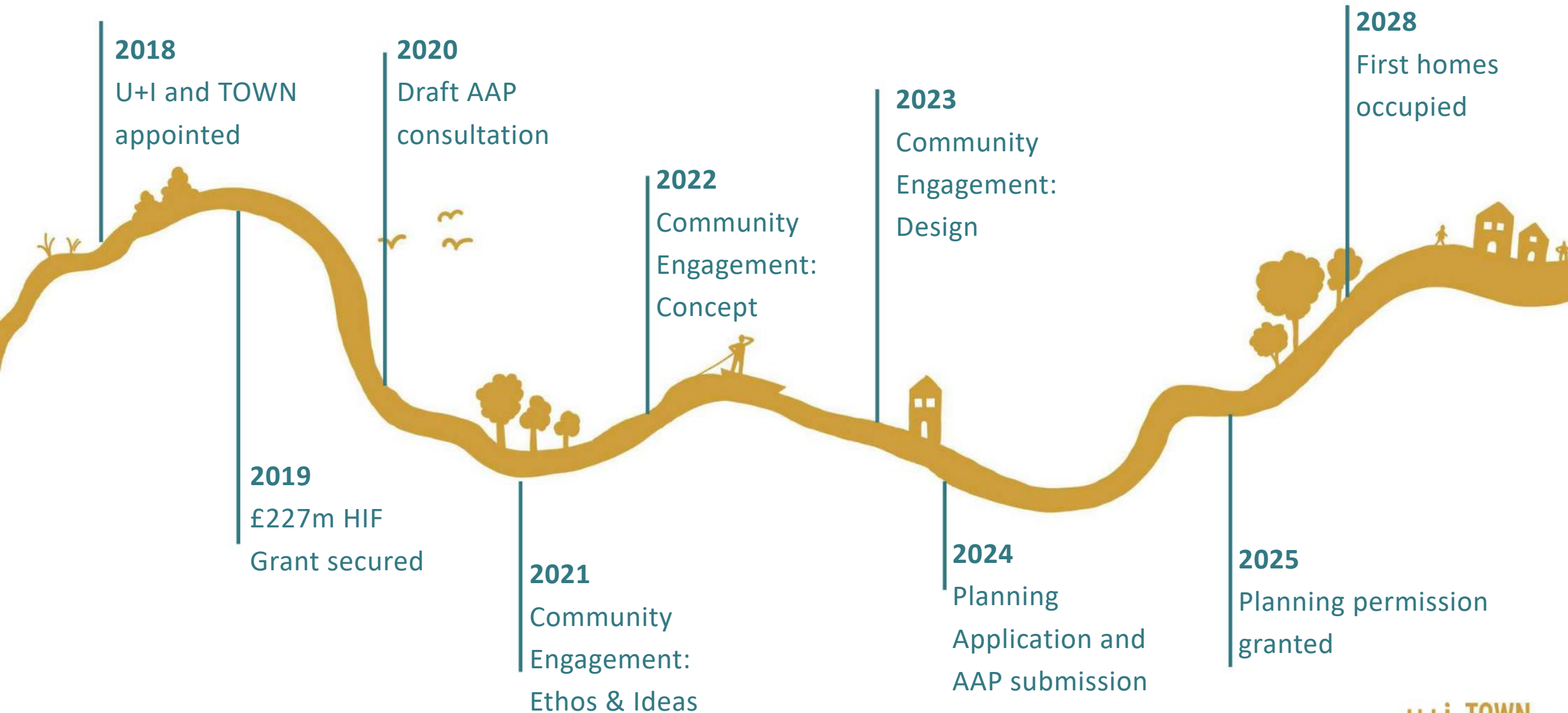
3 primary
schools



1 new
library



10 new or
improved
walking and
cycling
connections



NEC Programme

3 key projects

- North East Cambridge Area Action Plan
- Cambridge Waste Water Treatment Plant Relocation
- Core Site Development

Project 1 – Area Action Plan

- Planning framework for the new quarter
- Spans Local Authorities
- LPA project led by GCSPS
- Draft Consultation report (reg 18) approved 2020
- Consultation ran summer/autumn 2020
- Over 4000 responses
- GCSPS currently reviewing responses
- Regulation 19 report currently planned for approval at CCC/SCDC in Autumn/Winter 2020
- Reg 19 draft will then be temporarily “held” pending determination of DCO before being submitted for adoption in 2024

Project 2 – Waste Water Plant Relocation

- Required to enable the development of sustainable brownfield site in North East Cambridge
- Planning through Development Consent Order
- Section 35 approved – considered as NSIP
- Funded by Housing Infrastructure Fund Programme
- First Consultation completed– Summer 2020
- Preferred relocation site identified January 2021
- Further work on design and engagement in progress
- Next consultation due June 2021/third consultation early 2022
- Submission of DCO 2022 – determination 2023/4
- Completion by March 2028

Housing Infrastructure Funding

- Up to £227m agreed to fund the Relocation project
- Enabling c8000 homes with target 5600 on core site
- Key milestones for achievement
- Recyclable Grant Funding

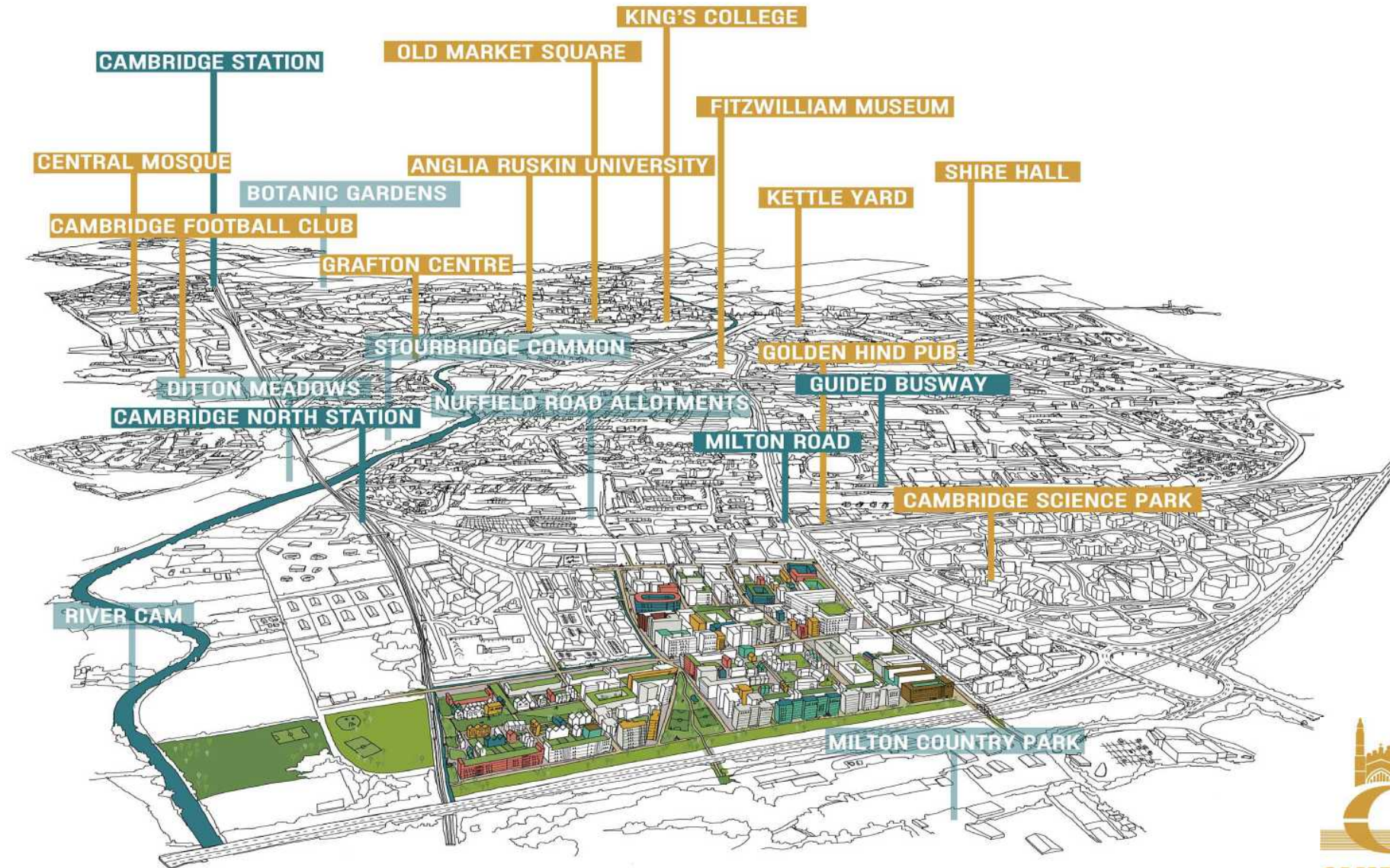
Project 3 – Core Site Development



love every drop
anglianwater



The Opportunity



The Core Site will:

- Support the health, happiness and wellbeing of the people who will live, work and spend time here.
- Be an integral new quarter of Cambridge, taking inspiration from the city, engaging with citizens' present needs and helping shape the future of Greater Cambridge.
- Be an exemplar for development fit for the challenges of the 21st Century, enabling sustainable lifestyle enhancing nature and accelerating the transition zero-carbon world.

- Emerging Business Plan
- Site Launch Summer/Autumn 2021
- Communications and Engagement
- “Festival Week”
- Thematic Workshops
- Meanwhile Use