



CAMBRIDGESHIRE
& PETERBOROUGH
COMBINED AUTHORITY



The Art of the Possible:

Devolved Adult Education in the region

Parminder Singh Garcha
SRO – Adult Education



Today's presentation:

Whistle-stop tour of devolved AEB
(2019-20)

Our AEB super-powers and how we
using them

What can we do differently to better
serve our region?

AEB Strategic Focus



Adult Education Budget (AEB)

Devolved flat budget of **£11.9m** since 2019/20

Funding settlement based on 2017/18 academic year

Funding for citizens aged 19+ studying in FE Colleges, Adult and Community Education (ACE) and Training Providers commissioned by CPCA

AEB focusses on courses at **Level 3** and below

Powers to deviate from national funding

Education and Skills Funding Agency (ESFA) provide funding for none-devolved areas – transactional rather than transformational

Complex funding rules

Processing vs. People and Place

Who do we fund?

- **Further Education Colleges (FE):**

1. Cambridge Regional College
2. Inspire Education Group (Peterborough College and Stamford College)
3. College of West Anglia
4. West Suffolk College
5. Bedford College
6. North Hertfordshire College

- **Sixth-Form College (SFE):**

1. Hills Road Sixth-Form College

- **Adult and Community Education (ACE)**

1. City College Peterborough
2. Cambridgeshire Skills

- **Independent Training Providers (ITPs)**

1. Back2Work Training
2. Steadfast Training
3. The Skills Network
4. NACRO

Programmes
within AEB:

Adult Skills (80%)

Community Learning (20%)

Discretionary Learner
Support (

Adult Skills: Legal Entitlements

The **legal entitlements** to full funding for eligible adult learners, set out in the Apprenticeships, Skills, Children and Learning Act 2009:

- English and maths, for 19+ up to and including level 2, (not previously attained a GCSE grade A* - C or grade 4, or higher)
- First full qualification at **Level 2** for individuals aged 19 to 23
- First full qualification at **Level 3** for individuals aged 19 to 23
- Essential **digital skills** qualifications, up to and including level 1, for individuals aged 19 and over, who have digital skills assessed at below level 1



CPCA Funding Table 2020/21

Provision	19- to 23-year-olds	24+ unemployed	24+ other
English and maths, up to and including level 2 (Must be delivered as part of the legal entitlement)	Fully funded	Fully funded	Fully funded
Essential Digital Skills Qualifications up to and including level 1	Fully funded	Fully funded	Fully funded
Level 2 (excluding English and maths) (First full level 2 must be delivered as part of the legal entitlement)	Fully funded (first and full)	Fully Funded	Fully funded (Co-funded)
Learning to progress to level 2	Fully funded^ (up to and including level 1)	Fully funded	Fully funded
Level 3 (First full level 3 must be delivered as part of the legal entitlement of 24+ Adult Offer)	Fully funded (first and full)	Fully-funded	First L3 fully funded (Other L3 Loan Funded)
	Loan-funded** (previously achieved full level 3 or above)		
English for speakers of other languages (ESOL) learning up to and including level 2	Fully funded	Fully funded	Fully funded (Co-funded)
Learning aims up to and including level 2, where the learner has already achieved a first full level 2, or above	Co-funded	Fully funded	Co-funded
	Fully funded – unemployed		
Learning aims up to and including level 2, where the learner has not achieved a first full level 2, or above	N/A	Fully Funded	Co-funded



Community Learning

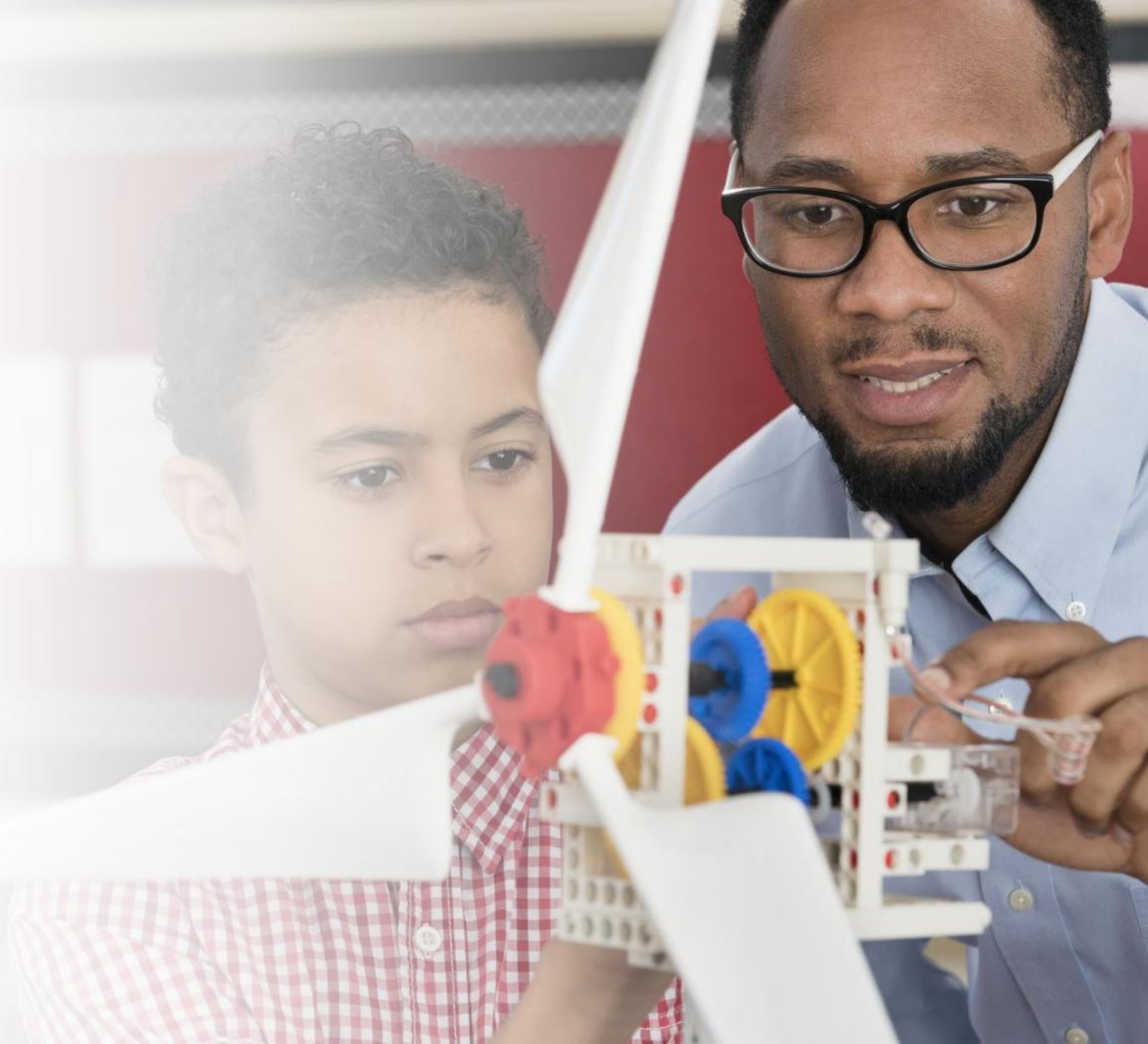
To develop the skills, confidence, motivation and resilience of adults of different ages and backgrounds to:

- progress towards formal learning or employment
- improve health and well-being, including mental health
- develop stronger communities



Components of Community Learning

- **Personal and Community Development Learning (PCDL)** learning for personal and community development, cultural enrichment, intellectual or creative stimulation and for enjoyment (in most cases not leading to a formal qualification)
- **Family English, Maths and Language** - learning to improve the English, language and maths skills of parents, carers or guardians and their ability to help their children
- **Wider Family Learning** - learning to help different generations of family members to learn together how to support their children's learning
- **Neighbourhood Learning in Deprived Communities (NLDC)** supports local Voluntary and other third sector organisations to develop their capacity to deliver learning opportunities for the residents of disadvantaged neighbourhoods





Other Funding:

- **National Skills Fund** - funding for First Level 3 qualifications from DfE List (Lifetime Skills Guarantee)
- **Sector Based Work Academy Programme (SWAP)**
Up to 6 week programme for Jobcentre Plus claimants with
Pre-employment training, Work experience placement and Job interview
- **High Value Courses for school/college leavers**
Level 2 & 3 to support industrial strategy, for high risk of NEET



Our funding powers

- Manage and be accountable for the budget transferred to us
- Allocate the funds transferred to us, determining our own procurement requirements and processes
- Freedom to set our own **local priorities** (Align to Strategic Skills Plans)
- Determine our own Funding and Performance Management Rules
- Set our own contracting and conditions of funding clauses
- Set and put in place our own funding rates and payment arrangements
- Determine our own performance management rules
- Manage relationships providers with whom we contract
- Leverage of AEB funding
- Innovate and test new ideas (eg Innovation Fund)

The Future



Deliver our vision to be the 'best in class'. Showcase our success



Align AEB to our regional Employment and Skills priorities



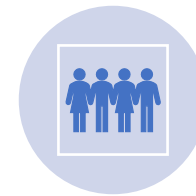
Build a case for a fairer, increased settlement for the region



Lobby for greater devolution of future skills funding to widen participation



Continue to test and embed funding flexibilities that deliver prosperity for the region



Implement policies which boost **Social mobility** and address inequalities in the labour market

How are we using our powers to do things differently?

Funding flexibilities - 2020/21

- ✓ Low Wage scheme - £18K before fees become payable
- ✓ Fully funded English for Speakers of Other Languages (ESOL)
- ✓ Fully funded First Level 2 qualifications for adults aged 24+
- ✓ Top-up funding for most deprived postcodes in the region

Flexibilities for 2021/22

- ✓ Low Wage Scheme rises to **£20K**
- ✓ **Second Level 3** qualification for unemployed or to reskill into a priority sector
- ✓ **Local Youth Offer** - funding rate uplift for 19-23 Entitlement (more to come!)
- ✓ **Level 4 Pilot** in priority sectors
- ✓ Top-up funding for deprived areas extended
- ✓ **Care Leavers 19-22** - Extended Offer
- ✓ **Support for Veterans** - Under development

And there's more...

Innovation Fund – capital and revenue to test different approaches - £0.6m awarded to 12 different projects

'Light-touch procurement' process for new providers

Capital funding for ACE providers

Local Governance – Skills Committee

Stakeholder Consultation

Funding for in-year growth

Responsiveness to learners and employers

What more can we do to improve the impact of devolved AEB in the region?



Improve co-design with providers and employers to drive up participation in learning



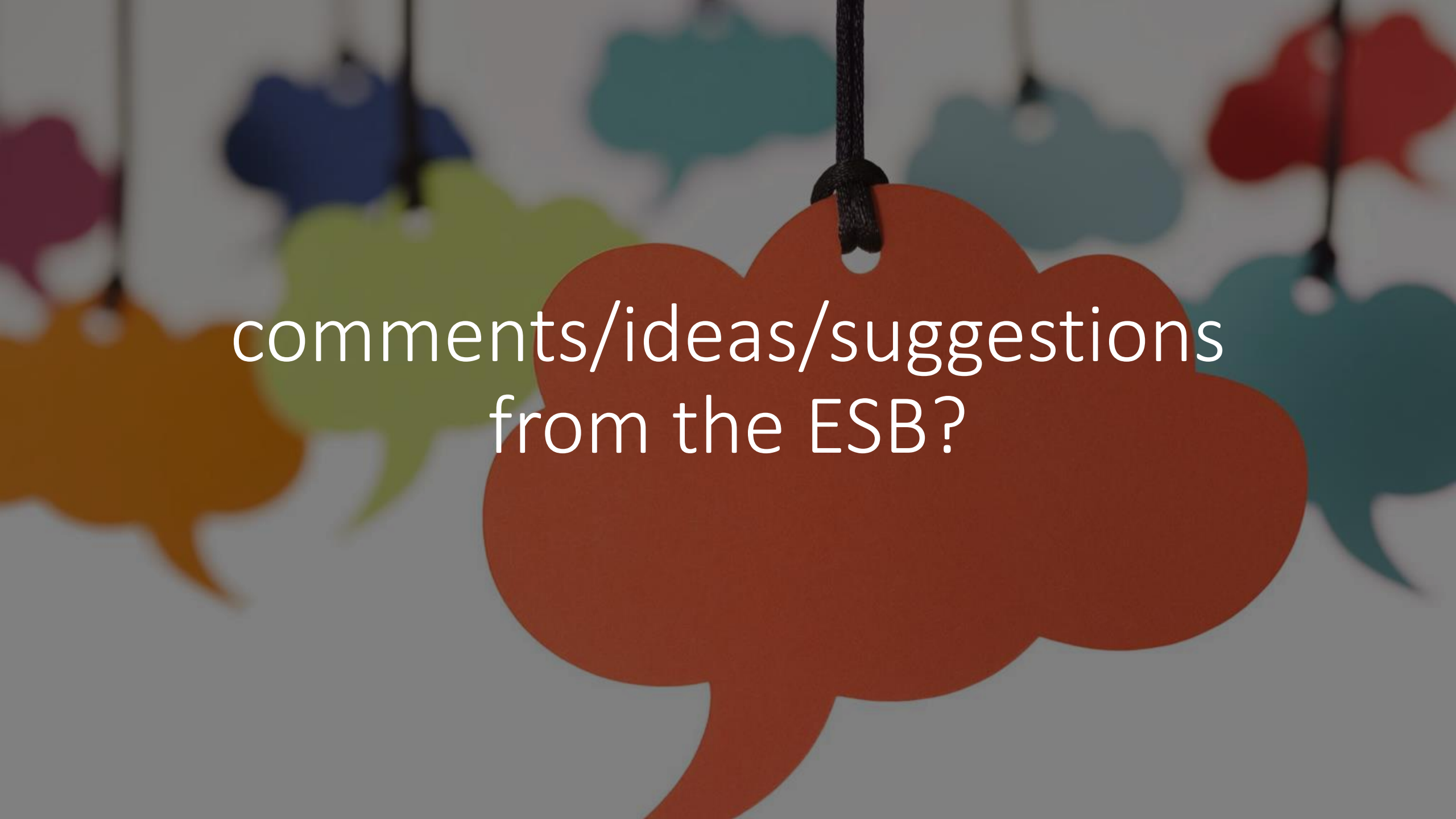
Lever capital funds to build capacity



Reduce red-tape and streamline processes



Tell the story to showcase success



comments/ideas/suggestions
from the ESB?