

Census 2021: population and household estimates, Cambridgeshire and Peterborough

Research Team, Business Intelligence

28 June 2022

Research.Group@cambridgeshire.gov.uk

Census 2021: population and household estimates for Cambridgeshire and Peterborough

- Cambridgeshire

- Usual resident population has grown by 9.2% to 678,600, an increase of 57,400 from Census 2011 (population 621,200)
- Total number of households has increased by 10.5% to 277,600, an increase of 26,400 from Census 2011 (251,200 households)

- Peterborough

- Usual resident population has grown by 17.5% to 215,700, an increase of 32,100 from Census 2011 (population 183,600)
- Total number of households has increased by 14.2% to 84,500, an increase of 10,500 from Census 2011 (74,000 households)

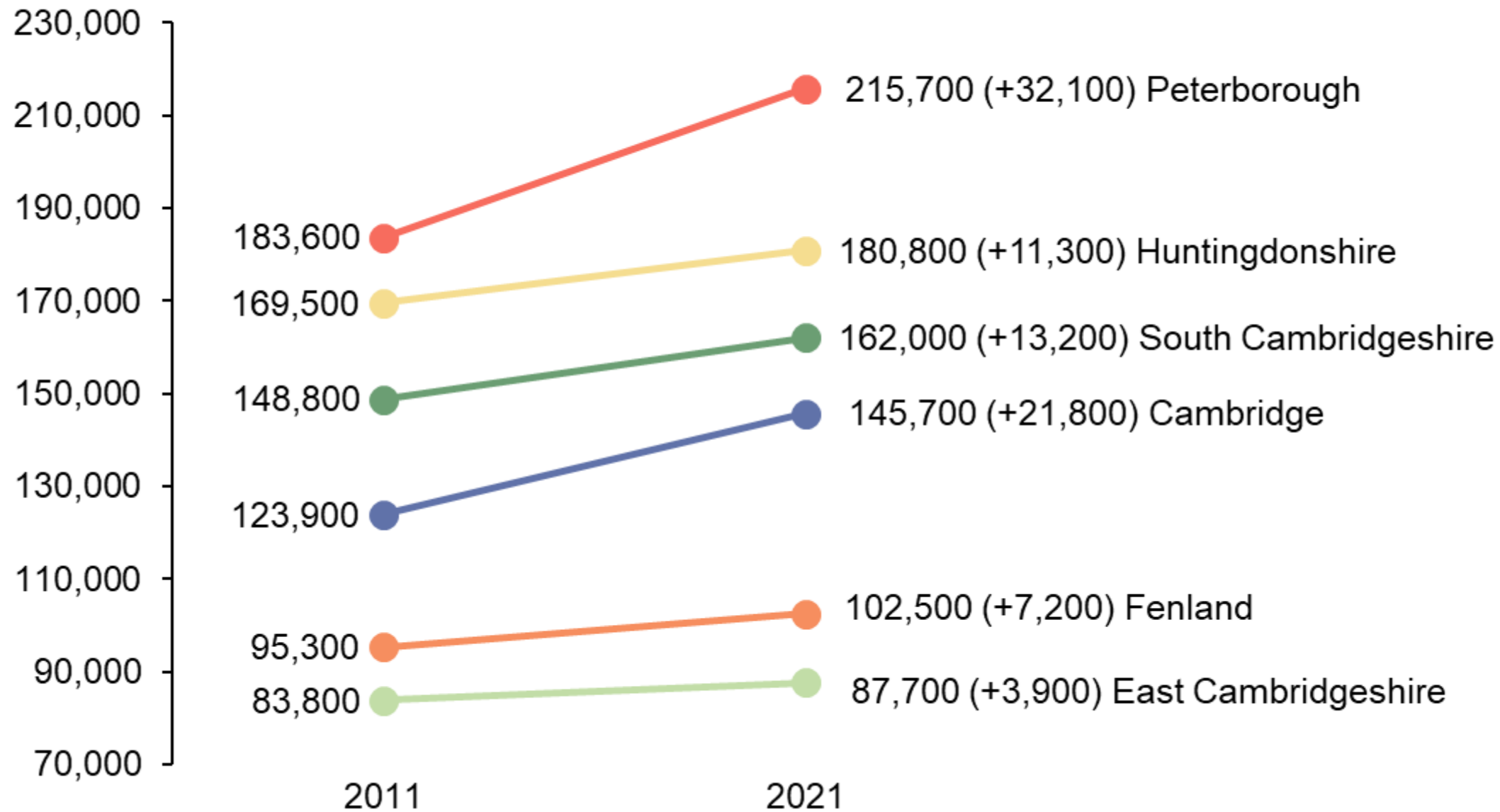
Census 2021: population and household estimates for Cambridgeshire and Peterborough

- The population has increased more in the urban centres
 - Very significant population growth in the urban areas, Cambridge and Peterborough (+17% from Census 2011, compared to England +6.6% and East of England +8.3%)
 - Growth in more rural districts ranges between 4.7% and 8.9%
- In the rural districts, the over 65 population has grown a lot more than the working age population
 - East Cambridgeshire, Fenland, Huntingdonshire and South Cambridgeshire:
 - Over 65 years age group has increased by between 21.2% and 33.7%
 - 0-19 years age group has changed by between -2.5% to +6.4%
 - Working age populations (broadly represented by 20-64 years age group) has changed by between 1.9% and 10.1%
 - Cambridge and Peterborough:
 - Population growth since Census 2011 is more evenly spread across all age groups

Census 2001-21: Usual resident population

Area	Census 2021	Census 2011	Census 2001	Change 2011-2021, %	Change 2001- 2011, %	Change 2001- 2021, %
Cambridge	145,700	123,900	108,900	17.6	13.8	33.8
East						
Cambridgeshire	87,700	83,800	73,200	4.7	14.5	19.8
Fenland	102,500	95,300	83,500	7.6	14.1	22.8
Huntingdonshire	180,800	169,500	157,000	6.7	8.0	15.2
South						
Cambridgeshire	162,000	148,800	130,100	8.9	14.3	24.5
Cambridgeshire	678,600	621,200	552,700	9.2	12.4	22.8
Peterborough	215,700	183,600	156,100	17.5	17.7	38.2
Cambridgeshire and Peterborough	894,300	804,800	708,700	11.1	13.6	26.2
East of England	6,334,500	5,847,000	5,388,100	8.3	8.5	17.6
England	56,489,80	53,012,50	49,138,800	6.6	7.9	15.0

Usual resident population, Census 2011 to 2021



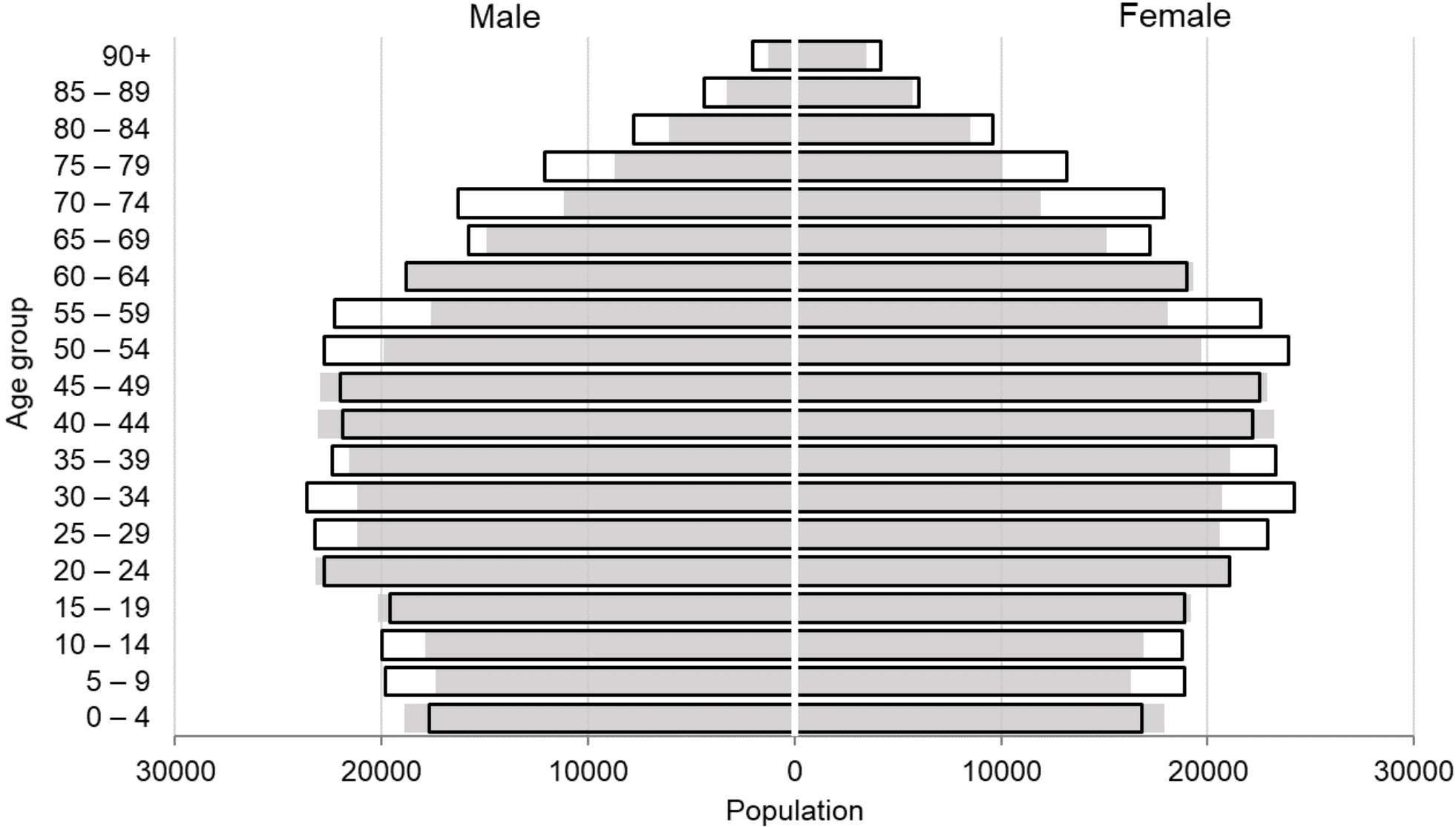
Census 2001-21: Number of occupied households

Area	Census 2021	Census 2011	Census 2001	Change 2011-2021, %	Change 2001- 2011, %	Change 2001- 2021, %
Cambridge	52,400	46,700	42,700	12.2	9.5	22.7
East						
Cambridgeshire	37,200	34,600	29,800	7.5	16.2	24.8
Fenland	44,100	40,600	35,200	8.6	15.4	25.3
Huntingdonshire	76,900	69,300	63,100	11.0	9.9	21.9
South						
Cambridgeshire	67,000	60,000	52,200	11.7	14.9	28.4
Cambridgeshire	277,600	251,200	222,900	10.5	12.7	24.5
Peterborough	84,500	74,000	65,400	14.2	13.2	29.2
Cambridgeshire and Peterborough	362,100	325,300	288,300	11.3	12.8	25.6
East of England	2,628,700	2,423,000	2,232,000	8.5	8.6	17.8
England	23,435,700	22,063,400	20,451,400	6.2	7.9	14.6

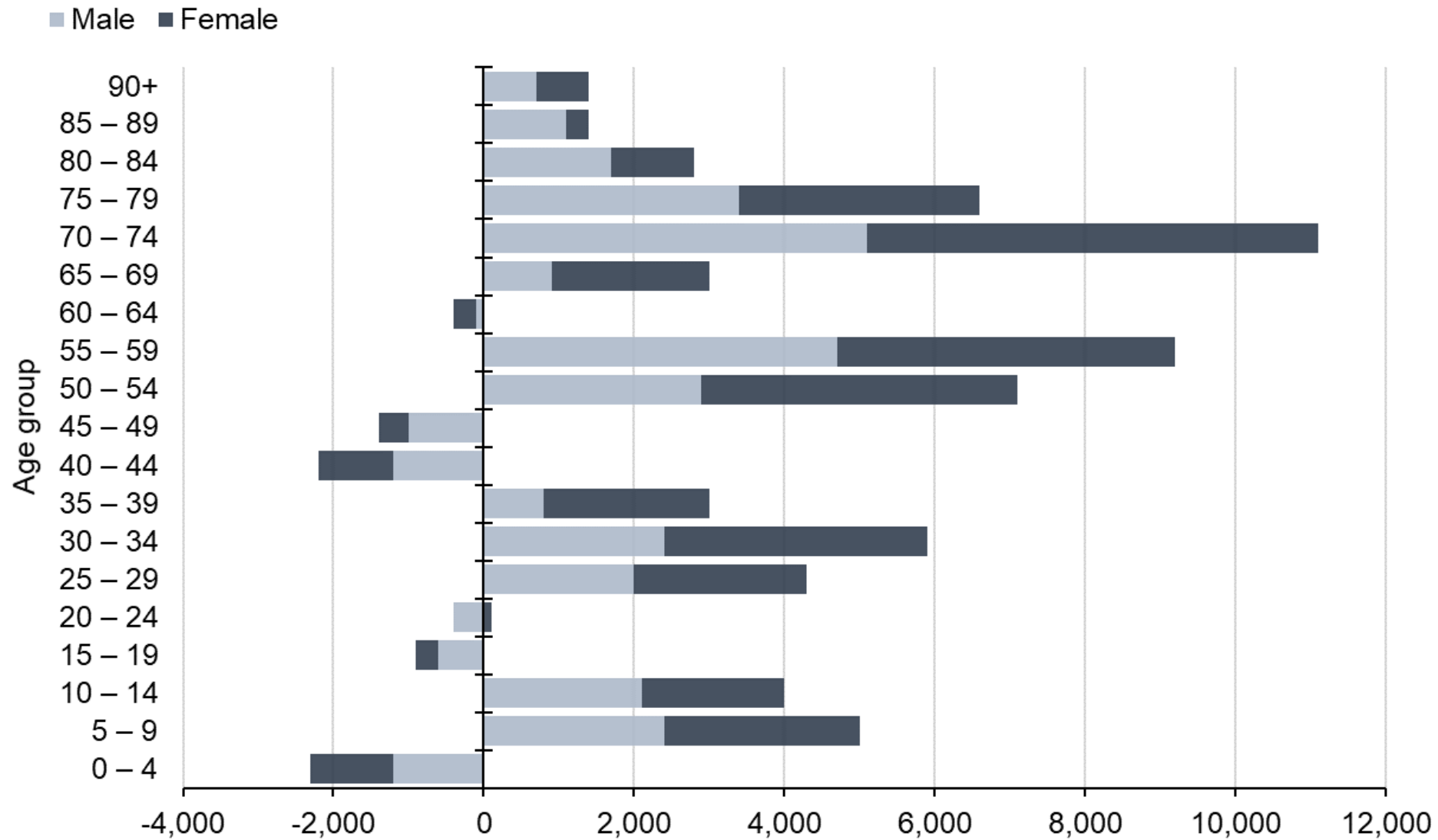
Cambridgeshire

Cambridgeshire Census 2021 and Census 2011 population by sex and age group

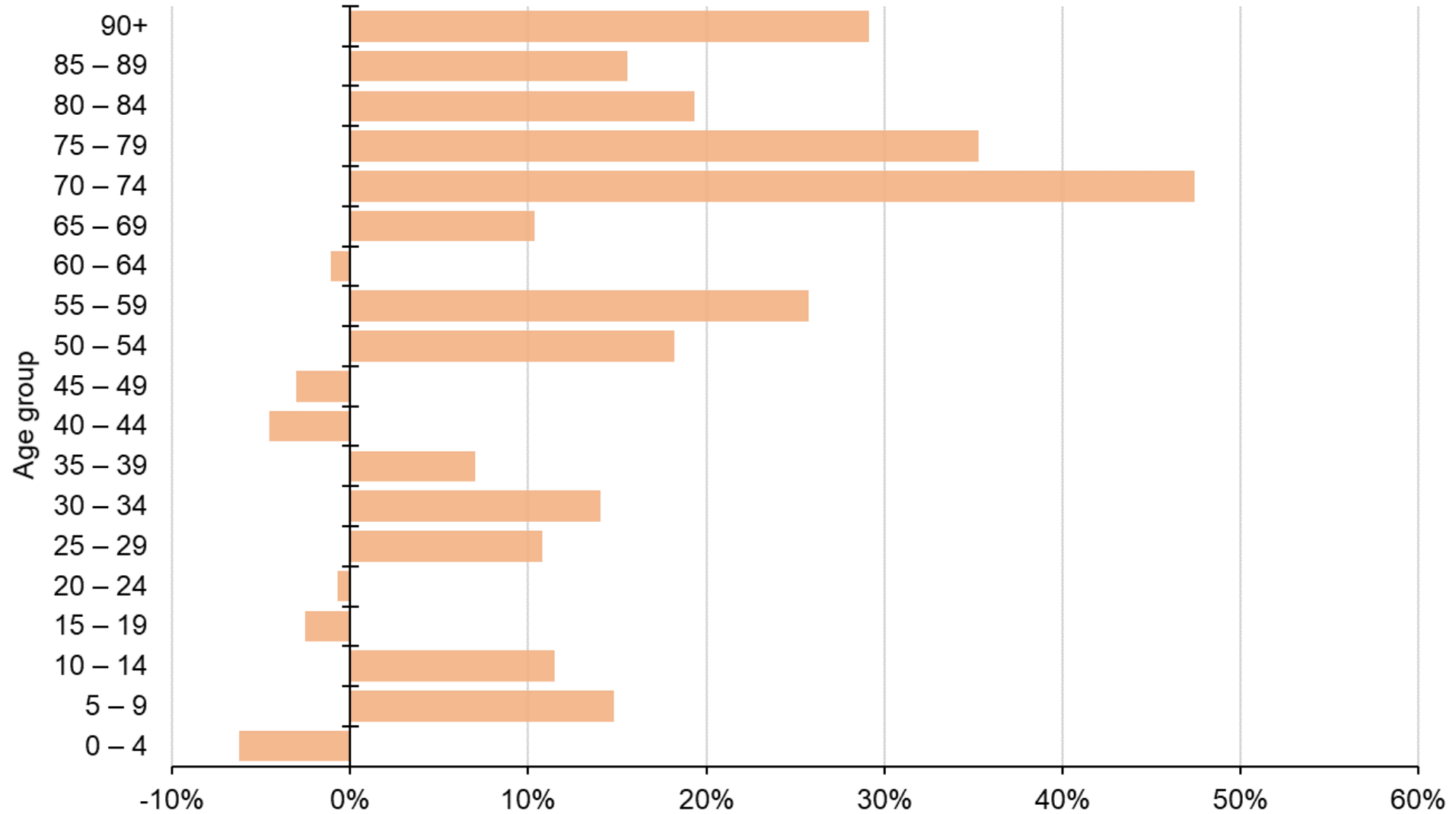
Census 2021
 Census 2011



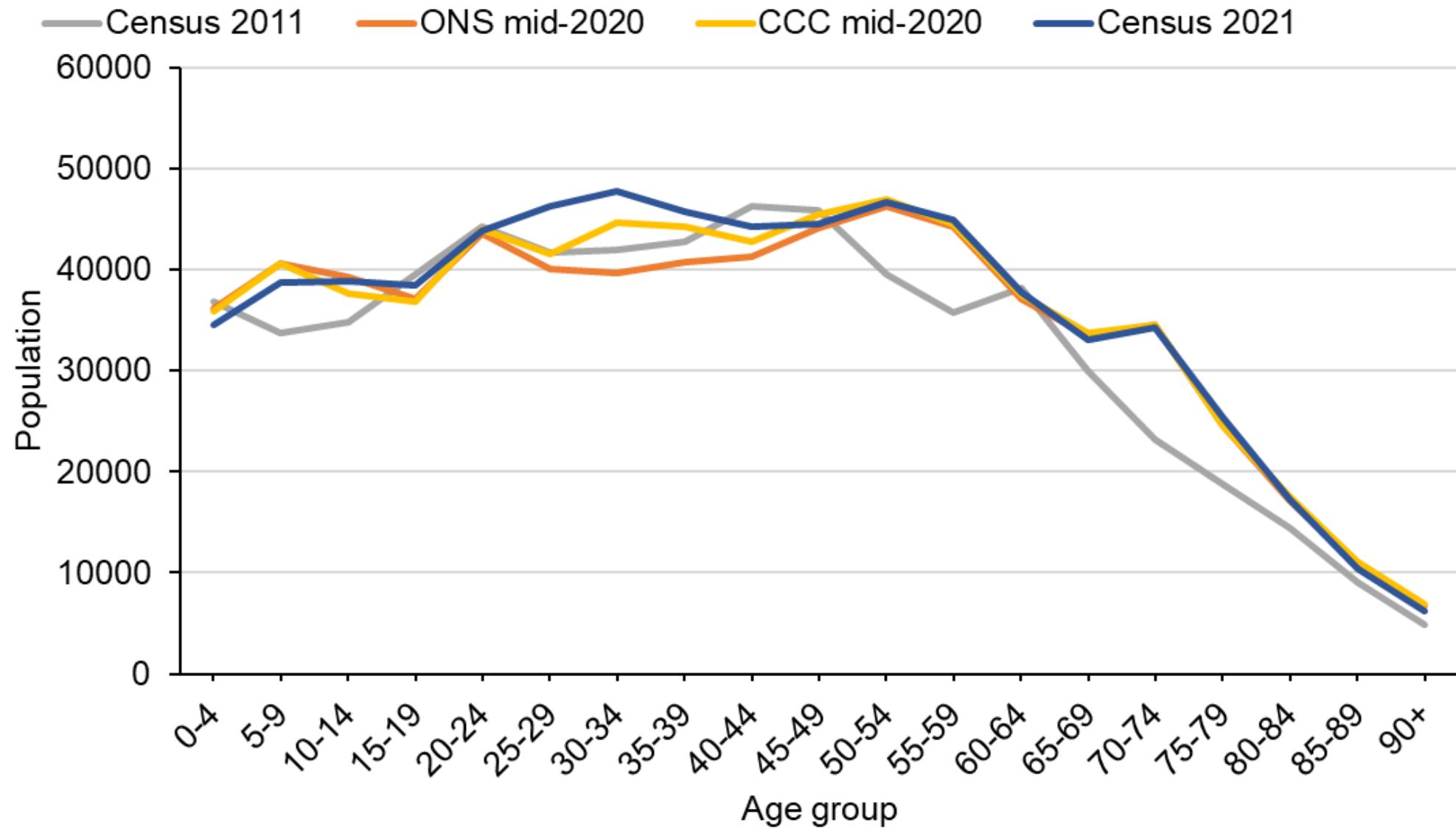
Change in Cambridgeshire population by sex and age group, Census 2011 to Census 2021



% change in Cambridgeshire population by age group, Census 2011 to Census 2021



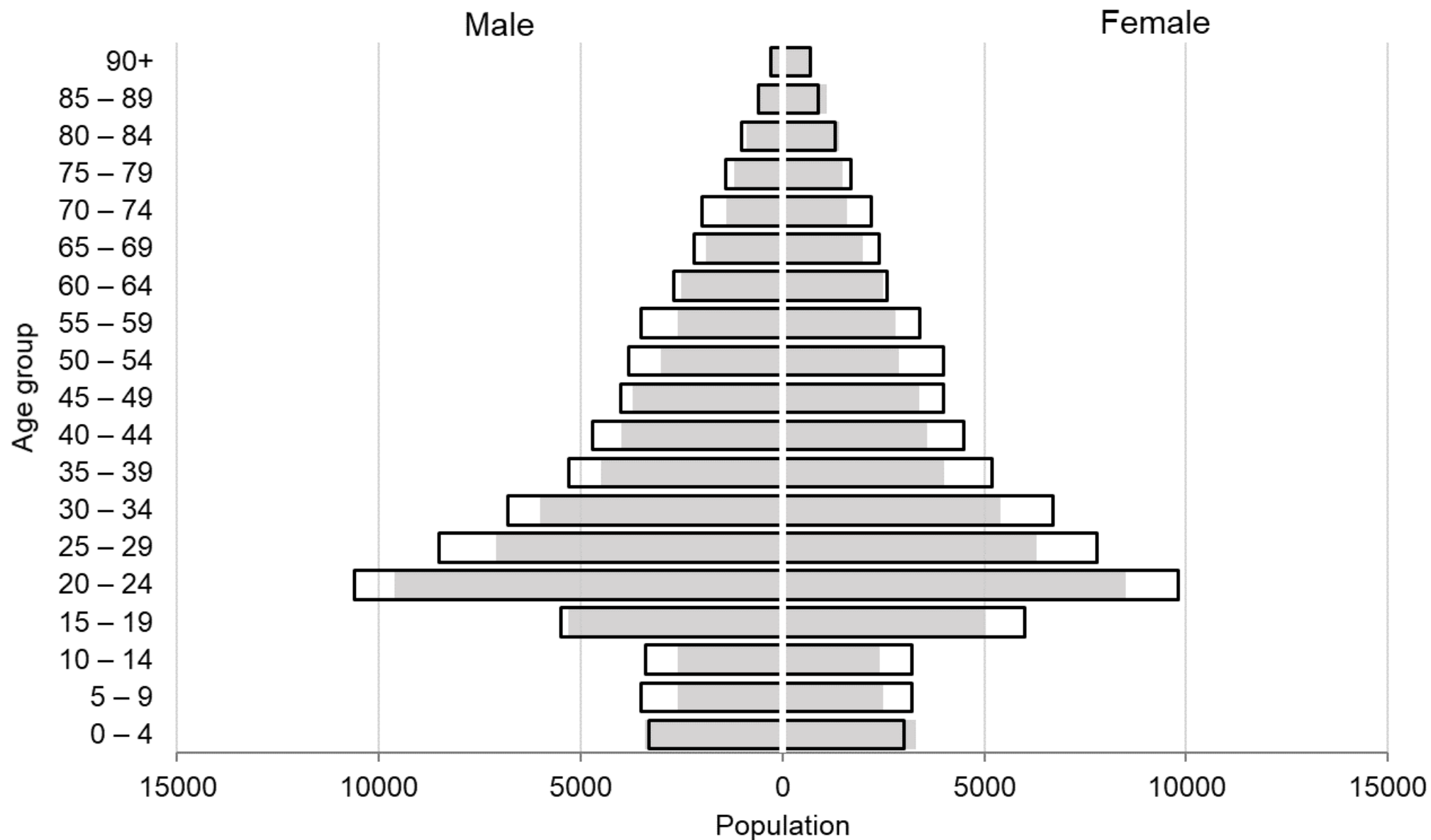
Comparison of Cambridgeshire population estimates by age group



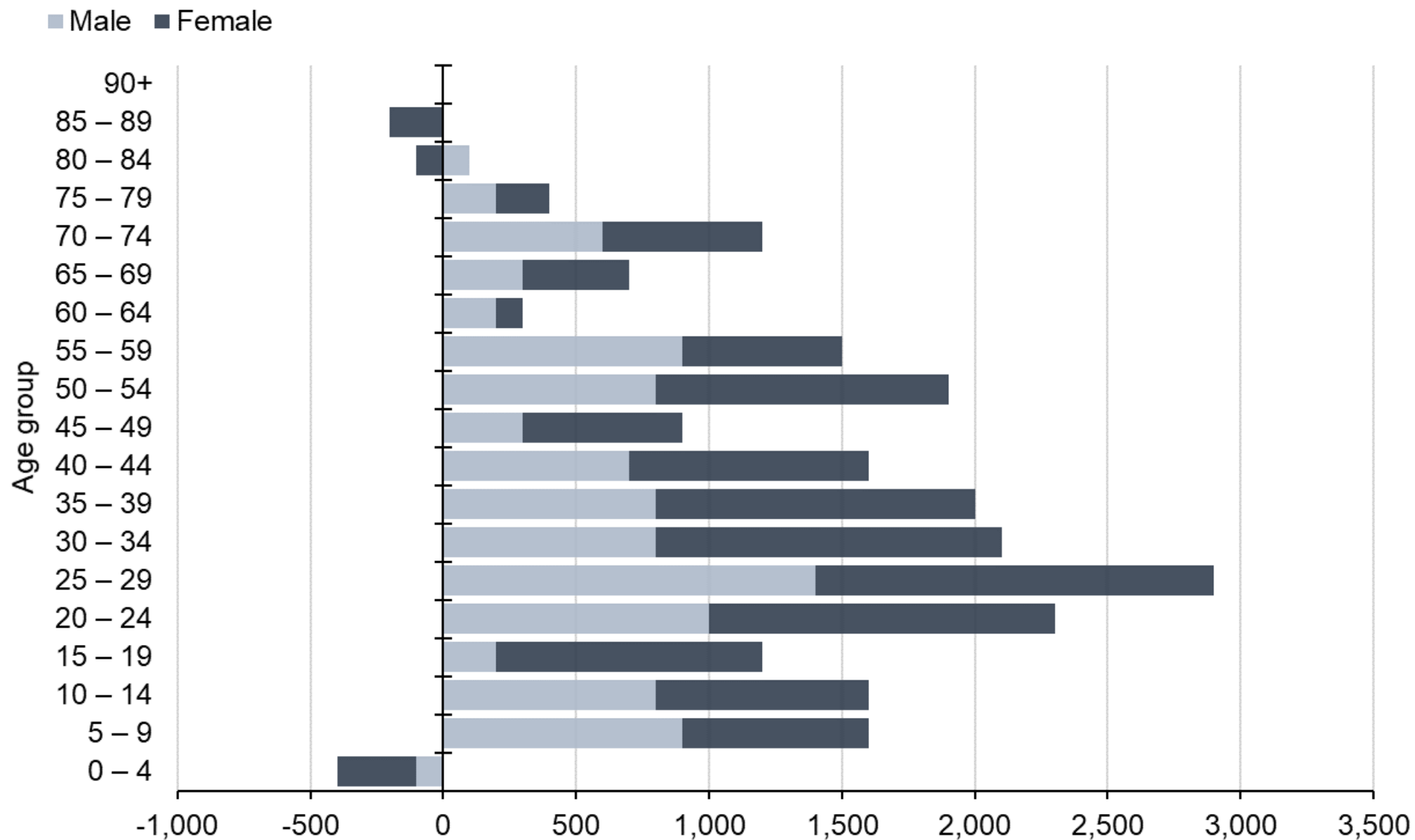
Cambridge

Cambridge Census 2021 and Census 2011 population by sex and age group

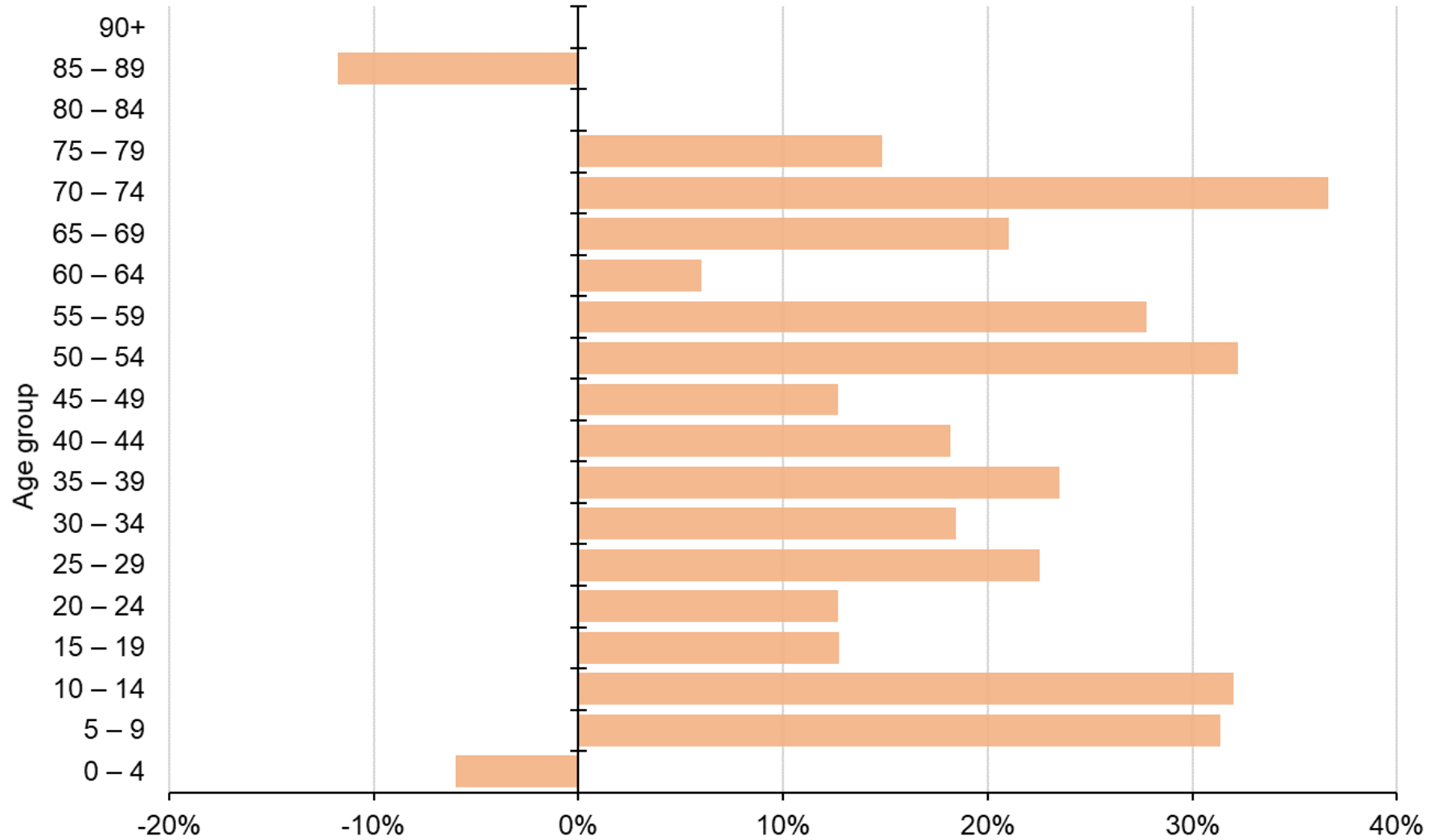
□ Census 2021 ■ Census 2011



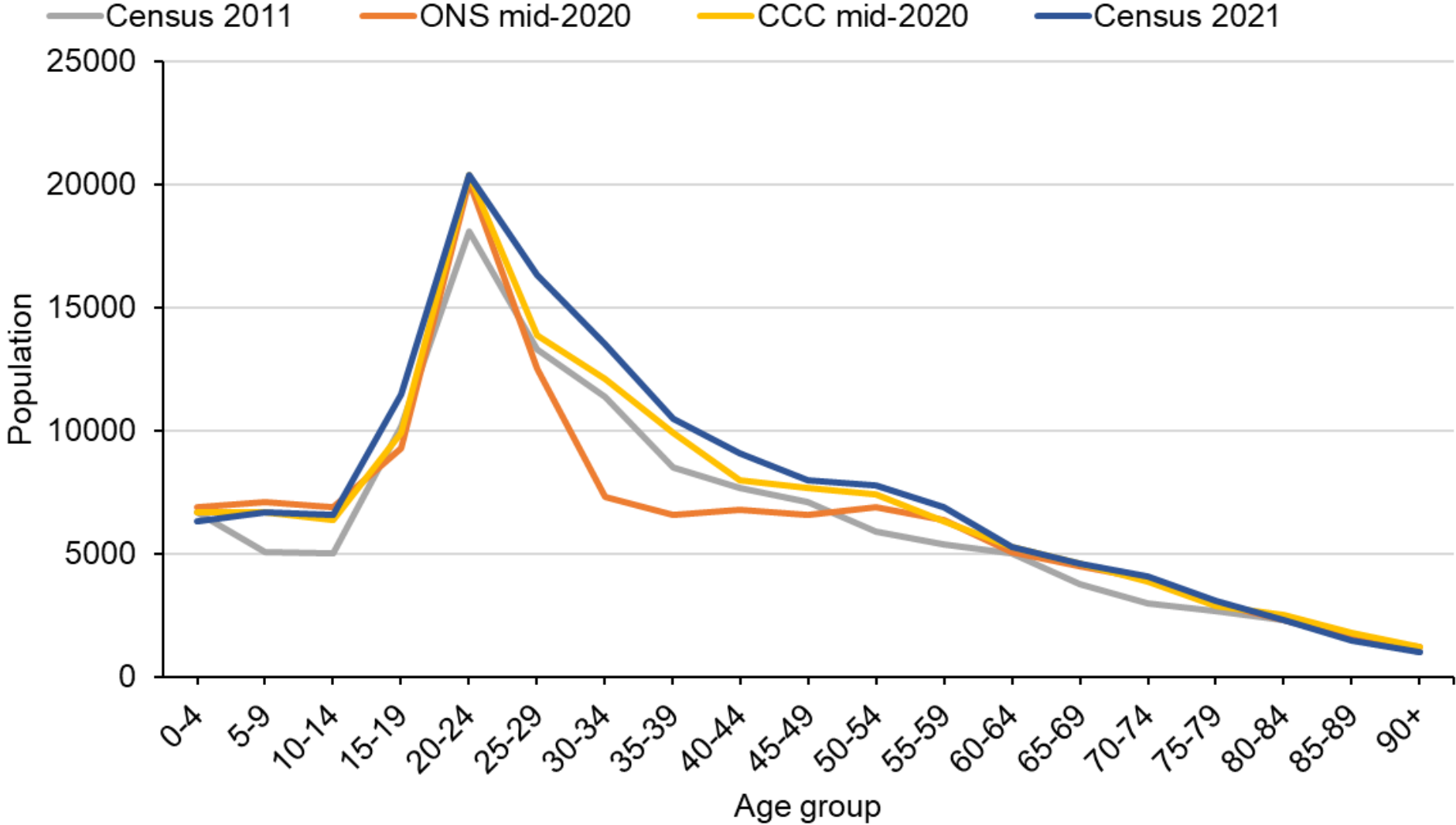
Change in Cambridge population by sex and age group, Census 2011 to Census 2021



% change in Cambridge population by age group, Census 2011 to Census 2021



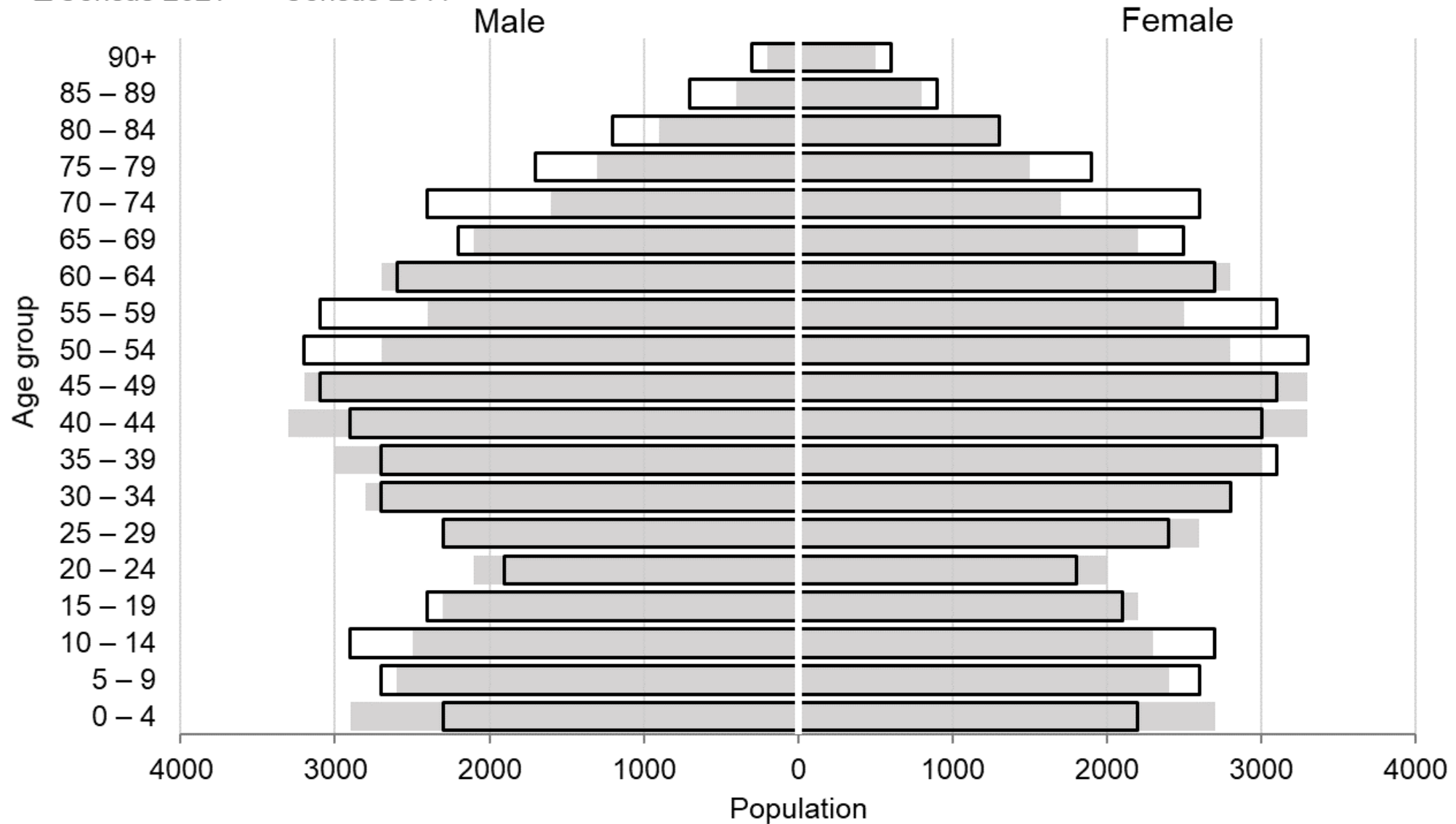
Comparison of Cambridge population estimates by age group



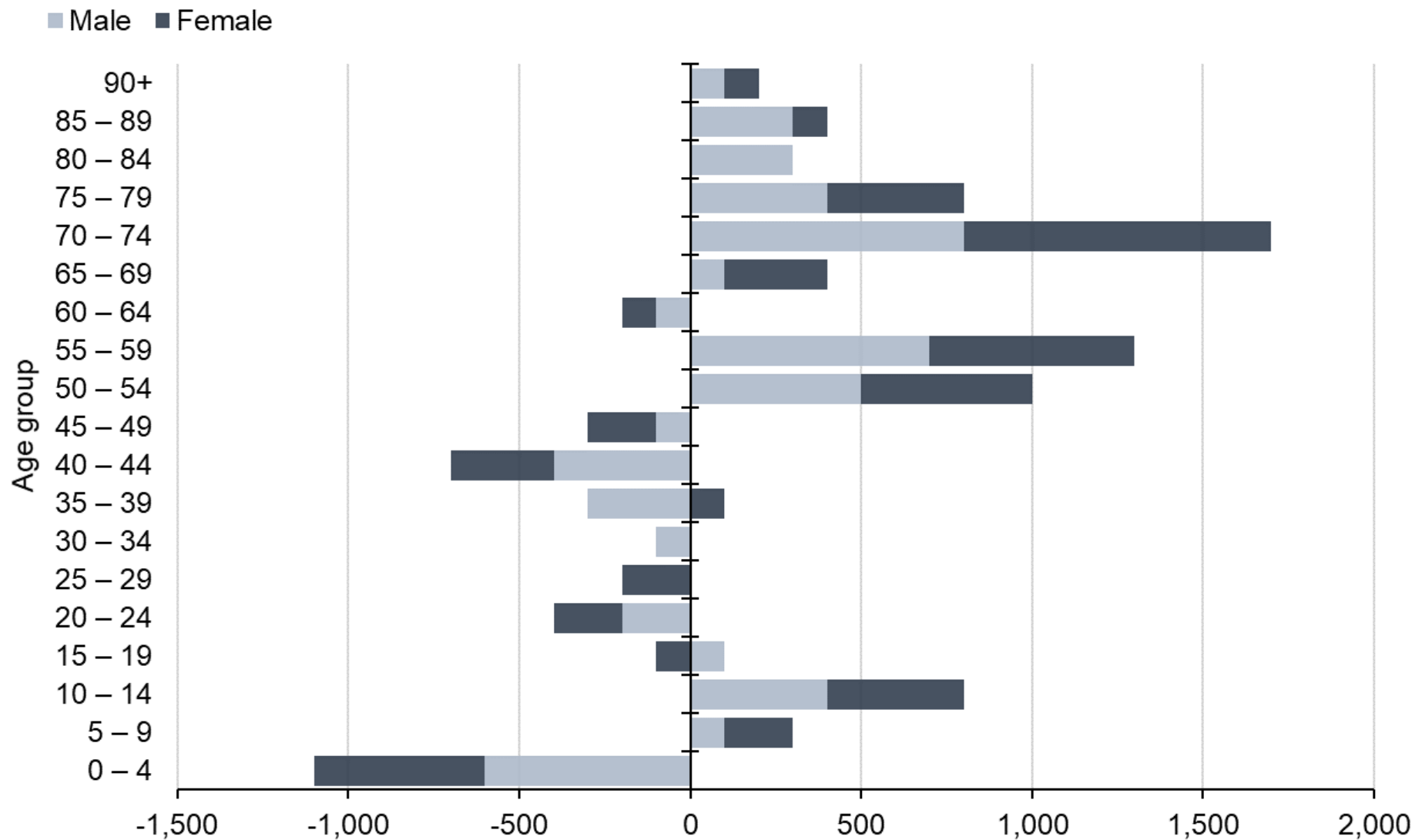
East Cambridgeshire

East Cambridgeshire Census 2021 and Census 2011 population by sex and age group

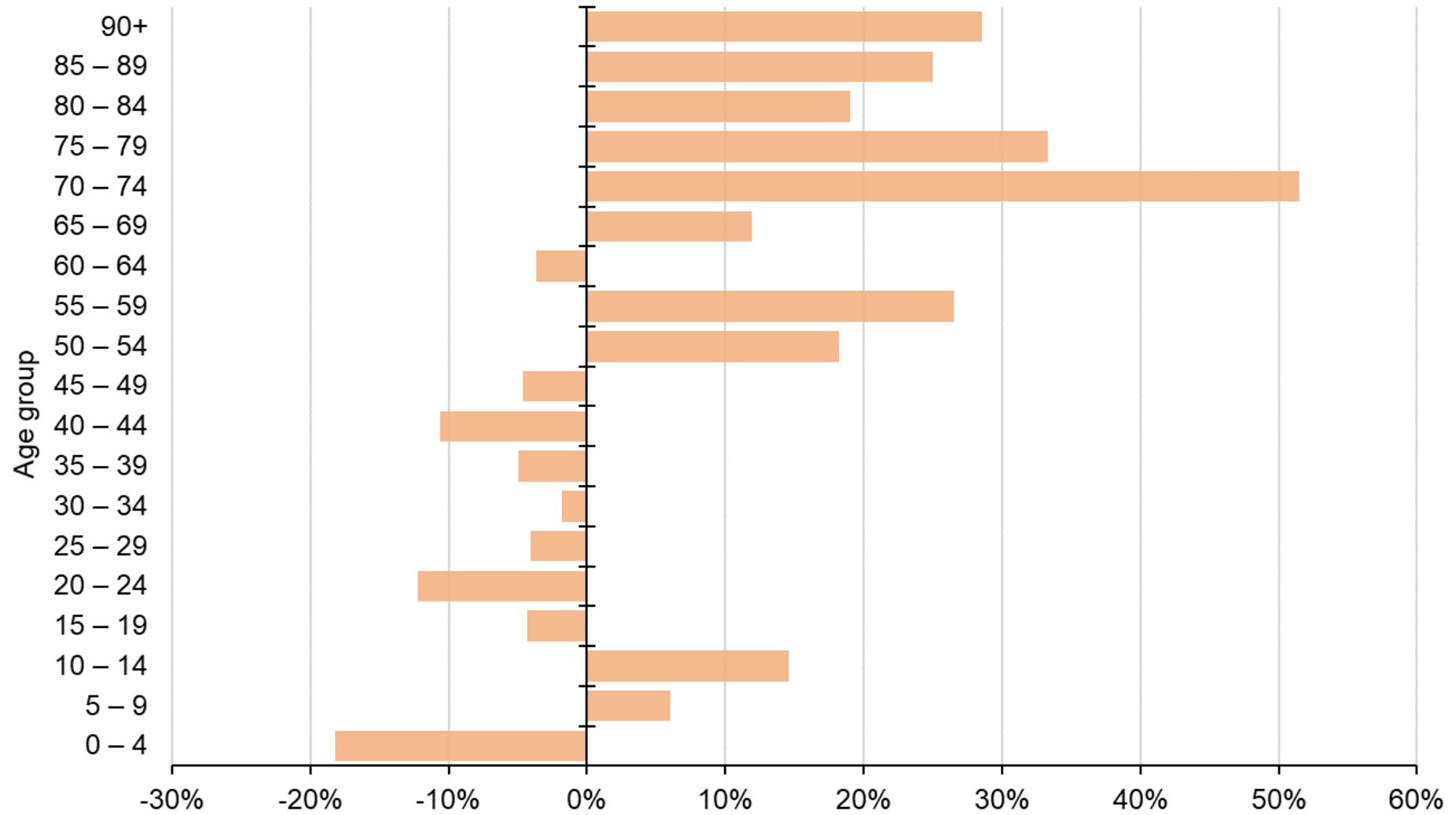
□ Census 2021 ■ Census 2011



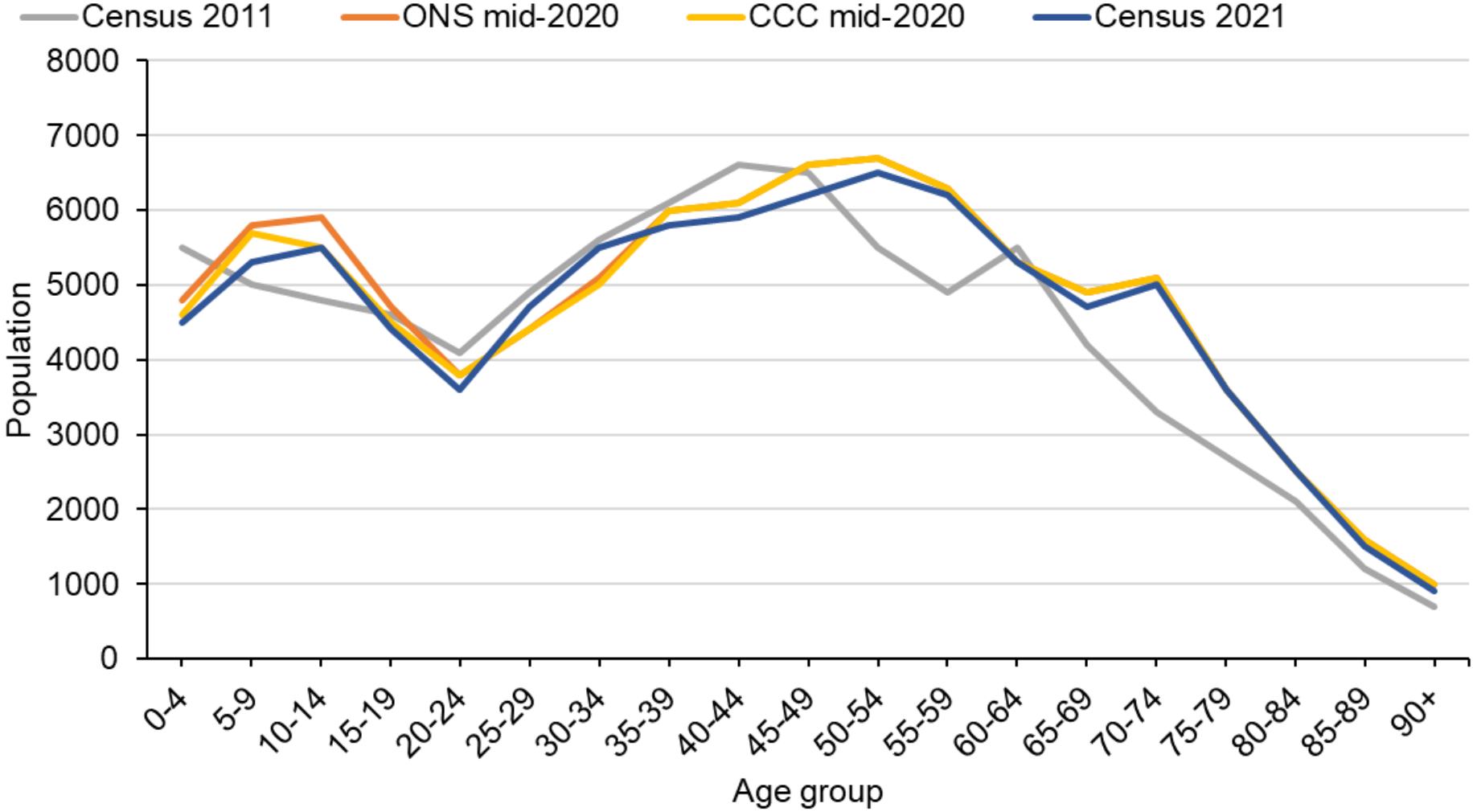
Change in East Cambridgeshire population by sex and age group, Census 2011 to Census 2021



% change in East Cambridgeshire population by age group, Census 2011 to Census 2021



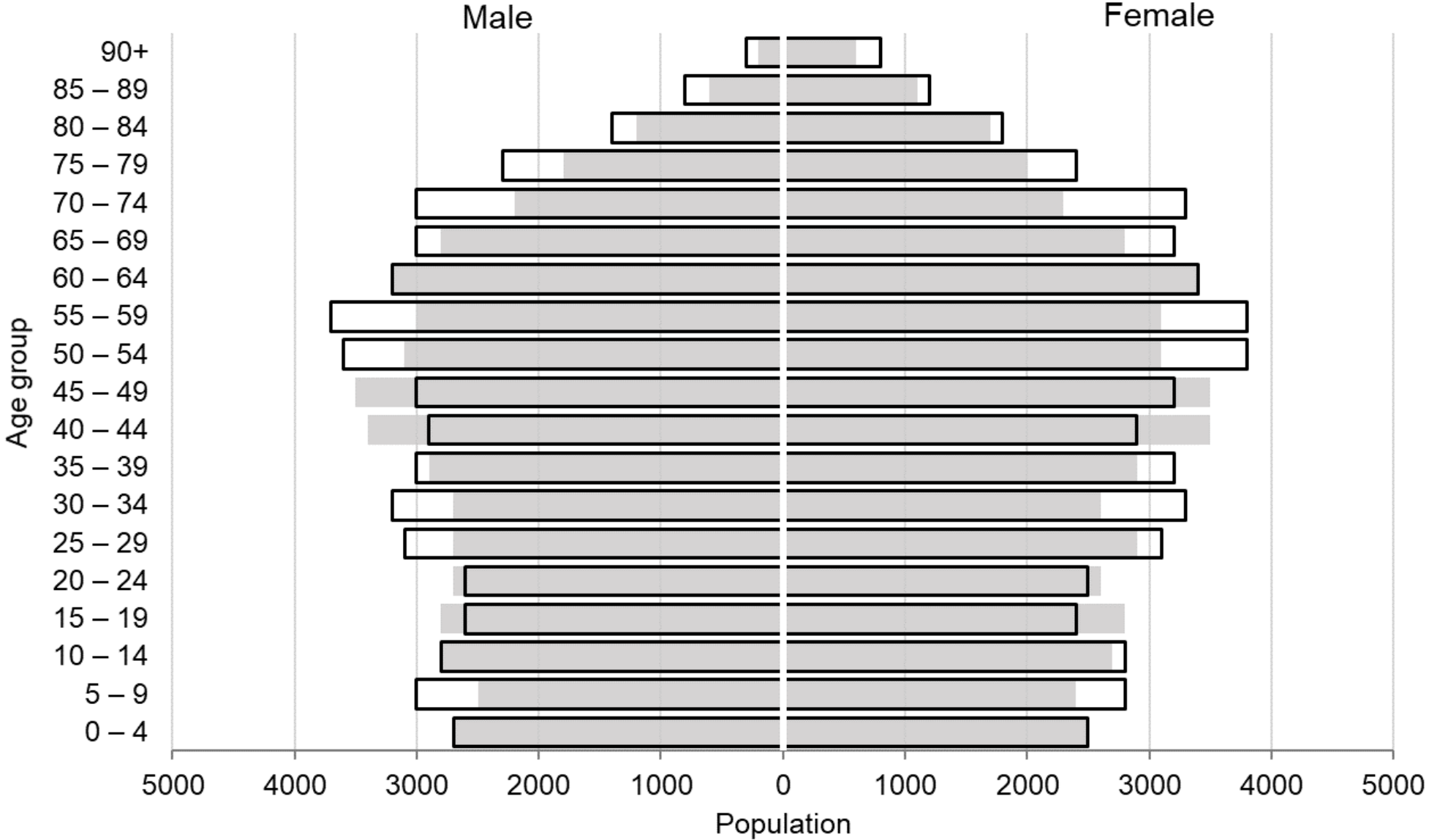
Comparison of East Cambridgeshire population estimates by age group



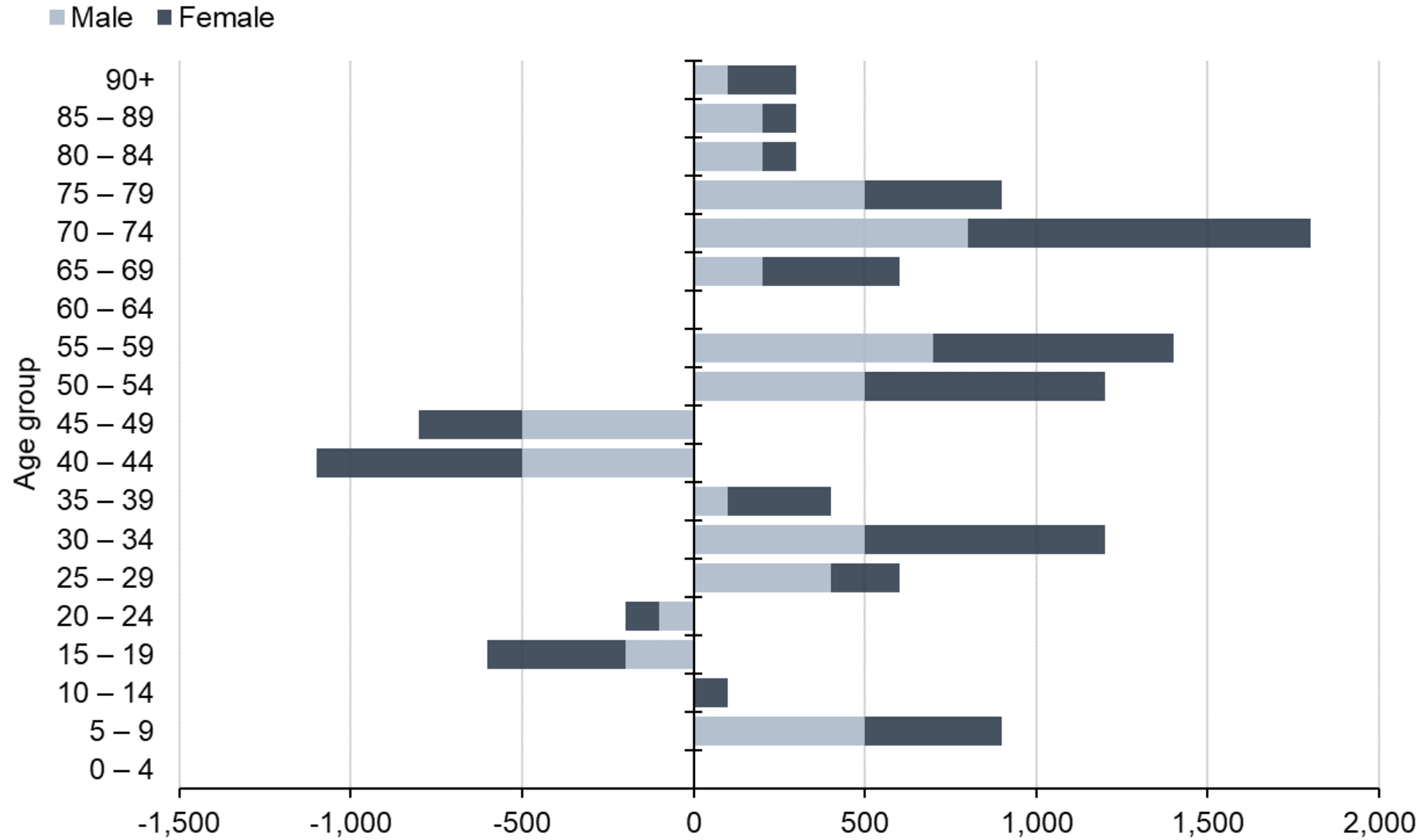
Fenland

Fenland Census 2021 and Census 2011 population by sex and age group

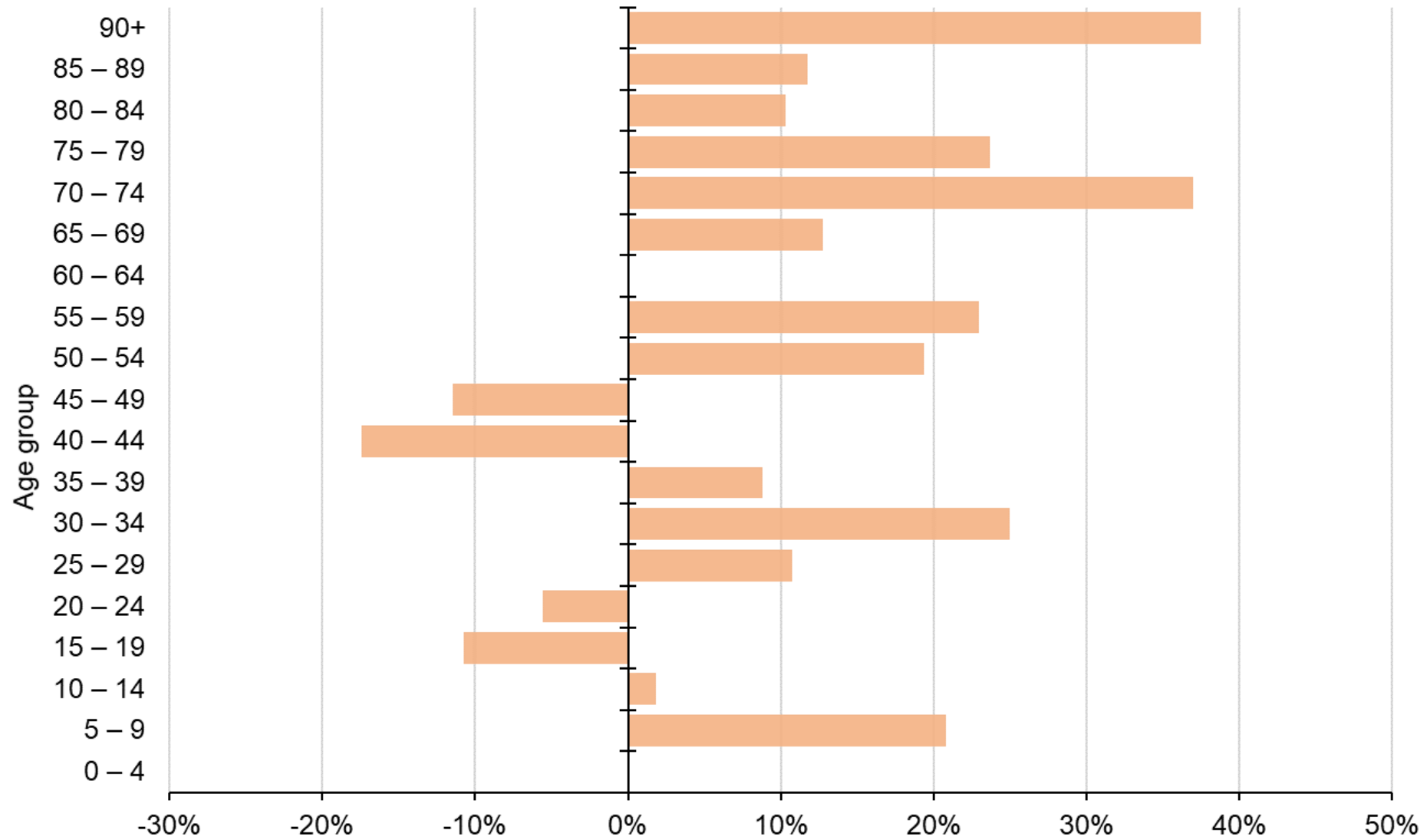
□ Census 2021 ■ Census 2011



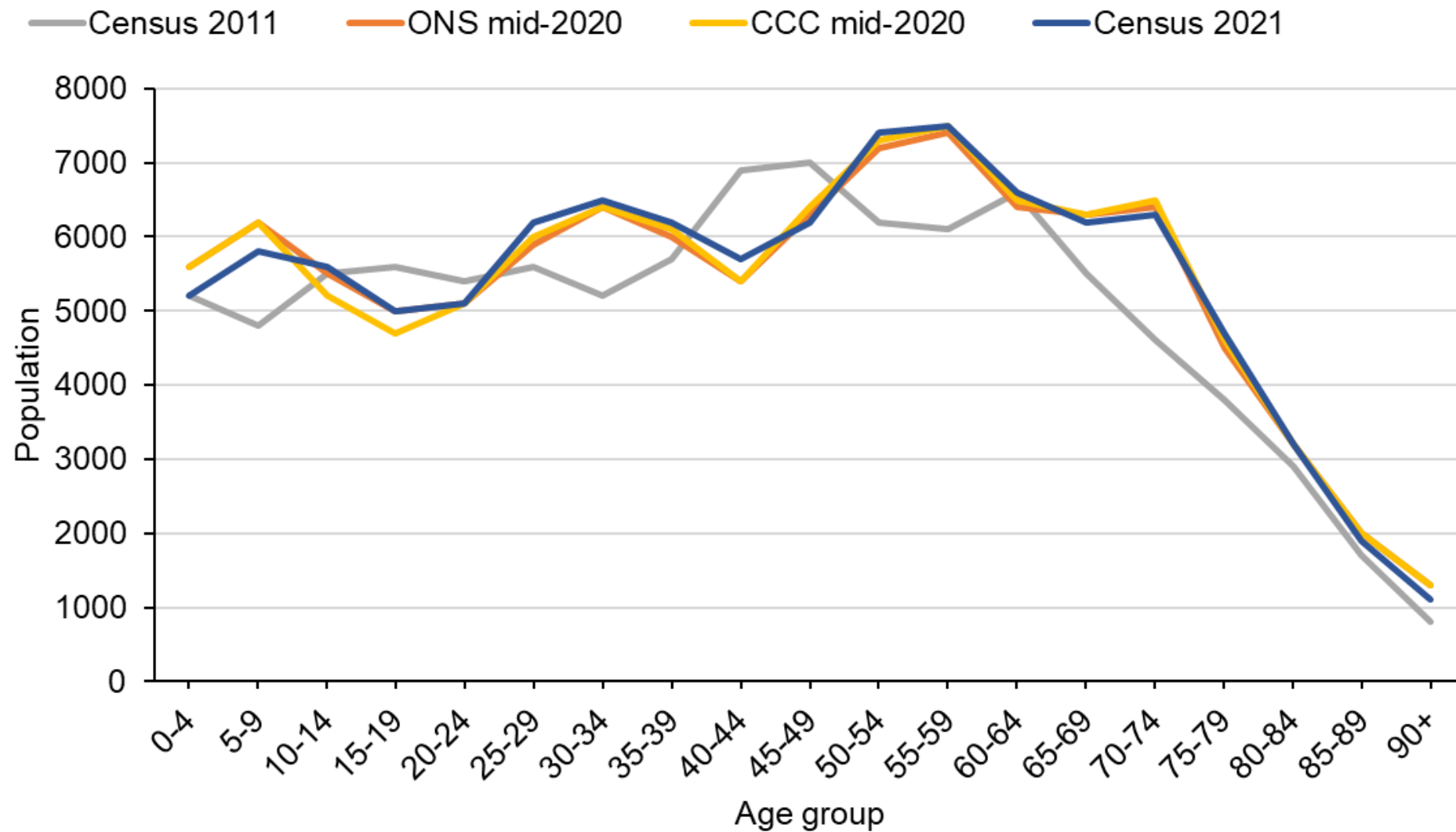
Change in Fenland population by sex and age group, Census 2011 to Census 2021



% change in Fenland population by age group, Census 2011 to Census 2021



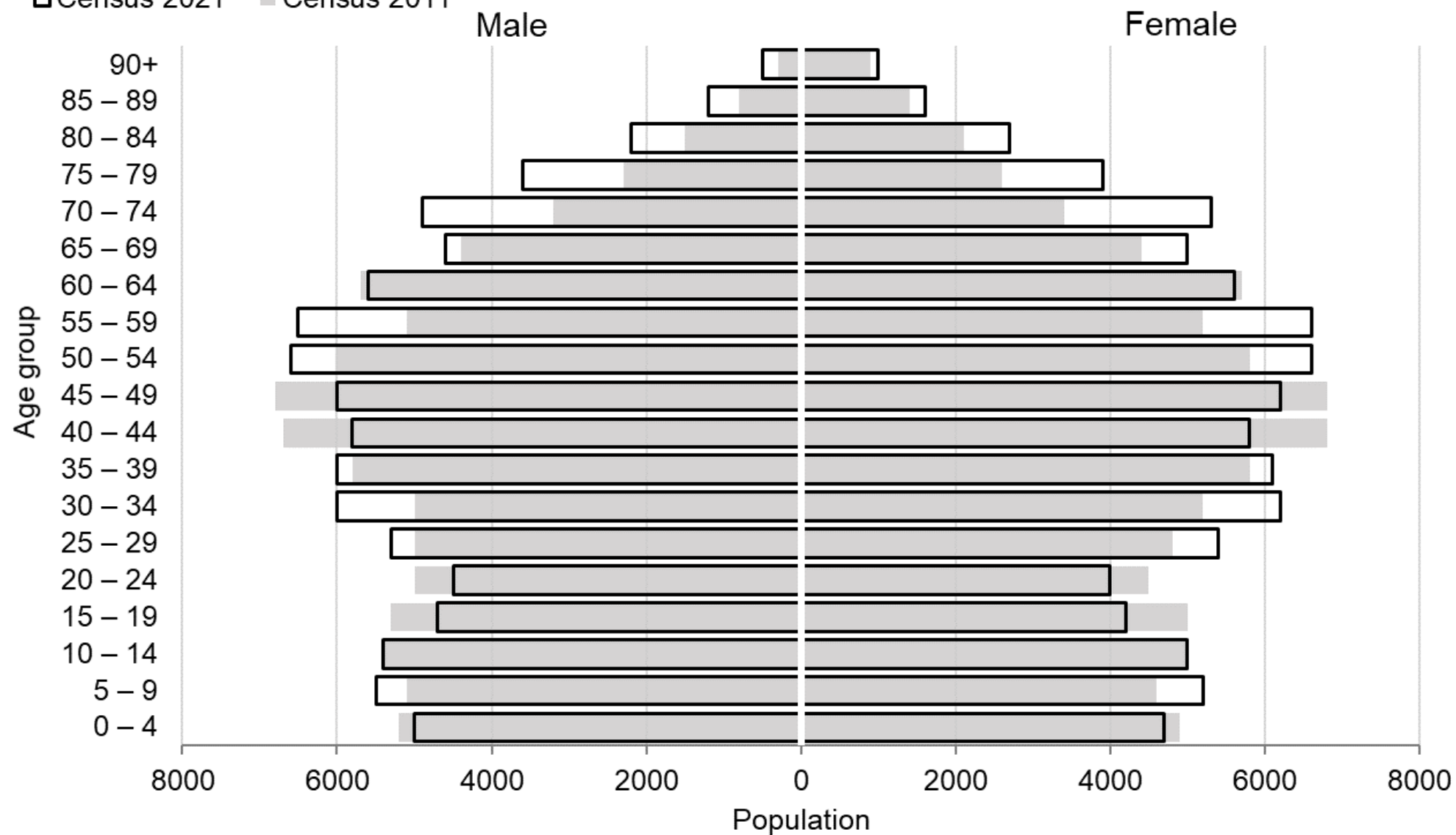
Comparison of Fenland population estimates by age group



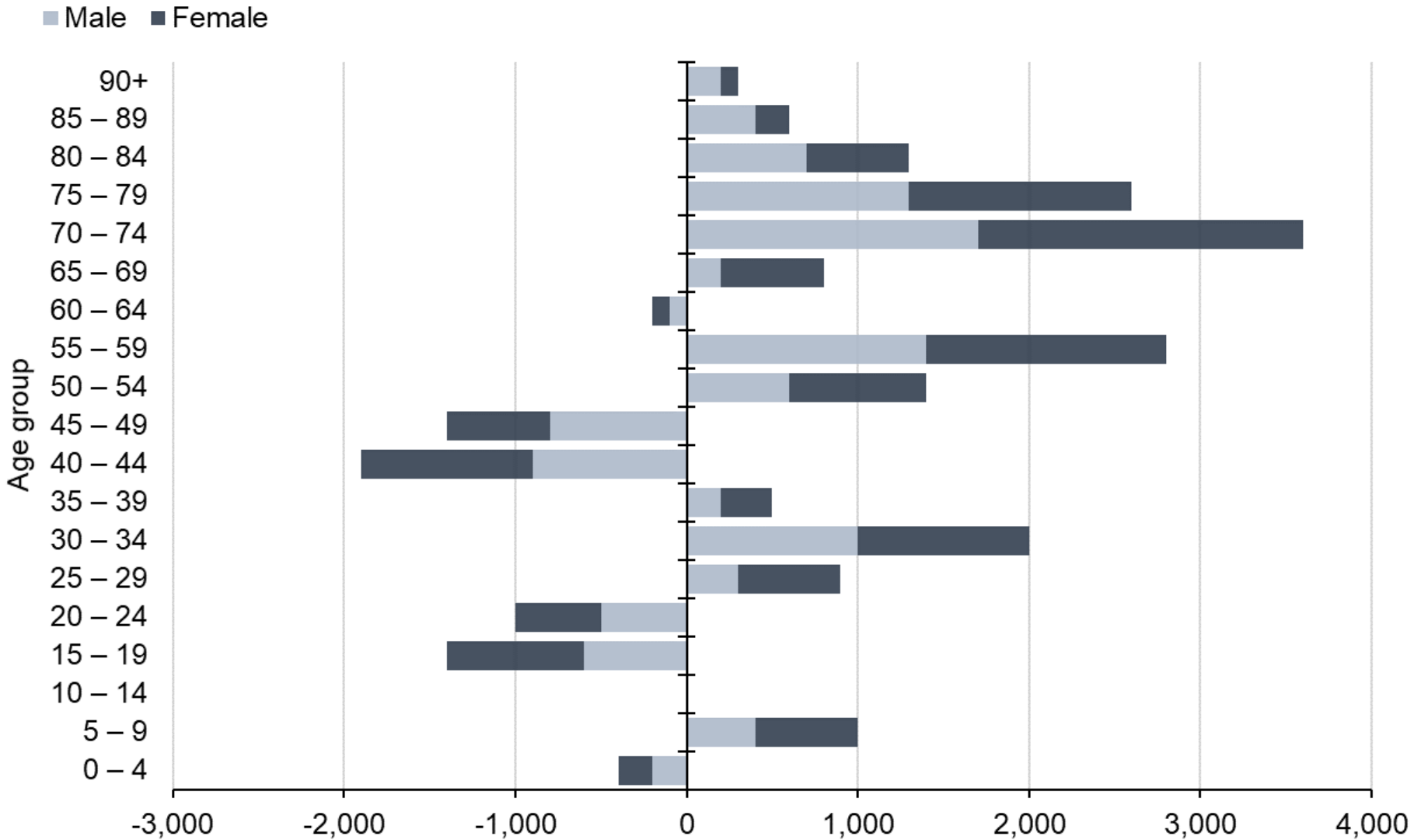
Huntingdonshire

Huntingdonshire Census 2021 and Census 2011 population by sex and age group

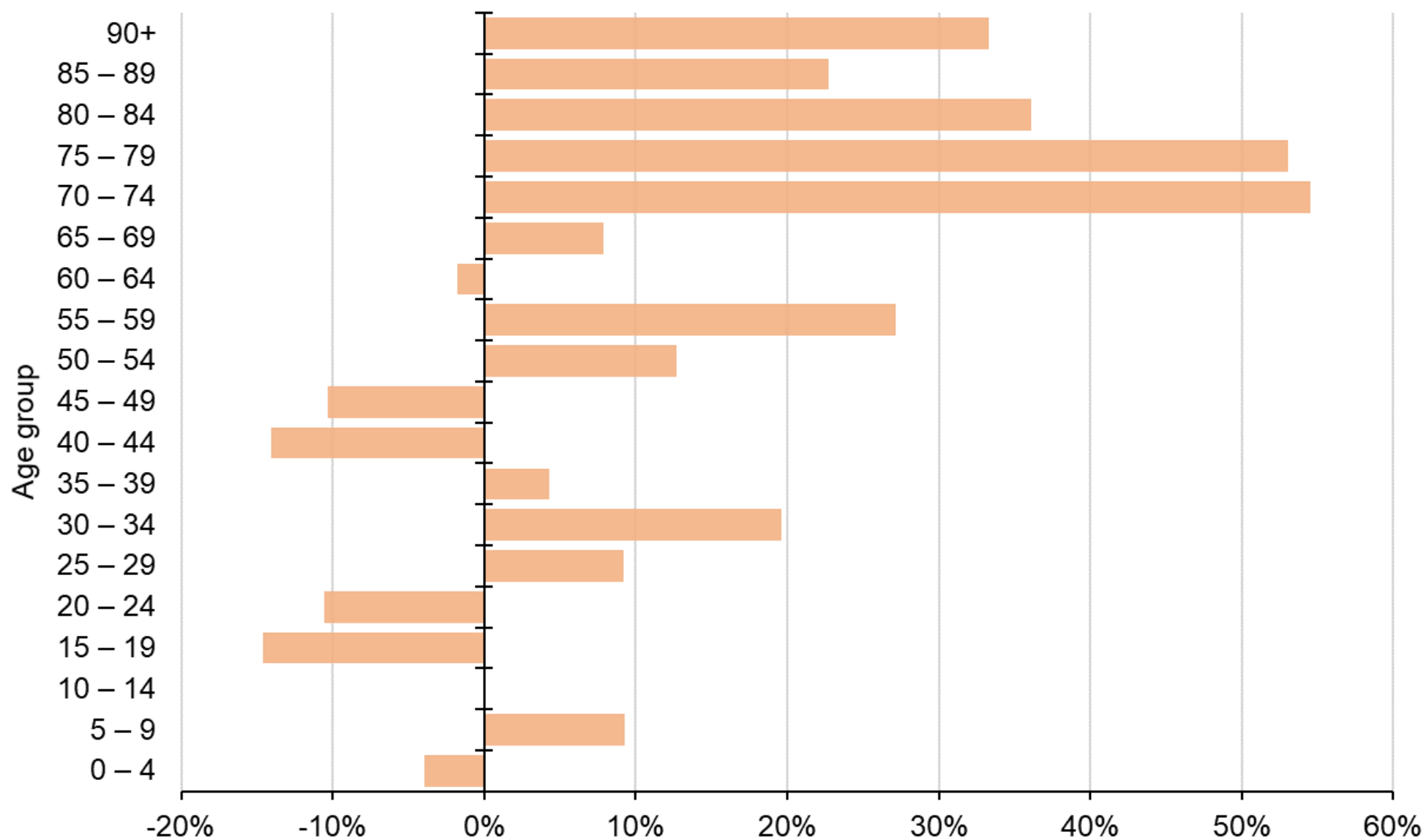
□ Census 2021 ■ Census 2011



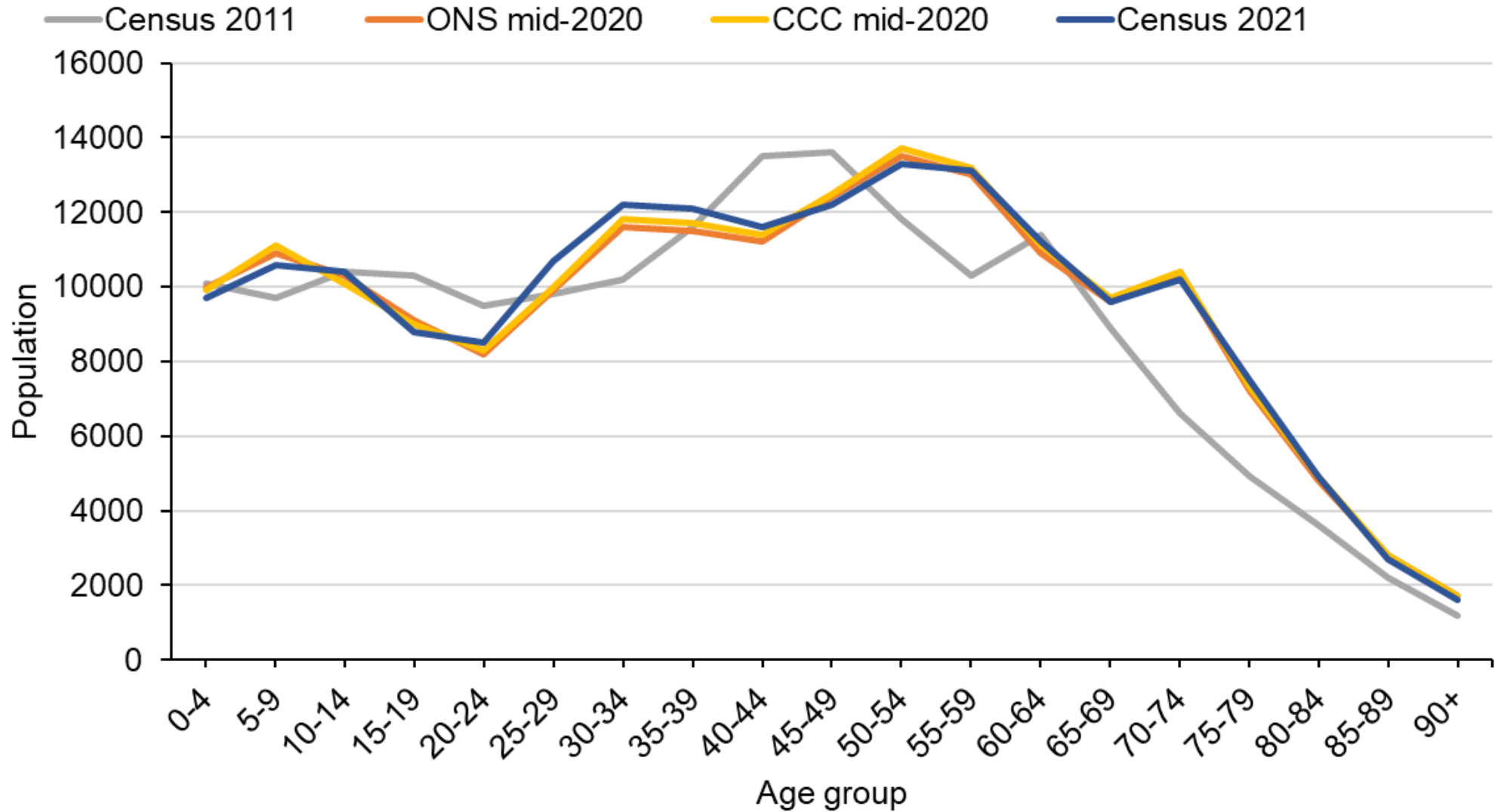
Change in Huntingdonshire population by sex and age group, Census 2011 to Census 2021



% change in Huntingdonshire population by age group, Census 2011 to Census 2021



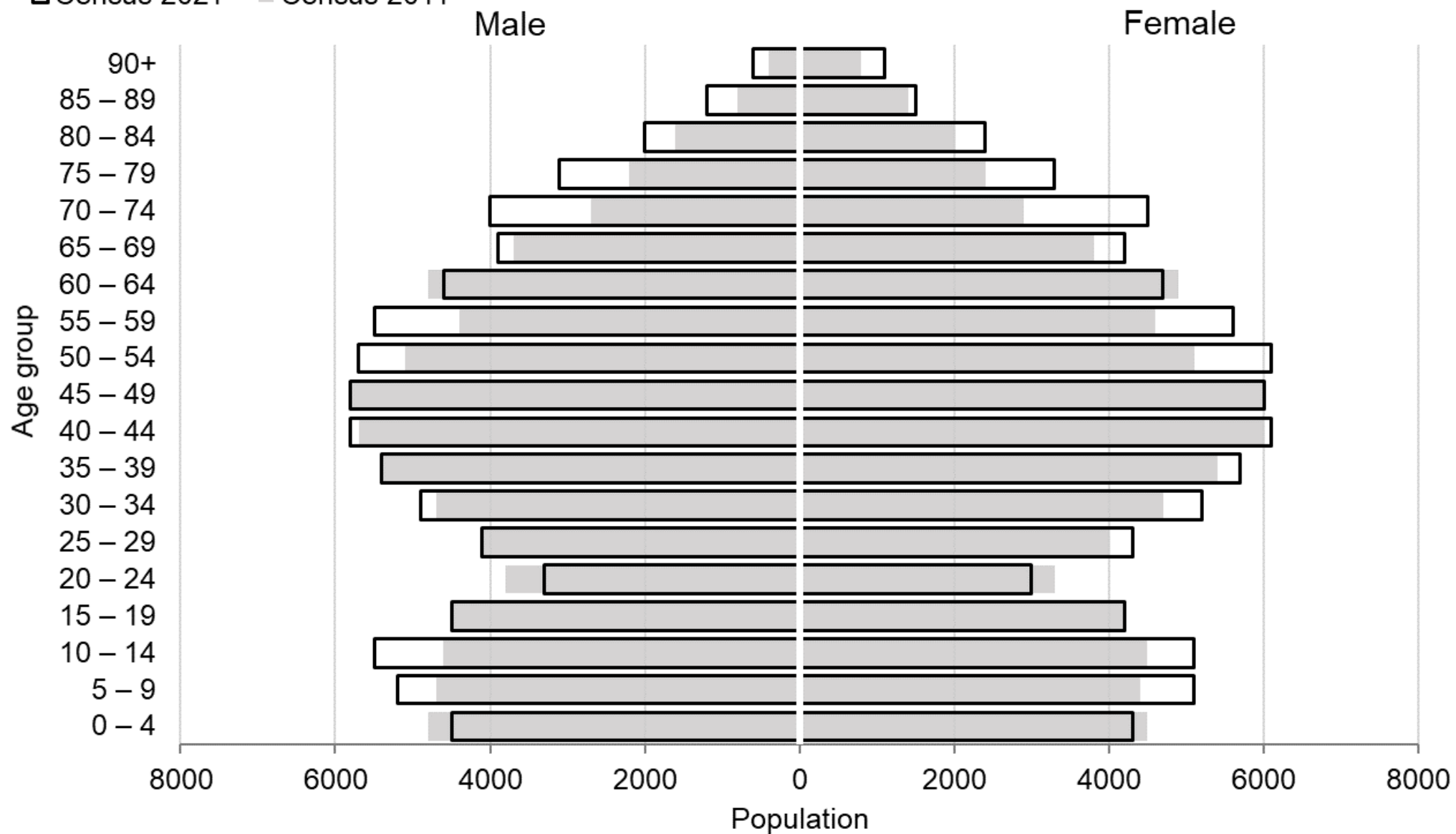
Comparison of Huntingdonshire population estimates by age group



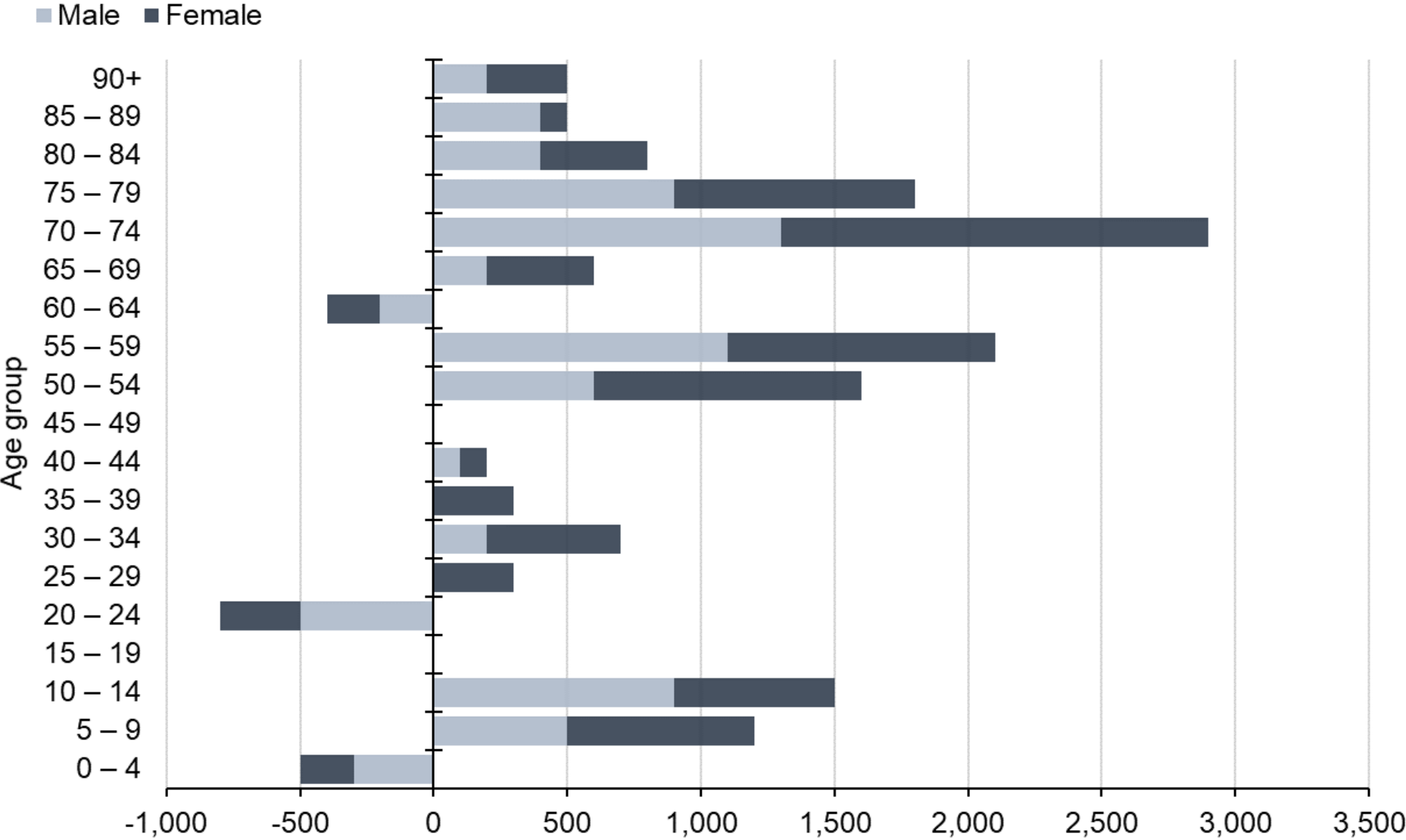
South Cambridgeshire

South Cambridgeshire Census 2021 and Census 2011 population by sex and age group

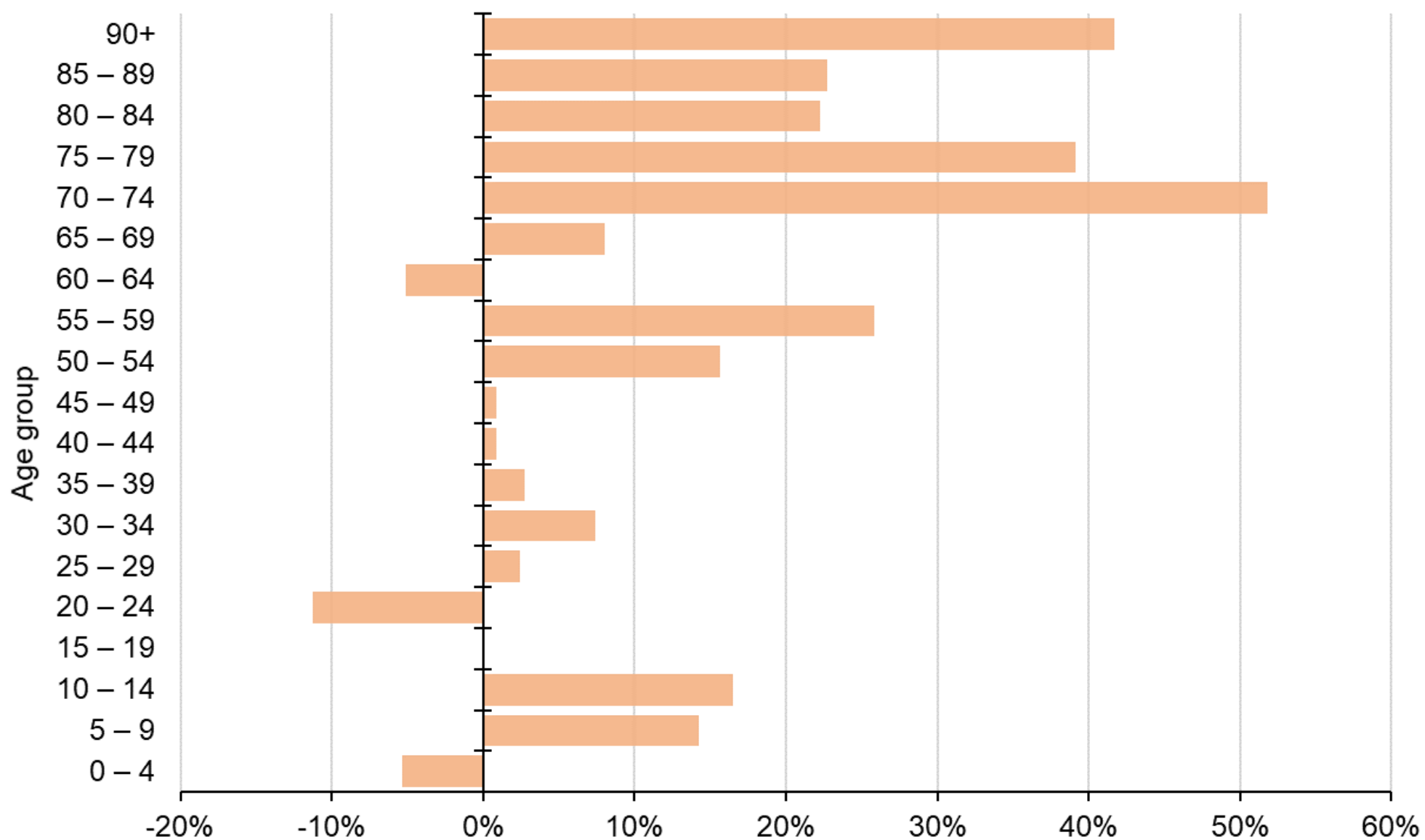
□ Census 2021 ■ Census 2011



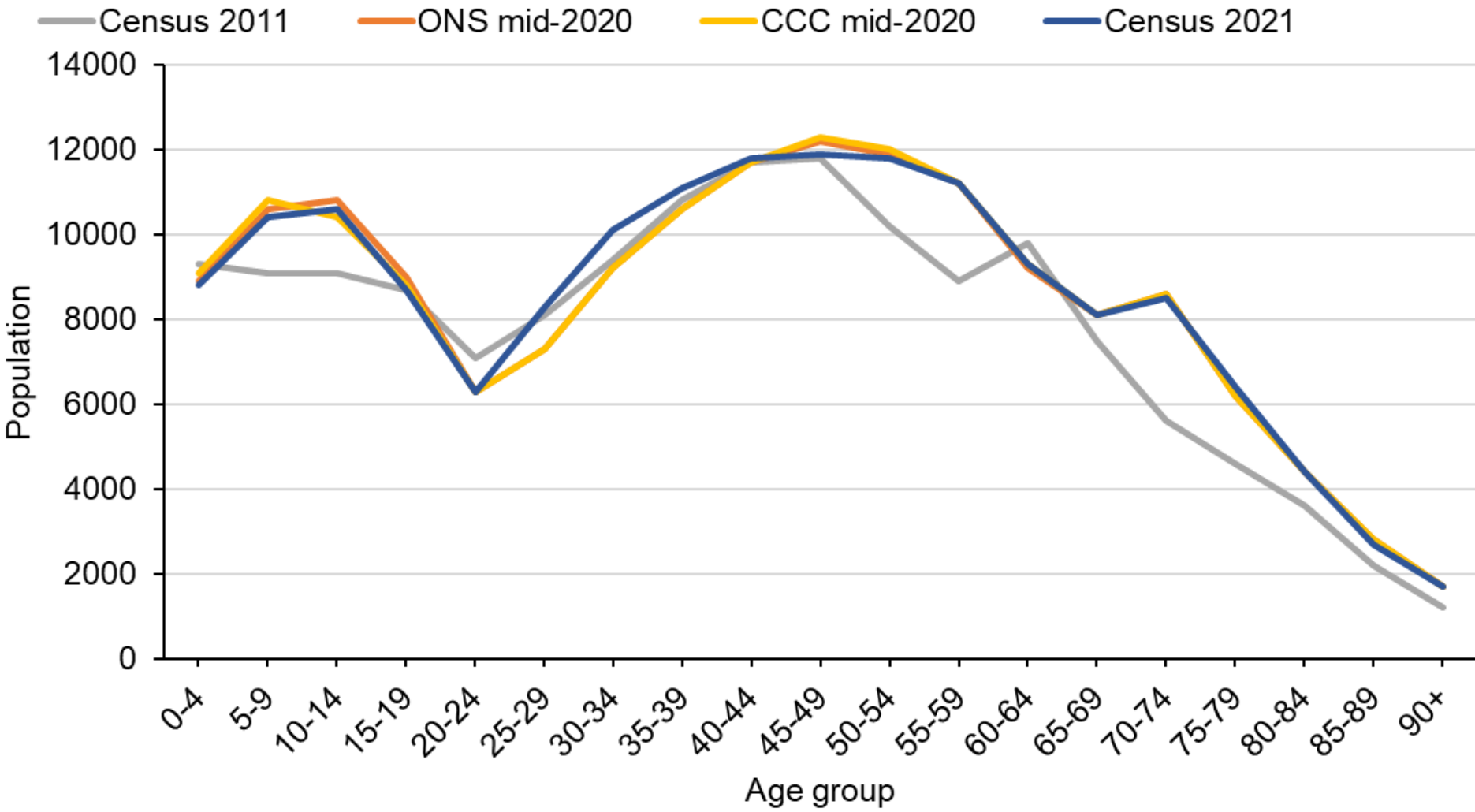
Change in South Cambridgeshire population by sex and age group, Census 2011 to Census 2021



% change in South Cambridgeshire population by age group, Census 2011 to Census 2021



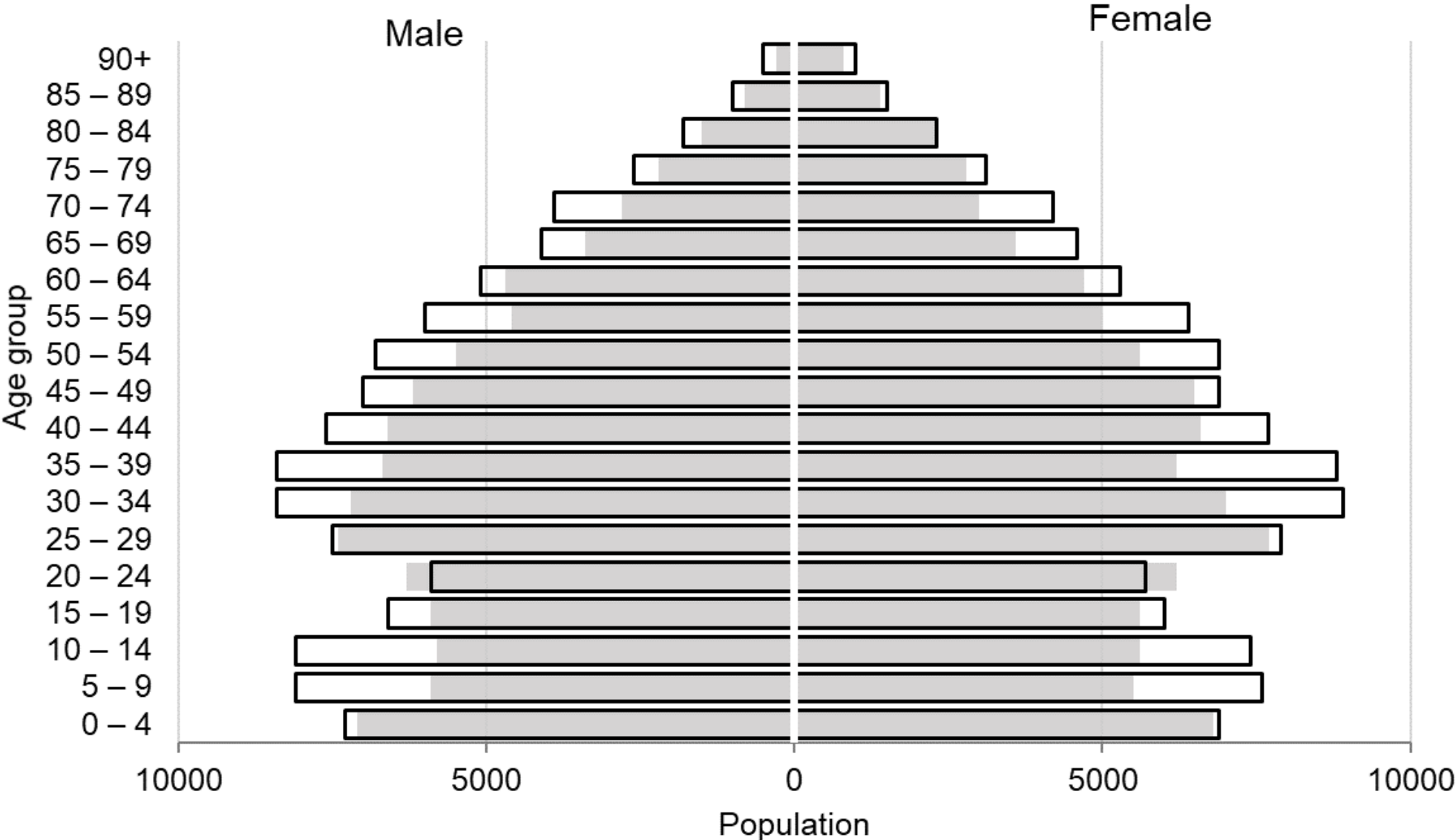
Comparison of South Cambridgeshire population estimates by age group



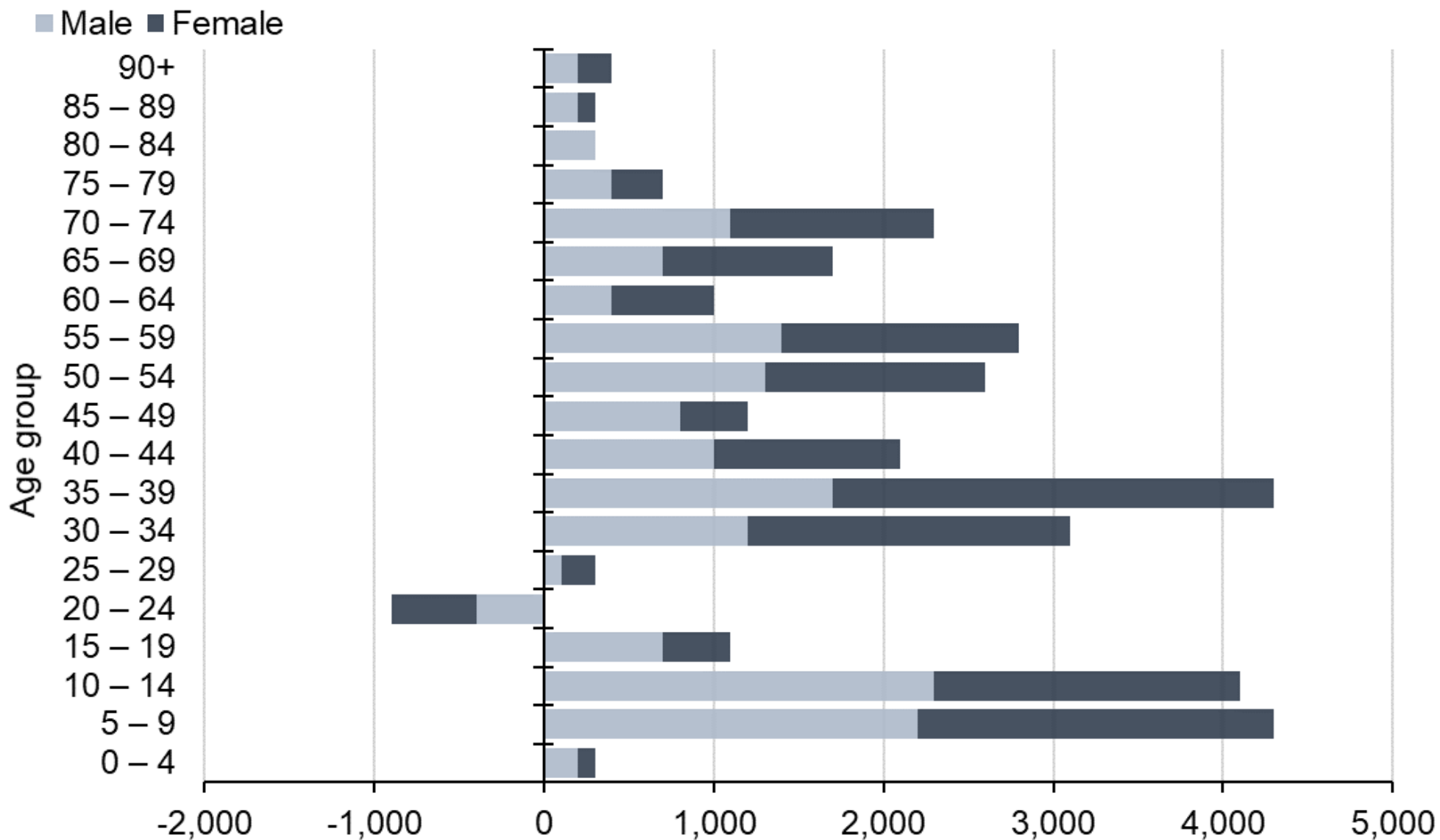
Peterborough

Peterborough Census 2021 and Census 2011 population by sex and age group

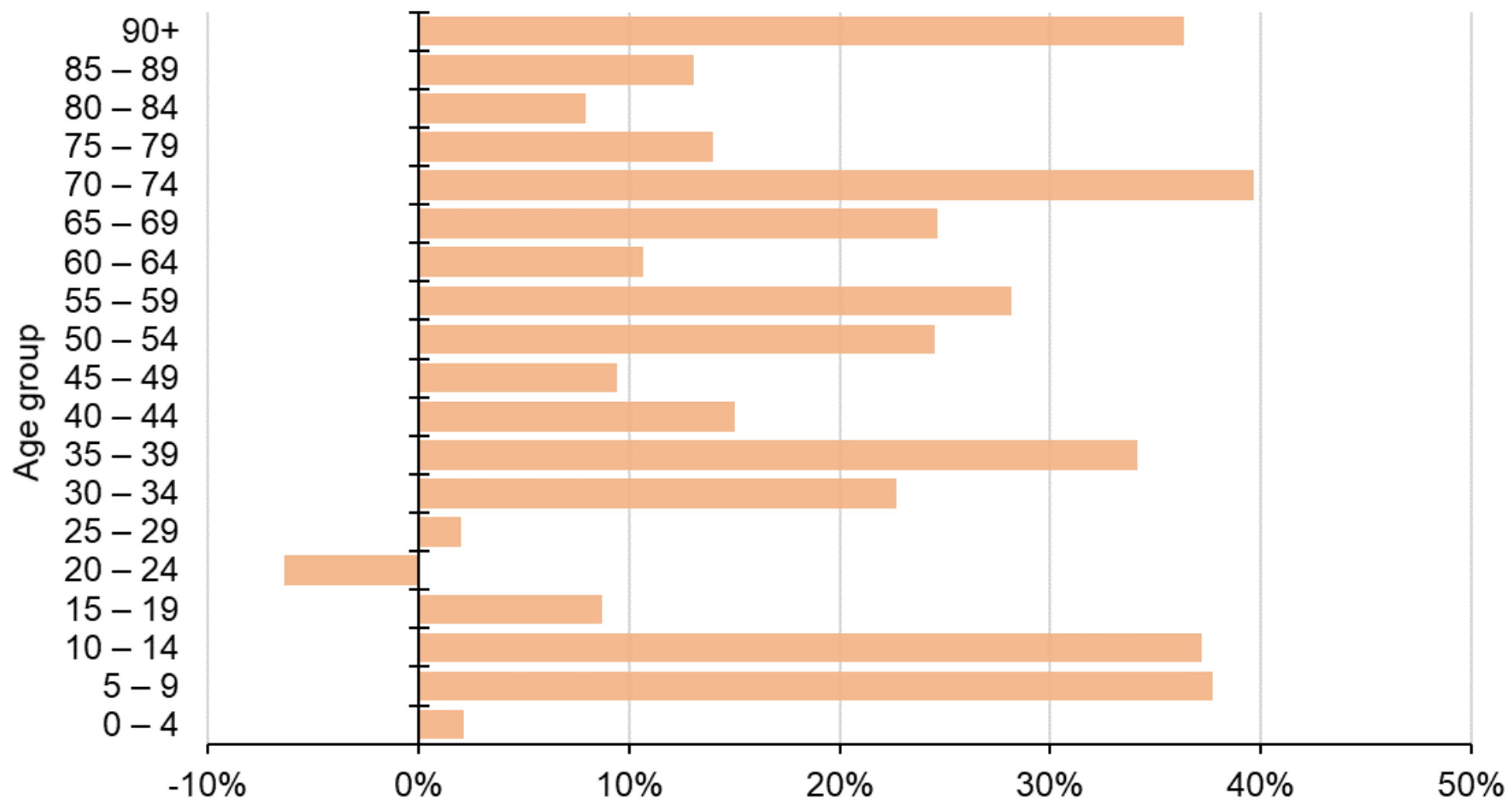
□ Census 2021 ■ Census 2011



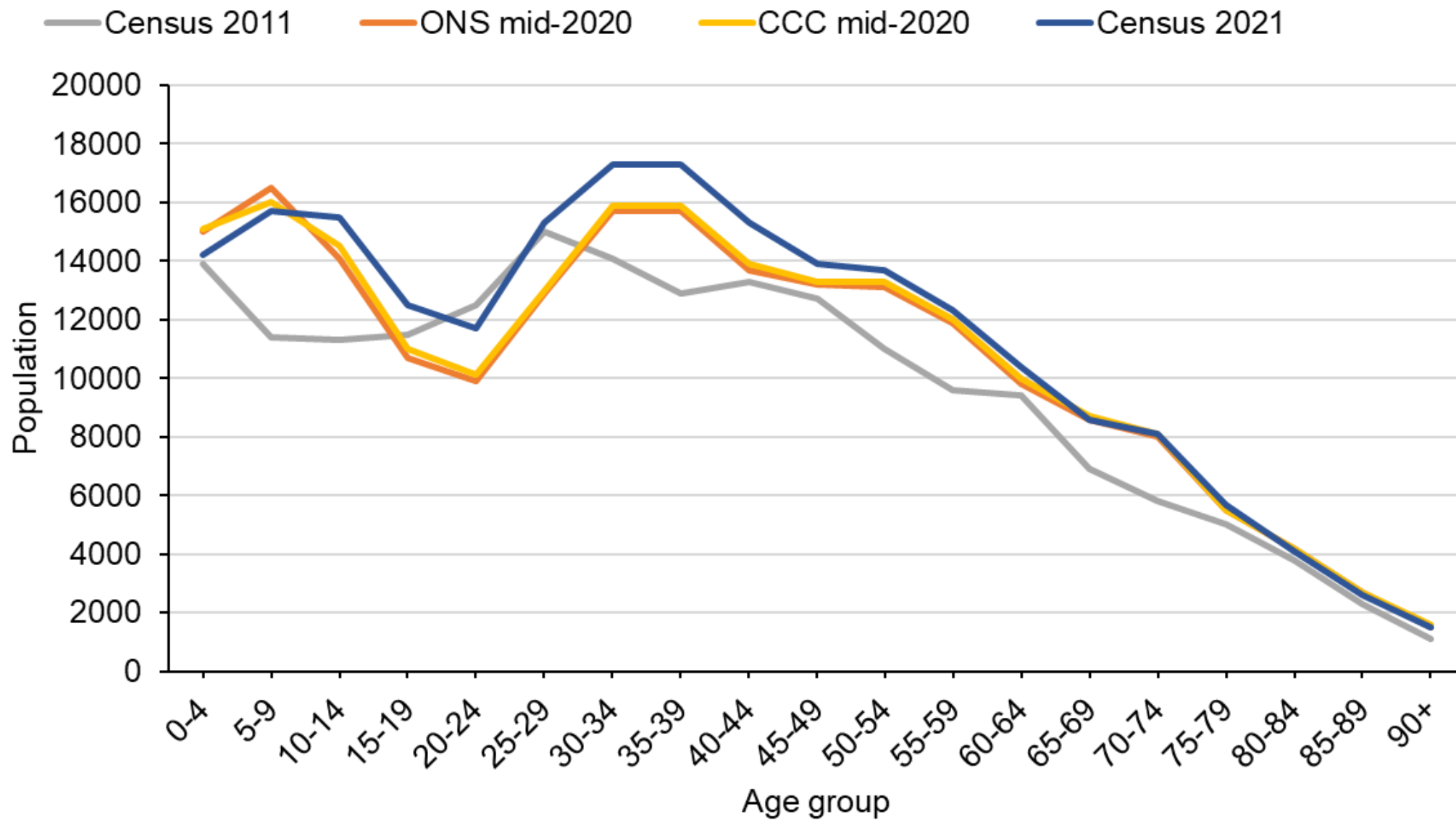
Change in Peterborough population by sex and age group, Census 2011 to Census 2021



% change in Peterborough population by age group, Census 2011 to Census 2021



Comparison of Peterborough population estimates by age group



Census 2021 population compared to population estimates

District	Census 2021	Census 2011	ONS Mid-2020	CCC Mid-2020	CCC Mid-2021
Cambridge	145,700	123,900	125,100	137,800	138,000
East					
Cambridgeshire	87,700	83,800	90,200	89,100	89,800
Fenland	102,500	95,300	102,100	102,400	102,900
Huntingdonshire	180,800	169,500	179,000	180,800	182,400
South					
Cambridgeshire	162,000	148,800	160,900	161,000	163,300
Peterborough	215,700	183,600	202,600	204,900	206,700