



**CAMBRIDGESHIRE
& PETERBOROUGH**
COMBINED AUTHORITY

ANNUAL REPORT 2022/2023



100% Electric. 0% Emissions.

Cambridge Welcomes 30
New Electric Buses

 **Stagecoach**

A proud partnership between

 **Stagecoach**  **GREATER
CAMBRIDGE
PARTNERSHIP**

 **CAMBRIDGESHIRE
& PETERBOROUGH
COMBINED AUTHORITY**  **HM Government**

CAMBRIDGE
UNIVERSITY
CAMBRIDGE

MADE TO BE
ELECTRIC

UK **BV23 NRX**

“

Over the next 12 months and beyond, we are aiming to make the region more economically and environmentally sustainable, leading to better health and wealth for all.

Contents

Welcome	4
Mayoral Pledges	6
About us	8
The Combined Authority Board	9
Strategic priorities	10
Economy & growth	13
Growth Works	14
Community Renewal Fund	16
Careers Hub	18
Education	21
Adult Education Budget	22
Multiply Bus	24
ARU Peterborough	26
Skills Bootcamps	28
North Cambridgeshire Training Centre	30
Place & Connectivity	33
Affordable Housing	34
Community-led Housing	36
Market Towns Funding Programme	38
Peterborough Station Quarter	40
Digital connectivity	41
Climate	45
Fenland SOIL	46
Local Nature Partnership	47
Transport	51
Active Travel	54
TING	55
King's Dyke	55
A1260 safety and improvement project	56
ZEBRA buses	60
Cambridge South Station	61
March Area Transport Study and Market Towns Programme	62

Welcome

Mayor's foreword

Welcome to the Cambridgeshire and Peterborough Combined Authority Annual Report 2022-23.



We hope this report will be interesting reading on what we have achieved in the past year, as we move forward with our ambition to deliver good growth for the region.

After a period away to receive medical treatment, I feel energised and with clear focus on delivering a more prosperous Cambridgeshire and Peterborough. One that is more equitable, more environmentally sustainable and that enables good growth for its residents and businesses.

I have received so much support over the past few months and I want to thank all the Combined Authority Board members for maintaining focus on delivery of our priorities. I want to thank Councillor Anna Smith, in particular, for temporarily leading the Combined Authority and the commitment to public service she demonstrated by taking on the role in addition to being Leader of Cambridge City Council.

As Mayor, I want to leave a legacy that continues for years to come including improved life expectancy for the people who live here and for those additional years lived to be in good health and wealth.

The enduring impact of the remainder of my term will be to reduce inequality, have sustainable growth, and more active communities, within a region that celebrates and further enhances its uniqueness on both the local and global stage.





Mayoral Pledges

A locally determined, innovative, and sustainable public transport system that is fit for the future

Promote, protect, and grow our unique Fens

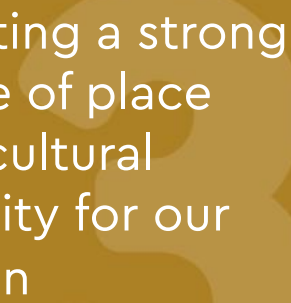
This has been a year of taking stock and strengthening our relationships with our partners. We are pleased to say our Corporate Strategy for the year ahead was accepted unanimously at the January Combined Authority Board.

We are excited at the opportunities that lie ahead as we look to 2023/2024.

The 2017 Devolution for the region focused on delivering economic growth, enhancing the region's international reputation, accelerating housing growth to meet demand, using strong public service partnerships, achieving a skills base to match business need,

and providing connectivity and transport systems fit for modern day working and living. Going forward, the Combined Authority will work with partners to consider deeper devolution deals for the region, with more powers to make change locally.

Over the next 12 months and beyond, we are aiming to make the region more economically and environmentally sustainable, leading to better health and wealth for all.



Creating a strong sense of place and cultural identity for our region

This will include greener buses, more active travel initiatives and projects supporting the environment such as action to tackle impact on chalk streams. We want to better connect our communities, both digitally and physically, with improvements to our cycle network, roads, rail, and buses, and ensuring all residents have access to reliable broadband.

Crucially, we are aiming to ensure our communities are resilient, both now and in the future, with delivery programmes such as Green Homes and Net Zero Hub Sustainable Warmth focused on mitigating the climate crisis impact, increasing the safety of traveling in our region and celebrating our cultural identities.



Working with Integrated Care Systems to support the delivery of better health outcomes and address health inequalities in our region

And we want to hear from you. We want you to email us, talk to us at our events and take part in our surveys so that we can hear what change means to you and your families. The Combined Authority exists to make your lives better, and in partnership with all our local authorities, we will continue to deliver on projects and initiatives that do just that.

We hope that you enjoy reading our Annual Report and seeing the ways in which we are working to ensure that the people of Cambridgeshire and Peterborough live fair and fulfilling lives with better transport, exciting job opportunities and good health.

About us

The Cambridgeshire & Peterborough Combined Authority mission is to make life better, healthier, and fairer for all.

We grow the local economy and improve lives by helping to boost growth, increasing access to education and employment, and providing reliable and affordable public transport and housing. We look out for the interests of the region by nurturing homegrown innovation and protecting the climate and our unique biodiversity.

The Cambridgeshire & Peterborough Combined Authority was set up by a Devolution Deal from government in 2017 with a key goal of doubling economic output by 2050.

With devolved power for transport, housing and infrastructure funds, investment funding allocation and post-19 skills provision, the Mayor and the Combined Authority seek to utilise these powers to deliver 'good' growth for the region.



The Combined Authority works in partnership with the seven local authorities, the NHS, businesses and community groups and organisations across the region to deliver its ambitions for the area.

The authority is chaired by an elected Mayor, Nik Johnson. It comprises of a Business Board and the seven local authorities:

Cambridge City Council

Cambridgeshire County Council

South Cambridgeshire District Council

East Cambridgeshire District Council

Fenland District Council

Huntingdonshire District Council

Peterborough City

The Combined Authority Board

The Combined Authority's Board brings together the leaders of the seven councils across the region and the Chair of the Business Board under the Chairmanship of the directly elected Mayor.

It is also attended by the Police and Crime Commissioner, the Chairman of the Fire Authority, and a representative of the National Health Service.

The Board members



Anna Bailey



Chris Boden



Sarah Conboy



Wayne Fitzgerald



Lucy Nethsingha



Anna Smith



Bridget Smith



Mayor Nik Johnson

Strategic priorities

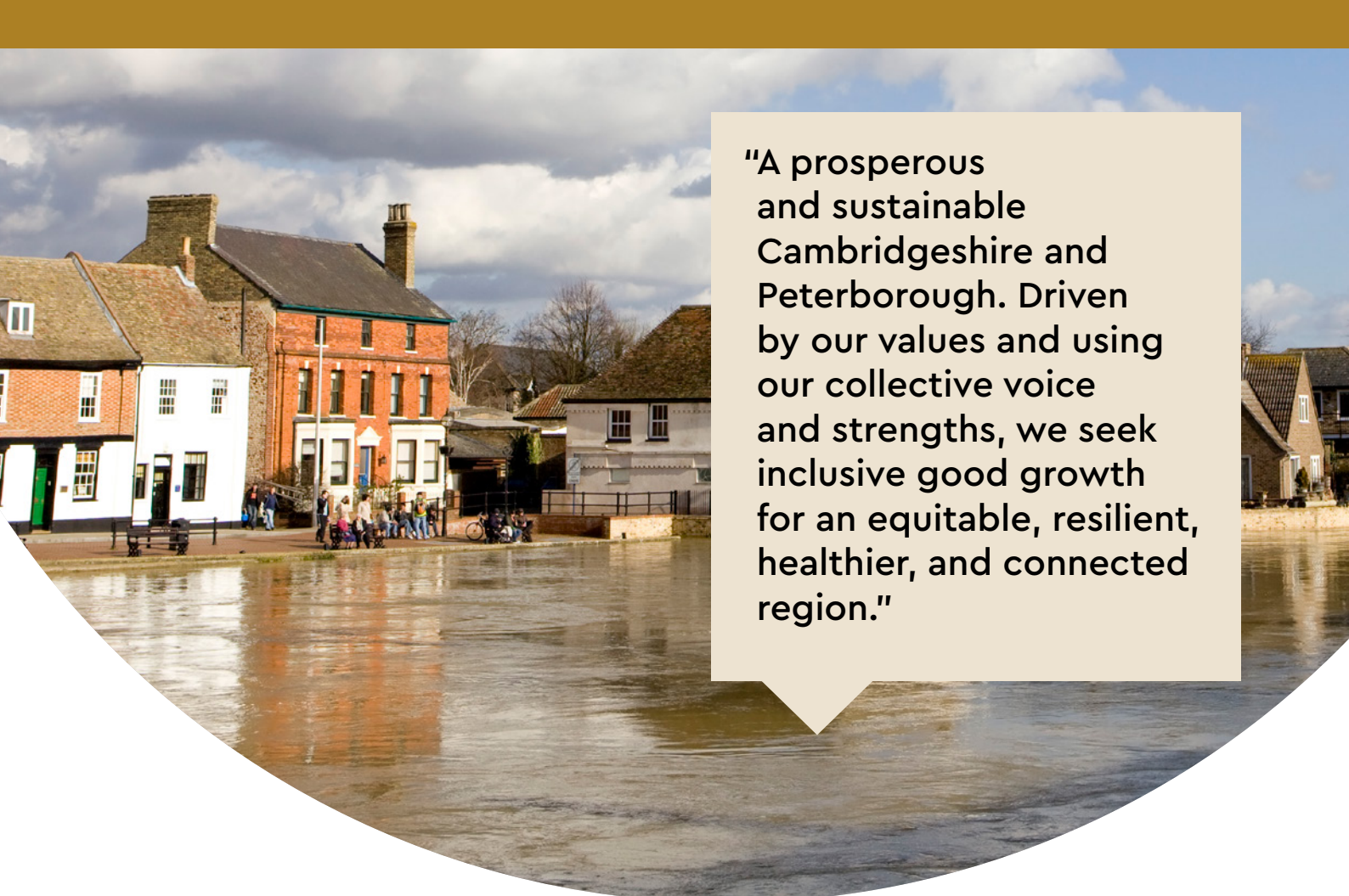
Our strategic priorities clarify the areas of focus to 2025. These priorities are supported by a strong strategic framework that ensures all delivery is assessed by its impact and contribution to climate and nature, health, infrastructure, innovation and reducing inequalities.

Achieving Good Growth

Reduce inequality between and within Greater Cambridge, The Fens, and Greater Peterborough, whilst increasing productivity, delivering our goal of almost doubling GVA by 2040.

Increased Connectivity

Digital and physical connection to communities, professional networks, health services, leisure, nature and to places of employment and education.



"A prosperous and sustainable Cambridgeshire and Peterborough. Driven by our values and using our collective voice and strengths, we seek inclusive good growth for an equitable, resilient, healthier, and connected region."

Ambitious Skills and Employment Opportunities

Inclusive and world-class local skills system that raises the ambitions, matches the needs of our employers, learners, and communities to enable a successful, globally competitive economy offering high-skilled, well-paid and good quality jobs to deliver increased productivity and prosperity for our communities.

Enabling Resilient Communities

Providing the infrastructure and support to enable communities across the region to be adaptable to environmental and climate, financial and social crises and be well placed to extend cultural opportunities for Cambridgeshire and Peterborough to be a great place to live and work.





Economy & growth

Growth Works

Growth Works, set up by the Combined Authority and Business Board, brings together four services to improve business growth, skills and the economy in Cambridgeshire and Peterborough.

Growth Works offers a business coaching service to help some of the region's fastest growing enterprises to expand and adapt. Its skills service links people with both training and employers, supporting them on pathways to great careers. As well as an equity service, investing into growing enterprises, Growth Works also has an inward investment team set up to attract businesses from around the world to locate in the region.

Since January 2023 it has been in its third year of delivery. The service was launched formally during the Covid-19 pandemic, and since then a series of major economic challenges like inflation, war and a cost of living crisis has been a huge challenge to economic and jobs growth. Despite this, Growth Works has still managed to exceed many of its targets.

Key achievements April 2022 – March 2023

2,000+
jobs created

251
Apprenticeships

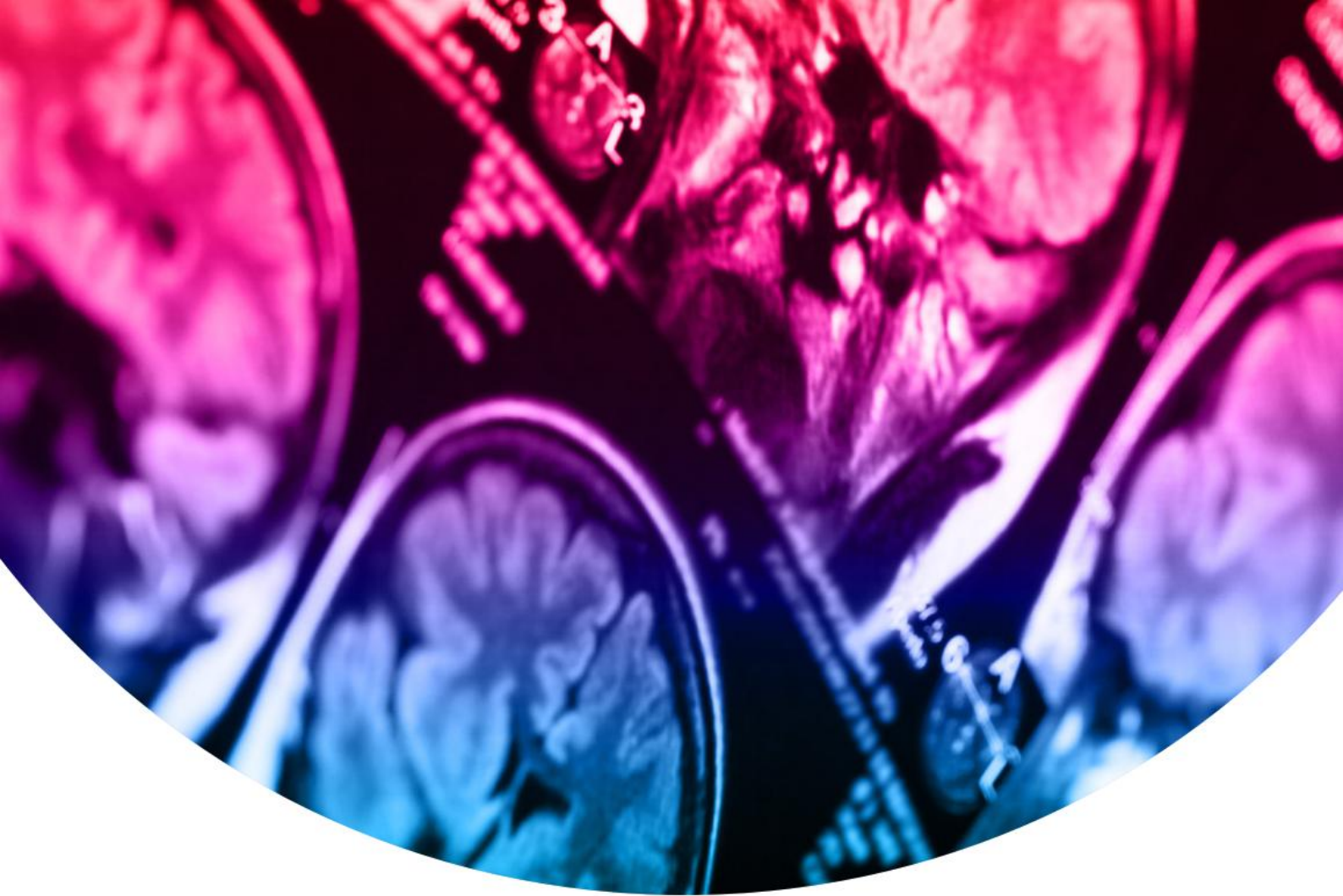
1,077
companies
provided with a
Growth Diagnostic

£700k
in revenue growth
grants awarded

£4.4m
in capital grants to
SMEs, stimulating a
further £10 million
match capital
investment

610
People upskilled

327
Companies in the
inward investment
pipeline



Case Study – Quibim

Following support from Growth Works, Quibim, a global leader in medical imaging, has located to the Bradfield Centre at Cambridge Science Park, with a commitment to create more than 10 jobs over the next few years.

The Growth Works Business Growth Service launched an international market access programme for life sciences companies around the world that were looking to scale and grow into new markets. This was run through its international inward investment brand, Locate Cambridge. This programme was oversubscribed, and 10 companies out of more than 30 applicants were shortlisted to pitch to a panel of experts to facilitate and accelerate the companies' journey into the region.

Collectively, the Growth Works programme through its Locate Cambridge Brand and its strategic partner, Eastern Academic Health Science Network, which is funded by the NHS and the Government's Office for Life Sciences, supported Quibim in its decision to locate in Cambridge rather than other parts of the UK. The access to skills, innovation partners and access to capital also contributed to their decision to invest.

Community Renewal Fund

In November 2021, the Combined Authority was successful in bidding for £3.4 million from the government's Community Renewal Fund.

The funding was split between two schemes: Start and Grow and Turning Point, which have now completed.

Our Start and Grow project, received £2,529,600 and has supported people to start and grow businesses, while Turning Point received £864,251 and has helped unemployed people into work. Both projects covered Fenland and Peterborough – areas which were identified as being most impacted by the Covid-19 pandemic. Start and Grow also covered Huntingdonshire.

Key achievements April 2022 – March 2023

292

Start and Grow grants were issued, resulting in the creation of 103 new business start-ups, the creation of 119 new jobs and 49 new jobs safeguarded.

101 learners

to gain a new qualification while supporting over 2000 people to engage in job-searching.



One learner from Peterborough has secured a contract at Millwall FC following a Combined Authority funded course at Turning Point.

"I have been offered an 11-month contract at Millwall FC doing video scouting I'm very pleased... I am really appreciative for all the support I have had over the last couple months, things are really starting to turn around for me now! I wouldn't go as far as to say famous but hopefully something really comes of this down the line and I can progress even further!"

Careers Hub

The Careers Hub is a trailblazing service which aims to deliver high quality careers education in both primary and secondary schools across the region.

It brings together schools, employers, and the wider education sector to support and inspire young people in what kind of careers they could have in the future. From direct connections with employers in the region from a range of sectors, to being shown the skills pathways they could follow to achieve their dreams, the Careers Hub is helping more young people to reach their potential and reduce the number of children leaving school not in employment, education, or training.

Enterprise Co-ordinators operate in clusters of schools, including provision for special educational needs and disabilities (SEND) and alternative education. They support careers leaders within schools to develop careers education in schools and support a group of senior business volunteers, known as Enterprise Advisers, who are matched with schools.

The Careers Hub is a partnership between the Combined Authority and the Careers and Enterprise Company. It aligns with the Combined Authority's wider skills ambition to create an 'all age' careers service for Cambridgeshire and Peterborough.

Key achievements April 2022 – March 2023

June 2022

Funding secured for expansion of Careers Hub from 30 to 72 secondary schools in the region.

March 2023

Formal launch of Careers Hub with conference at ARU Peterborough

January 2023

Careers Hub chosen as one of four trailblazer projects nationally to extend the scope of the work to 75 primary schools across the region.

First year

All secondary schools in the region have been part of the Careers Hub.



The Combined Authority was selected as one of four trailblazers to deliver an innovative pilot project to inspire primary school-age children in the kinds of jobs they could do in the future and the skills they will need.

The funding was awarded by the Careers and Enterprise Company and will extend the scope of the Cambridgeshire & Peterborough Careers Hub, which already works with all eligible secondary schools in the region to help raise children's aspirations in terms of their future careers.

The Careers Hub is a partnership between the Combined Authority and the Careers and Enterprise Company. The Combined Authority is one of four pilots running which will trailblaze the £2.6 million national scheme.

Studies show that children start to form ideas about their future as they start primary school. But it has also been shown that as early as age six, children can adopt limiting stereotypes based on gender, ethnicity, and social background. By age nine, children even can start to drop their biggest ambitions.

The pilot is designed to increase the awareness primary-aged children have of the kinds of work they could do when they grow up, raising aspirations and reducing stereotypes.

The opportunity is open to 75 primary schools from across the region. It will involve support from the Careers Hub, free professional training for teachers delivered by Teach First, and access to additional resources to help in the classroom. The programme will involve putting careers in the curriculum, include interactions with employers and will engage parents.

The project aligns with the Combined Authority's wider ambition to create an 'all age' careers service, giving people at any stage of life better awareness and access to opportunities to increase their skills and improve job opportunities. It also supports the aim to reduce skills shortages in the local economy, linking education closer to employers.



Education

Adult Education Budget



Devolution of the Adult Education Budget (AEB) from 1st August 2019 has enabled the Cambridgeshire & Peterborough Combined Authority to take responsibility for delivering high quality Adult Education in the local area.

Education and training courses for adults aged 19+ in England are funded through the Adult Education Budget (AEB).

From August 2019, this was devolved by central Government to the **Cambridgeshire & Peterborough Combined Authority**. This means we can decide locally how we spend and use the £11.9m budget that we get every year to improve opportunities and life chances of residents.

Case study – Margaret Humphrey

Margaret Humphrey is getting set to begin studying Medicine this month at the prestigious Cambridge University after completing a yearlong Access to Medicine course at College of West Anglia, funded by the Combined Authority.

She took the lesser-known route to Medicine after discovering a passion for the subject while working in Addenbrookes A&E department for four years.

"I'm really excited to start my course at Cambridge University," Margaret said. "I started working at Addenbrookes while studying for my Performing Arts degree from Anglia Ruskin; working within the A&E department sparked a love for healthcare and medicine."

Access to Higher Education courses, such as the Access to Medicine course which Margaret completed, are designed to help adults prepare for higher education and are an alternative to the traditional route into undergraduate study.

The Combined Authority are responsible for ensuring high quality adult education is available for Cambridgeshire and Peterborough residents including funding Access to Higher Education courses since 2019 to the tune of over half a million pounds.

The primary purpose of the Authority's Adult Education Budget is to provide adults with the skills and learning needed for work. In addition, it also provides employability skills including communication, self-confidence, and attitude to work to enable people to contribute to thrive within the workplace and play an active part in their community.

Key achievements April 2022 – March 2023

50+ students

from Hong Kong benefitted from additional funding.

We have been able to access additional funding from Department for Levelling Up Communities to support foreign students from Hong Kong.

10% increase

in take-up in learning opportunities. Participation in learning opportunities continues to increase in the 2021/22 academic year, with 9,770 residents benefiting through AEB, compared to 9,061 in 2020/21

3.4% of all enrolments

were Level 3 courses in 2021/22.

Against a national decline. Level 3 courses have increased from only 0.9% in 2019/20 to 3.4% of all enrolments in 2021/22.

An Annual Report for the ESOL Planning Partnerships has been published and shared with the Skills Committee, with our work recognised as national best practice.

Increase in uptake

in adult education in target areas in Fenland

Over 1,500 residents

participated in English for Speakers of Other Languages. 18% improvement in completions.

Case study – Ukrainian refugees

307 Ukrainian refugees in Cambridgeshire and Peterborough have accessed English lessons to help them resettle, funded by the Combined Authority.

Cambridgeshire and Peterborough Combined Authority have been supporting Ukrainian refugees in the county by being the only Combined Authority in the country to fully fund English as a Second or Other Language (ESOL) provision. To date, 307 Ukrainian refugees have been supported through ESOL in the region.

ESOL is a language course that supports speakers of other languages to learn the basics of speaking, listening, reading, and writing in English. Studying ESOL can help individuals settle into life in the UK, looking for employment and improve communication with doctors, teachers, and other people that students may meet through their daily routine.

The Combined Authority have awarded c£1.2m to education providers to deliver ESOL in Cambridgeshire and Peterborough for the 2021/22 academic year.

Courses are offered to students in a variety of ways so that they can pick a learning method which suits them and their lifestyle best. This could be from full-time to part-time study, online to evening classes or even summer programmes.

In addition to this, ESOL providers have also supported learners with transportation, childcare, counselling, and mental health support. This provision can be essential to helping refugees resettle in the region.

Multiply Bus

The Cambridgeshire and Peterborough Combined Authority was awarded £4 million by Government to help improve numeracy across the region as part of the national Multiply programme.

Colleges and training providers across the region are providing ways people can sharpen up their maths to help everything from better household budgeting through to getting the skills needed to advance in a career.

A **Multiply Bus**, operated by one of the training providers, Runway Training, was stopping across the region in February and March 2023. People were invited to hop on board and find out how Multiply could help them build number confidence and improve their maths skills.

The bus is fully equipped with ten laptops, wi-fi, screens and a coffee machine, and has a relaxed, friendly feel. In addition to visiting major towns, this mobile learning venue aims to bring Multiply to the rural communities across the region.

Key achievements April 2022 – March 2023

September 2022

Combined Authority secures £4 million in Multiply funding from Government

March 2023

Multiply Bus tours town and city centres raising awareness of courses





Case study

The Multiply Bus Roadshow toured towns across Cambridgeshire and Peterborough aiming to showcase to the public free courses to help adults improve their maths skills.

Multiply offers skills for everything from household budgeting and helping children with homework, to qualifications to help advance people's careers. A special promotional bus toured the region to raise awareness with the public of the courses and their benefits.

With visits from members of the public, councillors and others, the Multiply Roadshow stopped in Peterborough, Ely, Wisbech and Huntingdon.

On the Multiply bus, operated by training provider Runway Training, people could find out more about some of the courses on offer, tackle maths Jenga or step up to take the National Numeracy Challenge to test their skills.

Those aged 19 and over and who

don't have maths GCSE at grade C (or equivalent), can access free numeracy courses through Multiply. As well as gaining number confidence, Multiply courses offer maths qualifications, so people can learn at a level and pace to suit them.

Multiply is a government initiative which is running in regions across the country. In Cambridgeshire and Peterborough Multiply courses are offered by a range of colleges and training providers.

57% of the working age adult population in England are estimated to have low numeracy skills. Three in 10 (31%) say they are not a "numbers person". Women are more likely to say it and are more than twice as anxious as men about maths and numbers.

ARU Peterborough

ARU Peterborough fulfils a decades-long ambition to build a university in the city. Based at the Embankment site, the campus opened its doors to its first students in September 2022.

The university is a partnership between the **Combined Authority, Peterborough City Council** and **Anglia Ruskin University**. The university aims to have a transformational impact through a purpose built, publicly accessible campus, driving up skills levels and aspirations in a city which is a higher education 'cold spot'. The university also aims to provide employers with the pipeline of talent they need to thrive. Courses are directly linked to skills needed in the local economy, with employers co-creating the curriculum.

The second phase, the Research and Innovation Centre, has been built and is being marketed to prospective tenants. It will host research and development activity and offer space for innovative businesses to grow. The ground and first floor of the building are under offer with options for the occupation of the third floor under review. It is anticipated that internal fit out work will be completed over the summer in 2023.

Key achievements April 2022 – March 2023

University Impact Initiative of the Year Winner

ARU Peterborough was a finalist in the category of University Impact Initiative of the Year award, by the Association of University Directors of Estates (AUDE), for its positive impact on the city and region. (In April 2023 it was announced as the winner.)

ARU opens

The university opens to its first students as planned in September 2022.

Planning permission

for a second teaching building and Living Lab public science facility is secured in December 2022.

Phase 2 Innovation and Research Centre

Construction completes in January 2023.

First international students

begin studying in January 2023.



Case study

ARU Peterborough and national charity IntoUniversity team up to open a new learning centre to empower thousands of young people to achieve their academic and career ambitions.

The centre is a collaboration between Anglia Ruskin University (ARU) and national education charity **IntoUniversity** to provide long-term educational support to young people facing disadvantage and who are typically underrepresented in higher education.

Working closely with local schools, businesses and universities, the centre offers long-term support to young people aged 7-18, helping them to discover their focus, build their capabilities and ultimately have the opportunity to reach their full potential.

Support offered at the centre includes after-school academic help, mentoring with local university students and professionals, in-school aspiration-raising workshops and enrichment and work experience opportunities. Once established, the centre will support over 1,000 students per year.

The centre, located in Norman Road close to several schools, is in an IMD (index of multiple deprivation) decile 2 area, making it among the bottom 20% of areas in the country in terms of relative deprivation. The local progression rate among young people to higher education is just 30%. This compares to a national average progression rate of

62% for the most advantaged students in England. In 2020/21, 47% of children were living in poverty in Peterborough, equating to over 13,200 young people.

IntoUniversity has a proven track record of improving attainment into further education for students facing disadvantage, and currently supports over 46,000 young people each year at their 39 centres nationwide.

Of the students who attend IntoUniversity centres, 66% go on to progress to university, compared with 26.6% of students from similar backgrounds nationally, meaning students are almost three times more likely to enter higher education through attending.

Around 30 of the students who are set to benefit from the centre during the next academic year and beyond, along with their parents and guardians, attended the launch event with some of them delivering speeches.

Students took part in a variety of activities during the event replicating the type of activities they will be engaging with in the year ahead during after-school academic support sessions.

Skills Bootcamps

The Combined Authority has been successful in attracting millions of pounds of skills investment in the region for the delivery of new Skills Bootcamps.

Skills Bootcamps are flexible courses of up to 16 weeks, giving people the opportunity to gain the skills demanded by employers in the Cambridgeshire and Peterborough region. They are designed to help improve people's careers and include a fast-track to an interview with an employer. These courses are fully funded and are free for learners.

Skills Bootcamps are being delivered in partnership with employers, further education training providers and local government. The courses are funded by the Government's Department for Education and developed locally by the Cambridgeshire and Peterborough Combined Authority.

Skills Bootcamps have been running in Cambridgeshire and Peterborough since September 2021 and have been delivering great results for both people and employers

Key achievements April 2022 – March 2023

First Skills Bootcamps

Delivery in the region covering digital skills

Grant funding

to deliver Wave Three Skills Bootcamps during 2022-23. The existing Wave Three funding concludes for new starts in March 2023.

Successful bid

for a fourth wave of Skills Bootcamps, worth £2.8 million, approved in March 2023



Case study

The Combined Authority secured £2.8 million in new Government funding for Cambridgeshire and Peterborough to deliver short, intensive courses to help advance people's careers and boost their income.

The flexible courses of up to 16 weeks, teach a variety of in-demand skills which also guarantee an interview with a local employer.

The courses are free to members of the public, while local employers can also upskill their existing staff through the Skills Bootcamps with large fee reductions of up to 90% of the cost per employee.

The Combined Authority is already delivering Skills Bootcamps through a

range of colleges and training providers throughout the region. This newest funding aims to provide courses in Digital, Construction, Green Skills, Technical, Logistics and Pathways to Apprenticeships sectors.

The Combined Authority is also able to consider funding Skills Bootcamps courses which fall outside of those sectors, where there is local employer skills demand and job opportunities.

North Cambridgeshire Training Centre

The North Cambridgeshire Training Centre is an apprenticeship training school in Chatteris, funded through the Local Growth Fund. Built on land next to advanced manufacturers Stainless Metalcraft, which has a rich history of providing apprenticeships, the training centre opened in autumn. It aims to provide Level 2 to Level 5 Apprenticeships to 80–130 students a year.

It is managed and operated by West Suffolk College, part of the Eastern Colleges Group, and was built with the help of a £3.16m grant from the Combined Authority Business Board's Local Growth Fund. A further £350,000 has also been provided by the Combined Authority to upgrade the A141 roundabout, including improving access to the centre.

Specialising in engineering and advanced manufacturing, there is a focus on future skills training including robotics, automation, and composite materials manufacturing. In addition to this scope, the training centre has a range of commercial training and professional development courses available.

Key achievements April 2022 – March 2023

Summer 2022

Training centre construction completed

Autumn 2022

Training centre opened





Case study

Jonathan Garwell, 19 from Walsoken near Wisbech changed from A levels to an apprenticeship run by North Cambridgeshire Training Centre, funded by the Combined Authority.



"I currently study on a level three Plate Welding Apprenticeship with Stainless Metalcraft in Chatteris.

As part of my course, I gain support from the North Cambridgeshire Training Centre (NCTC), a brand new, state-of-the-art building based in Chatteris that specialises in offering Engineering, Advanced Manufacturing, Management and Business Support Apprenticeships. All the qualifications are supported by West Suffolk College.

Stainless Metalcraft has been training apprentices for over 100 years and in 2010 opened their own apprentice training school on site. I spend two days per week there and the remaining days at the NCTC. It's a partnership between Stainless Metalcraft and the college and its only 100 metres up the road so it's perfect for me.

I decided to change from A levels because I am more of a practical hands-on person and therefore an apprenticeship suits me better.

So far, I've been learning lots of key skills relating to engineering, welding and working with machines. I get to learn on the job whilst getting paid.

During lockdown, I set up my own small business. Like everyone else, there wasn't much to do so I went out into the garden shed and started honing my woodworking and metalwork skills. I then started making things that I could sell on eBay. I made door wedges, wooden spoons, kitchen utensils and decorative chopping boards. Outside of work I like music and boxing and I'm hoping to create a career that packs a punch."





Place & Connectivity

Affordable Housing

On March 31, 2022, the Cambridgeshire & Peterborough Combined Authority concluded its Affordable Housing Programme, achieving the delivery of 1457 new homes in communities across the region. The programme, which began in March 2017, was established under the devolution deal with the aim to deliver good quality homes alongside well-connected communities close to jobs and public transport.

Key achievements April 2022 – March 2023

94 New homes at Alconbury Weald

At Alconbury Weald, the site contains a total of 94 homes, and 44 units have been completed to date. Of these 44, 35 are rented and 9 are shared ownership. In total, 94 homes made up of 63 houses and 31 apartments will be on the site, 29 of which will be allocated as shared ownership, with the remaining homes offered at a discounted rent for essential workers.

6 one bed affordable rented units in Wisbeach

At the Housing & Communities Committee meeting on 7 October 2022, a recommendation that funds of £210,000 be used to provide 6 one bed affordable rented units at 24 High Street, Wisbech was unanimously approved.

16 new affordable homes in Wicken

In June 2022, Hawes Lane in Wicken celebrated the completion of 16 local affordable new homes.



Case study

On 4 November 2022, 22 affordable new homes for first time buyers were completed in Alconbury Weald, Huntingdonshire, made available thanks to Rentplus-UK's innovative affordable rent to buy scheme.

The homes are part of the celebrated Urban and Civic site which received funding from the Cambridge and Peterborough Combined Authority, and they include 8 x 1 bed flats, 11 x 2 bed flats and 3 coach houses. All homes have been allocated and tenants have moved in.

With the average house price for first-time buyers in Huntingdonshire coming in at over £261,000, many working families on lower incomes are locked out of home ownership. The majority can't save a deposit, even though they could afford the monthly mortgage repayments. Under Rentplus' model, 22 families, the majority of whom are key/essential workers and nearly half

drawn from the emergency services or armed forces, have been able to move into a brand-new home without the need for an upfront deposit. Each family has previously lived in or have connections to the area.

Under the model, private finance funds new affordable housing. Those moving in pay no upfront deposit; they rent their home paying an affordable rent for between 5 and 20 years whilst they save and build a strong credit rating. When ready to buy, Rentplus gifts them 10% to put towards their savings for the deposit.

Community-led Housing

Community led housing (CLH) is a way for communities to address their local housing need. The homes are owned by the community, they are legally protected in perpetuity, and any future surpluses are reinvested back into the local area. CLH groups are set up and run by local Trustees. Open and meaningful community engagement takes place throughout the development process and schemes provide genuinely affordable homes secured for local people.

Key achievements April 2022 – March 2023

£6.5 million loan for affordable housing in Haddenham

In January 2023, the Combined Authority received repayment of a £6.5m loan made to East Cambs Trading Company (ECTC), which was given to support a community-led development that delivered affordable housing for rent and sale in West End Gardens in Haddenham. This was received ahead of the redemption date of 31 March 2023. The development has delivered 54 units, 19 of which are affordable homes that have been transferred to Haddenham Community Land Trust (HCLT).

21 Units in Great Shelford at 50% of market rent

In January 2023, a Community-Led Housing initiative at More's Meadow in Great Shelford was completed, providing affordable rent homes in the local community for local people. The site includes 21 units at rents that are 50% of market rent, which is even lower than normal affordable rents.

15 new homes in Girton for over 55s

Community-Led Housing initiative at Dovehouse Court in Girton was formally completed, providing 15 new homes in the form of Almshouses for over 55s who are living in or have a close connection to Girton.



Case study

A Community-Led Housing initiative at More's Meadow in Great Shelford was completed on the 30th January, providing affordable rent homes in the local community for local people.

The site includes 21 units at rents that are 50% of market rent, which is even lower than normal affordable rents. The scheme received grant support from the Combined Authority's affordable housing programme in November 2020, and is a very welcome completion of one of the earlier approved Community Land Trust (CLT) schemes.

The homes are a mixture of one, two and three bedroom homes with gardens, and brings to 53 the total number of almshouses owned and managed by the Parochial Charities, which is a member of The Almshouse Association. Designed for sustainability, the new homes achieve high standards of energy efficiency, keeping residents'

running costs low. Air source heat pumps and mechanically ventilated heat recovery systems minimise energy losses whilst providing good ventilation. The homes are triple glazed throughout.

Planning approval also includes the provision of new allotments, orchards, parkland, a community garden, the planting of native trees and hedgerows, and enhanced public access to the surrounding green belt.



Market Towns Funding Programme

In 2018, the Combined Authority started the Market Towns Programme by funding Masterplans for Cambridgeshire's eleven key market towns. The plan gave each community the chance to shape its own future with district councils then proposing projects to the Programme for capital funds.

Wisbech, March, Whittlesey and Chatteris, St Ives, Ramsey, Huntingdon, Ely, Soham, Littleport and the trailblazing pilot town, St Neots, each had its own plan.

Through ten funding calls under the Programme, a total of £14.2m has been awarded by the Combined Authority. This included funding contributions towards the areas two Future High Street Schemes in St Neots (£3.1m) and March (£2m).

District councils needed to demonstrate that their proposed projects would help to bring to life each town's Masterplan but, since the Covid-19 lockdowns, they have also had to show how they will drive good growth and regeneration to benefit and advance the community in a post-pandemic economy.

More people live in Cambridgeshire's market towns than in its cities and many of the projects are about improving public space for commerce, recreation, and health. Not only has the investment helped refurbish shop fronts and installed benches, planters and better lighting and signage across several of the town centres – but it also funds creative initiatives, like a splash park in Wisbech, a heritage walk in Whittlesey, and a new home for Chatteris Museum in a former bank building, all contributing to Covid-recovery and the work of making the town centres vibrant and attractive.

Key achievements April 2022 – March 2023

£802,150 for Cycle link Scheme in St Ives

£802,150 awarded to Huntingdonshire to improve Cycle Link Scheme in St Ives, St Ives Community Bandstand to provide a new venue for cultural events and activities, Shop Front Grant Scheme to provide direct grants (of between £5K and £10) towards improving shop frontages, Cromwell Museum Expansion and a new Huntingdon BID Visitor Information facility housed within the Commemoration Hall.

£925k funding for Littleport business hub

to boost workspace for new jobs. Littleport's Capital Investment Fund also received £75k for a 'grant pot' to improve energy efficiency and spruce up frontages in Littleport's town centre.

£14.2 million for 52 projects

covering the eleven market towns of Cambridgeshire & Peterborough.

An additional £250k was awarded to the Chatteris Museum & Community Space project.

'live' projects

Funding for 'live' projects where construction costs have increased significantly due to Covid-19.

May 22:

The Jubilee Gardens in Chatteris refurbished as part of the Renaissance Project – and improving public space within the town.

Case study

HRH The Duke of Edinburgh visited Soham to officially open the Viva Theatre, a vibrant cultural centre resurrected from the once-derelict Spencer Mill.

The Combined Authority awarded £325k in funding to expand the facilities and attract more weekend and evening visitors into Soham.

Funded by the Combined Authority, the resurgent Mill now offers business, training, and re-training facilities as well as the theatre in an attractive community hub. It demonstrates the powerful impact the Market Towns Programme has made in strengthening local communities across

Cambridgeshire & Peterborough.

HRH The Duke of Edinburgh officially opened the Viva Theatre in April 2023 and saw how Combined Authority funding will help it evolve ever more usefully as a cultural, social, and economic asset for the town. Completed in early 2022, the Viva Theatre is now permanent home to Viva Arts and its activities and is already thriving as a centre for drama and a landmark for the town.

Peterborough Station Quarter

As the area's Strategic Transport Authority, the Combined Authority, collaborating closely with Peterborough City Council, was successful in its bid to the Department for Levelling up, Housing and Communities for funding to help develop the wider Peterborough Station Quarter into a welcoming gateway to the city with its cathedral, shopping, and new university.



The Station Quarter is the entire area around the railway station. This key project will create a new western entrance to the station with a bike and car park – to make a double-sided building – with a wider footbridge over the rail tracks. It will ease pressure on roads into the centre, making it safer and more enjoyable to cycle around the city. Green areas with biodiversity, community spaces and joined up routes into central Peterborough will boost active travel and reduce carbon emissions.

Improving passenger journeys will encourage more rail travel, stimulating local and regional economies. It will help Peterborough attract knowledge-intensive and high-level employers, and free up land for commercial and residential developments.

The Combined Authority Board agreed to accept a provisional award of £47,850,000 to be spent between 2023 – 2026 with the funds being released to project lead Peterborough City Council in £5m blocks.

Key achievements April 2022 – March 2023

August 2022

Combined Authority collaborated with Peterborough City Council on the bid for the Peterborough Station Enhancements and Connectivity Project, submitted on 1st August 2022

Jan 2023

The Department for Levelling Up, Housing and Communities confirmed that the bid was successful, subject to future business case approval.

March 2023

The Combined Authority Board approved accepting the £47.8 million Government offer.

Digital connectivity

With funding from the Combined Authority, Connecting Cambridgeshire is driving improvements to digital connectivity infrastructure for fibre broadband, mobile and public access Wifi coverage to support economic growth and make it easier for people to access public services.

The Digital Connectivity Strategy 2021-25 underpins the Combined Authority's sustainable growth ambitions, helping to ensure digital connectivity across the whole area, accessible to all, supports public services, thriving communities and the good, green business growth that can endure.

Upgrading digital infrastructure will be transformative for people living and working in rural areas. Bringing reliable and ultrafast broadband to their homes will boost our economy, broaden education, training and job opportunities, and allow communities to thrive.

Access to all types of opportunity has become highly dependent on digital connectivity. Families and individuals without access are excluded from many benefits of economic growth, health inequalities are exacerbated, and children's life chances are damaged.

The Connecting Cambridgeshire programme, delivered by Cambridgeshire County Council, has already ensured that much of the county can access superfast broadband and free public access wifi in towns and cities.



Key achievements April 2022 – March 2023

May 2022

Building on Connecting Cambridgeshire's work with OpenReach, over 100,000 more homes and businesses in line for broadband boost thanks to a £30m investment by Openreach. Most places in Cambridge, Peterborough and the following 15 locations can potentially upgrade to full fibre broadband.

Cambridge	March
Cherry Hinton	Mereside (Ramsey)
Cottenham	Peterborough
Doddington	Teversham
Eye	Waterbeach
Fulbourn	Werrington
Girton	Whittlesey
Histon	Willingham

November 2022

Free public access CambWifi goes live in Peterborough city centre to support businesses, keep residents connected and allow shoppers and visitors to make the most of cafe culture. With funding from the Combined Authority, the secure public access network was installed through the Connecting Cambridgeshire programme to support Peterborough Positive and the city's new business improvement district.

March 2023

Department for Science, Innovation and Technology announces some 45,000 rural homes and businesses in our area can look forward to gigabit-capable full-fibre broadband connections thanks to the £69 million contract for Cambridgeshire under the £5b Project Gigabit scheme.

January 2023

Community resilience pilot started to detect river level rises in vulnerable flood spots across Huntingdonshire. Jointly-funded by the Combined Authority and Huntingdonshire District Council in collaboration with Connecting Cambridgeshire – the trial deploys low-cost sensors to notify council officers and community flood groups about rising water levels.



Case study

Aseptika Limited, a healthcare company based in St Ives, has put a Digital Technology Grant, funded by the Combined Authority, to good use by starting to automate their work – which has led to them being able to take on an apprentice.

Aseptika is developing an integrated suite of self-monitoring devices and services that lets patients better self-manage long term health conditions through self-monitoring – under the brand name **Activ8rlives**.

A Digital Technology Grant enabled the company to complete the automation of their eCommerce route to market for home-use medical devices, which played a vitally important role in supporting the NHS during the COVID-19 pandemic.

"The support we received via the funding was incredible and invaluable. We were able to contract a local consultancy to redevelop our website and build it on an eCommerce platform to fully automate our sales process."

With the benefit of this new automated system Aseptika have been successful in securing a further £50,000 grant to fund the first year's costs for a dedicated Digital Marketing Executive to drive forward their B2C sales channel. Kevin admits that none of this would have been possible without the initial support from the Digital Technology Grant to build the

eCommerce infrastructure and the implementation of sales and shipping automation.

We never expected this to be an immediate outcome from this project. Having the initial grant money allowed us to think 'What would happen if we automated this?' And this has indirectly led to us also being in a position to hire a local young person as an apprentice to further drive automation for the company."

Kevin Auton Ph.D, Aseptika
Managing Director





Climate

Fenland SOIL

As part of the work carried out by the Cambridgeshire and Peterborough Combined Authority's Independent Commission on Climate, the Combined Authority provided funding of £50,000 a year for two years to create Fenland Soil, a dedicated team with farmers at its core to tackle climate issues relating to agriculture and peat in the Fens.

Fenland Soil is a not-for-profit members organisation that aims to inform and develop 'whole farm' land use policies, aimed at achieving climate change mitigation and biodiversity enhancement in the Fens, and to help establish an agreed set of numbers for GHG emissions for deep, shallow and wasted peat soils.

Across the workstreams Fenland SOIL brings together farmers and growers from across the Fens, academics, conservationists and other key local stakeholders to address our common problem in a holistic way.

Key achievements April 2022 – March 2023

Lowland Agricultural Peat Taskforce

Working with the government on a national level to inform the Lowland Agricultural Peat Taskforce (LAPT).

Flux towers

have now been installed at Burgess Farms, Yaxley and Allpress Farms to monitor GHG emissions.

Fenland SOIL

has commissioned Andersons Eastern to produce a farm scale economic analysis of potential future mitigation.

The first Farmers' dialogue event

Sponsored by Anglian Water, was hosted by F C Palmer and Sons at their farm in Stretham. Sixty-five farmers and industry stakeholders from across the Fens came together for a tour, led by Luke Palmer, of their operations efforts with regards to reducing GHG emissions from their peaty soil.

Water for the Future Event hosted

Anglian Water co-sponsored this event around the future of water for agricultural use in the Fens, looking at both the challenges and potential opportunities. Around fifty farmers attended.

Local Nature Partnership



The Combined Authority provided £1m funding to Natural Cambridgeshire to build local capacity to green investment.

Natural Cambridgeshire, as the Local Nature Partnership for Cambridgeshire and Peterborough, recognised this issue and developed the Doubling Nature ambition. The aim of the programme is to attract additional investment into nature-based projects, building local capacity in green investment, and deliver projects on the ground across the CPCA area.

The Combined Authority has endorsed Natural Cambridgeshire's Vision for Doubling Nature, and this was reinforced by the recommendations of the Cambridgeshire & Peterborough Independent Commission on Climate, which identified nature as making an important contribution to climate change mitigation and adaptation

The £1m fund will test the proposition that there is an appetite for private/ third sector investment in nature and nature-based solutions to tackle other problems. Through pilot projects the Fund will test the barriers and opportunities to this approach.

The nature projects will provide benefits through their enhancements in nature, in line with the ambition to double the amount of Cambridgeshire's rich wildlife habitats and natural green space from 8% to 16%. Depending on the project there could also be job increases attributed to the intervention.

Key achievements April 2022 – March 2023

Scheme launch

The scheme was successfully and was oversubscribed.

Working with project applicants

Expressions of interest have been received and the team are working with successful applicants on bids for projects to begin 2023/2024.

Waterbeach Renewable Energy Network (WREN)



The Combined Authority provided £2.7m of funding for the delivery of the Waterbeach Renewable Energy Network (WREN) project.

The funding will facilitate the development of an integrated renewable energy and storage solution to serve the electric Refuse Collection Vehicles within the overall fleet at Greater Cambridge Shared Waste Service Depot at Waterbeach.

With funding for the WREN project, South Cambridgeshire District Council and Cambridge City Council will be able to meet the Independent Climate Commission's key recommendations for the waste sector to "roll out zero carbon collection vehicles" and meet their own net zero goals. The WREN local grid option will achieve significant carbon reduction for the region.

Key achievements April 2022 – March 2023

Two thirds of the waste fleet replaced with electric refuse collection vehicles.

Planning permission for the depot granted.

Early preliminary explorations of the ground have taken place.

Net Zero Hub

The Greater South East Net Zero Hub is part of the Cambridgeshire and Peterborough Combined Authority. They work with public sector organisations, community enterprises and a wide range of stakeholders to develop and support the delivery of projects to accelerate the transition to Net Zero.



Key achievements April 2022 – March 2023

£82million Home grant

Secured £82million to deliver the Home Upgrade Grant Phase 2 across 48 local authorities in the Greater South East.

£4m energy advice fund

Launched a £4million fund for Local Energy Advice Demonstrator projects, to support households with one-to-one advice on energy efficiency home improvements.

£1.3m Rural Community Energy Fund

feasibility and development projects delivered by community organisations.

Decarbonisation Scheme

Supported £35M of successful Public Sector Decarbonisation Scheme projects, £25M of which involved undertaking direct studies for stakeholders.

Awarded funding to deliver additional capacity support including:

- £100K for Hastings Partnerships for Places and People
- Net Zero delivery vehicle Business Case development (£70k)
- Health and other public estate as anchors for Net Zero (£50k) Mapping and decision-making toolkits (£25k)
- Park & Ride Zero Carbon Hubs – feasibility and business case development (£25k).
- Greater South East Retrofit Training Network (£150K)



Cambridge Welcomes 2
New Electric Buses

 Stagecoach

86001

86001

ric. 0% Em issi

CAPABLE OF
SUSTAINABLE
PERFORMANCE

UK BV23 NPZ



Transport

100% EL

Cambridge Welcomes 30
New Electric Buses

A proud partnership between



Bus improvement plan

The Combined Authority has developed and gained approval for a Bus Strategy with the aim to transform bus travel and more than double bus patronage by 2030.

The strategy sets out an ambitious vision to improve our bus network in a way that will benefit the residents and businesses of our region. Offering high levels of convenience and connectivity – not just in our urban areas, but across the entire region, including rural areas and market towns; something not seen on such a scale anywhere else in the UK. We want to deliver a fully integrated bus network, serving the needs of the Cambridgeshire and Peterborough area. We want to make journeys quicker, cheaper, and more reliable, delivering attractive, environmentally friendly services across our area

The purpose of the Bus Strategy is to outline the key strategic aims, objectives, and aspirations of the Combined Authority to enable us to bid for further funding and shape the network to meet the needs of the people of the region.

Next steps are to agree a Bus Service Improvement Plan, take forward the important work on Bus Reform and deliver projects which can meet the ambition of the Bus Strategy to double bus patronage by 2030.

Key achievements April 2022 – March 2023

6-week Bus Strategy consultation

Over 80% of respondents supported the vision, aims and principles set out in the strategy

Bus Strategy approved

The Combined Authority board approved the Bus Strategy in March 2023



Case study

A scheme to make bus fares available for no more than £2 has led to over a 7% rise in passengers

Data collected by Stagecoach-East (remove double space here) shows 1,354,000 £2 tickets have been sold since the scheme came into effect in January, an uplift of 7% in passengers travelling on buses.

Passengers across Cambridgeshire and Peterborough will continue to benefit from £2 bus fares, as the Department of Transport has extended funding for the initiative until (remove double space here) November 2024. The Cambridgeshire and Peterborough Combined Authority welcomed this move by government to provide funding to bus companies to reduce their fare rate in a bid to encourage more people to return to bus travel.



Active Travel

The Combined Authority has successfully competed for a wave of funding from central Government and has been highly rated by Active Travel England for its walking and wheeling plans.

Changing people's travel habits is key – two in three personal trips are within five miles, for many people a distance that could be cycled. For school children, the opportunities are even greater as nine in ten live within 15-minute walk of their primary school.

By encouraging active travel and supporting initiatives that help people change their habits, the wellbeing of communities in Cambridgeshire and Peterborough can be improved and the area's net zero carbon ambition made more achievable.

The excellence rating achieved by the Combined Authority is critical to its ambitions to increase active travel networks within its mixed rural, urban and city area. The ranking will guide how funding and other resources are allocated.

The award included funding for an 'active travel advocate', a role that would work with the proposed active travel centre-of-excellence at Cambridgeshire County Council to push forward active travel plans.

Key achievements April 2022 – March 2023

High rating from Active Travel England

in relation to the strategic direction and buy-in at a political level.

Successful bid for £823k

Capability and Ambition Fund.

TING

Ting is an 'Uber style' bus service that covers the West Huntingdonshire area including key towns such as St Neots, Cambourne, Sawtry, and surrounding villages, improving transport links for those living in rural areas, removing young people's dependence on parents for lifts and allowing residents to lessen their reliance on cars.

Key achievements April 2022 – March 2023

In December 2022, the Ting service was fully funded for a further 12 months using Bus Service Trials money separately approved in 2020/21.

From November 2022, Ting started earlier in the morning to help people get to work, with bookings from 0600 instead of 0700, and the service runs until 2000, six days a week.

King's Dyke

Part of a £32m scheme to improve roads around the A605, the new Ralph Butcher Causeway has provided a solution to the traffic jams at the King's Dyke Level Crossing, which people in the area have campaigned for fifty years to see.

It will make housing and job growth possible within Whittlesey, as well as reducing people's long and stressful journey times that increased carbon emissions and costs to business.

Opened to traffic in July, the King's Dyke improvement was chiefly funded by the Combined Authority

and is its biggest project to date. The new layout includes the bridge and causeway over the Ely-Peterborough railway line, and new roundabouts allowing traffic to move unimpeded in both directions.

Key achievements April 2022 – March 2023

July 22:

Mayor attends as Ralph Butcher Causeway opens to traffic – the new road has been named in honour of a former Fenland district councillor who campaigned from the 1970s for it to be built.

A1260 safety and improvement project

The A1260 is part of the Parkway Network, a strategic road system key to the development of Peterborough.

For several years, the Combined Authority has worked with partner Peterborough City Council to deliver two A1260 improvement schemes that will help Peterborough cut traffic jams and journey times, carbon emissions, boost active travel and realise its ambitions for business and housing growth.

Funded by the Combined Authority, the schemes are:

- **Junction 15** (A1260 Nene Parkway / A47 Soke Parkway/access to Nene Thorpe Bridge)
- **Junction 3** (A1260 Nene Parkway / A1139 Fletton Parkway/The Serpentine approaches)

Both projects are being staggered to minimise disruption to people using the routes.

Junction 15

The A1260 safety and improvement project offers better connectivity to public transport and green spaces for walkers and cyclists; this includes replacing a footbridge, creating zebra crossings, improving access to Ferry Meadows, and to the business park.

With bulb and tree planting, the scheme yields biodiversity gain, in line with Combined Authority determination to provide people with a transport network that works well for them but respects and enhances the natural and historic surroundings they value.

Key achievements April 2022 – March 2023

March 2023:

The new footbridge over the A1260 Nene Parkway at Longthorpe was opened to the public, just one part of the £8.1million project around Junction 15 funded by the Combined Authority. The new bridge is wider and less steep than its predecessor making it easier for pedestrians, cyclists, and wheelers to use.

March 2023:

Carriageway resurfacing following widening works along the Nene Parkway and Bretton Way.

Junction 3

For the **Junction 3 scheme**, the Combined Authority Board released money early to help Peterborough City Council meet the deadline required by the Transforming Cities Fund for starting the work.

The schemes picked for acceleration:

- **Malborne Way Footpath** – completing the missing link along an existing route.
- **Shrewsbury Avenue Cycleway**, a new bike path and resurfacing of an existing route.
- **The general highways work at Junction 3 of the Nene Parkway**, due to start in summer 2023, aims to cut rush hour traffic jams and improve the junction's efficiency and surrounding road network. The £9.3m project will create a third southbound lane on Nene Parkway from J31 to J3 and a third lane on the A1260 The Serpentine northbound approach, plus safety and active travel measures.

By improving the city's active travel infrastructure, the Combined Authority wants to help more people swap their cars for walking or cycling, with a major green dividend in cutting carbon, improving public wellbeing, and bringing cleaner air.

Key achievements April 2022 – March 2023

October 2022:

The Board approves early release of £518,988 to accelerate construction of active travel projects ahead of main highway works. These will be a new footpath on Malborne Way between Saltmarsh and the Phoenix School and an upgrade to the cycleway between Shrewsbury Avenue and the gated access of the Nature Reserve. pedestrians, cyclists, and wheelers to use.

January 2023:

The Board approved awarding £9,291,880 to Peterborough City Council for construction of the improvement scheme.

December 2022:

December 2022: Junction 32–33 full business case was submitted on time and budget.

March 2023:

The Combined Authority Board voted to put an underspend of £3,441,880 from Peterborough's Fengate Access Study budget towards building the city's A1260 Junction 32–33 project.

E-scooters and E-bikes

The Combined Authority, with its partners and operator Voi, launched in October 2020 the e-scooter trial in Cambridge. With e-bikes having been in circulation since February 2021, the aim was to provide a reliable and healthy travel alternative while cutting CO² emissions. The current trial has been extended to 31 May 2024.

E-bikes and e-Scooters offer a convenient and green way of travelling around the centre of Cambridge. E-bikes and e-Scooters have helped reduce the number of short car and taxi journeys across the city.

To make e-Scooters and e-Bikes travel more accessible, Voi offers a range of discounts for NHS emergency service workers, military personnel and veterans through its 'Voi 4 Heroes' scheme. Voi also offers

those on low incomes, disabled people and older people 65+ a 50% discount and there is a 20% discount on a Voi Pass for students and staff at higher education institutions.

E-Scooters and e-Bikes provide a 24/7 mode of transport which is helpful for people who work night shifts and early mornings. During the pandemic, Voi offered NHS and other emergency service workers free rides to help them get to work.

Key achievements April 2022 – March 2023

382,000 short car journeys

estimated to have been replaced by E-scooters and e-bikes in the region from June 2020 to March 2023.

Reduction of 186 tonnes of CO² Emissions

helped by E-scooters and e-bikes

Nearly two million (1,962,334) rides

have been taken since launch, with over 4.5 million kilometres travelled.



Case study

Voi Scooters help Cambridge residents to get around the city in a convenient way. Voi asked people around Cambridge what they liked best about e-Scooters some answers were:

"It's not that deep, it's a scooter – but I love it!"

"Cars take up so much space, you don't need them for menial tasks like going to Tesco's, you can get a scooter and it's so much better for the environment and a better experience."

"We want to breathe some fresh and clean air, absolutely – so this helps – why not?"

"It's convenient for getting between meetings and different parts of the City."

"Wherever it's parked, I can find one and I can get from A to B quicker."

"Riding the electric scooters is really important for us, to try and live that life we want to leave for others."

ZEBRA buses

In collaboration with the Department of Transport, Greater Cambridge Partnership (GCP) and Stagecoach, the Combined Authority has allocated nearly £3 million to fund 30 zero emission electric double decker buses. Due to join the city's ever-expanding fleet of cleaner vehicles in 2023 as part of the Zero Emission Buses Regional Area (ZEBRA) scheme.



Serious air quality issues cause up to 100 early deaths each year, the ZEBRA buses will make a significant contribution to improving air quality in the city, making buses a greener and more attractive travel choice in Cambridge.

By replacing 30 of our buses with the ZEBRAs, we can expect to see a reduction of emissions in that central zone of over 40%, contributing significantly to improved air quality and public health.

They will be used on the five Cambridge park-&-ride routes, as well as the

Citi 2 service which links Cambridge North Station with the city centre and Addenbrooke's Hospital.

The introduction of these buses is part of a commitment to a rolling bus replacement programme, replacing 30 vehicles a year across the Combined Authority area. There is an ambition to convert the entire bus fleet from diesel buses to zero emission vehicles within the Combined Authority region by 2030 to hit carbon emission targets and help tackle climate change.

Key achievements April 2022 – March 2023

£2,994,000 of funds allocated to the ZEBRA buses

Approved at the Combined Authority Board meeting on 25 January 2023

Cambridge South Station

The granting of the Transport & Works Order, giving the green light for a new railway station serving the south of Cambridge, crowns years of work by the Combined Authority and its partners collaborating to fund the early stages of development.

That early work by the Combined Authority and organisations like the Greater Cambridge Partnership, AstraZeneca Ltd and the Department for Transport itself was successful and Network Rail is now going ahead to realise the benefits of improving rail connectivity to the southern fringe of Cambridge and the all-important Biomedical Campus.

Plans involve creating a new two-storey, four-platform station, 'Cambridge South', adjacent to the Cambridge Biomedical Campus.

Network Rail held two rounds of Public Consultation in 2020, then submitted the TWAO application in 2021. Following a Public Inquiry in 2022, the TWAO was approved in December 2022 and Network Rail says construction of the new station could begin in the coming months.

The new station, 'Cambridge South', would connect the Cambridge Biomedical Campus with potential destinations such as central London, Stansted Airport, Ely, Birmingham and Europe.

Cambridge South would also give access to a growing area of high-quality employment and help relieve congestion in the local area by supporting the development of environmentally sustainable transport in Cambridge.

The construction works commenced on site in January 2023 and the planned opening date remains 2025.

In the future, East West Rail services from Bedford to Cambridge could serve the new station.



Key achievements April 2022 – March 2023

September 2022:

In September 2022, Cambridge South was named as one of 138 major infrastructure projects that the Government aims to fast-track, although that inclusion does not guarantee funding, planning consent, or approval.

December 2022:

The TWAO was granted by the Secretary of State in December 2022, meaning construction can proceed on the track realignments and station building.

March Area Transport Study and Market Towns Programme

This year inter-related plans to transform March Town Centre have moved ahead, thanks to millions in funding from the Combined Authority.

Hard on the heels of the Walking and Cycling, and Quick Wins schemes, the £440k Market Place regeneration began in January 2023 and completed in March. And in January, the Combined Authority Board approved £4.2m to get construction of the new Broad Street layout under way as well.

The infrastructure and public space of Broad Street is being reconfigured to create a greener, more open and pedestrian-friendly environment with smoother traffic flow through the town centre.

The project is being delivered with £4.2m from the Combined Authority's March Area Transport Strategy (MATS), £3.6m from the Future High Streets Fund and another £2 million from the

Combined Authority, through its Market Towns Programme.

The MATS Broad Street Scheme cuts road space for motor vehicles and puts in an extra crossing on Broad Street to improve pedestrian accessibility. It aims to help people leave the car behind, cycling or walking around March's historic town centre, making life more sociable and improving wellbeing and overall quality of life.

The Combined Authority's funding is helping to realise Fenland District Council's vision in Local Plan, published in 2014 – 'to maximise the potential of the area and deliver jobs, skills, improved housing and new infrastructure', and make the district 'a better place to live, work and visit.'

Key achievements April 2022 – March 2023

March 2023:

Market Place regeneration work completed.

January 2023:

Combined Authority Board notes completed MATS Full Business Case 1 for the Broad Street development, approves £4.2 million MATS funding to start Broad Street construction, and approves drawdown of £300k to complete Full Business Case 2 for St Peter's Road, Peas Hill, and Twenty Foot Road.





**CAMBRIDGESHIRE
& PETERBOROUGH**
COMBINED AUTHORITY

T: 01480 277180

W: cambridgeshirepeterborough-ca.gov.uk

2nd floor, Pathfinder House, St Mary's Street,
Huntingdon, Cambs, PE29 3TN