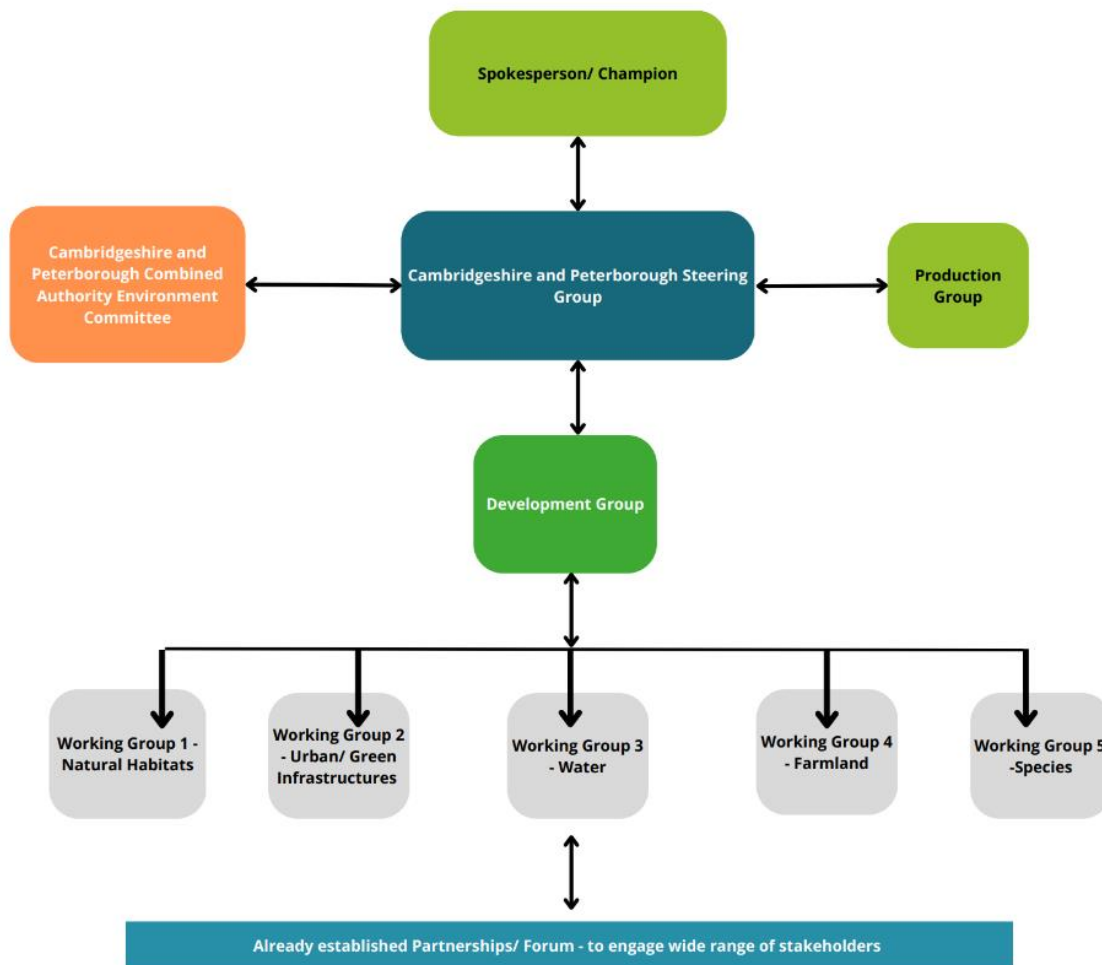


Appendix C: Governance structure

The diagram below sets out the governance structure proposed to develop the LNRS.



Notes on groups

The Environment and Sustainable Communities Committee governs the LNRS process, providing political oversight and recommending approval at key stages of LNRS.

The 'champion' is the Senior Responsible Officer within the CPCA (accountable for budget and programme direction).

The Steering Group will comprise officers of the Combined Authority, County Council, Peterborough City Council, Natural Cambridgeshire and Natural England. Meet monthly to check progress, receive reports / drafts, agree spend. Establishes and tasks the Working Groups.

The Development Group will include officers from all Supporting Authorities, relevant stakeholders, and Steering group organisations. Receive outputs from Working Groups and will be used for cross theme consideration. This group will meet on a 6 monthly basis and at critical points in the project (Pre- Consultation and Pre-Publication). In the interim a newsletter will be used to provide updates.

The Production Group is the core editing/writing team. Information fed by Working Groups, bring together all relevant information and writing of strategy. Responsible for technical aspects of (a) mapping (b) stakeholder engagement (c) wider environmental benefits (d) policy.

Working Groups – Thematic expertise, including officers from Supporting Authorities. Will consider the priority habitat themes, geography of Cambridgeshire's landscape and wider environment benefits.

Partnership / Forums – assist the Working Groups with their collective knowledge.